

Prince George's County

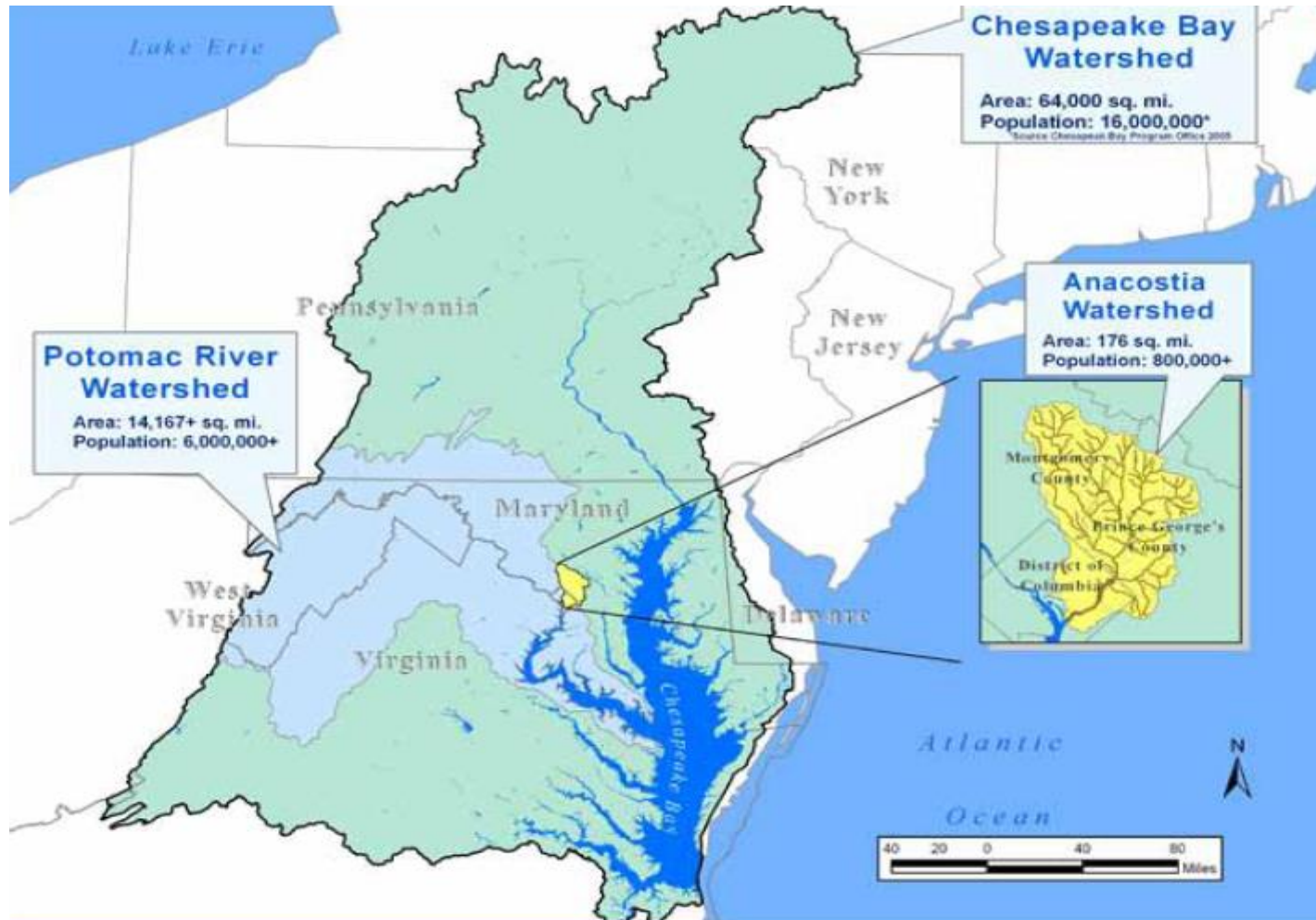
Clean Water Program

*Environmental Restoration
& Economic Opportunity*



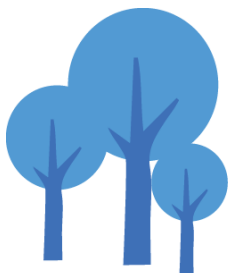
CHESEAPEAKE BAY WATERSHED

“YOU ARE HERE”



PRINCE GEORGE'S COUNTY, MD

- Population: 900,000
- 500 square miles
- Urban, Suburban, Rural
- Three major rivers
- Birthplace of Low Impact Development (LID)





WHAT IS POLLUTED RUNOFF?

















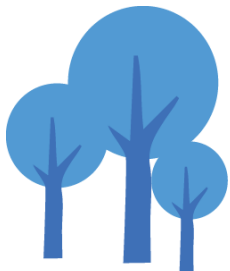


**Polluted Runoff
Pipeline**



IMPACTS

TRASH, NITROGEN & PHOSPHORUS



STORMWATER MANAGEMENT DIVISION

IMPACTS

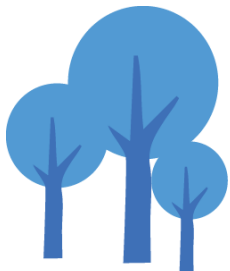
TRASH, NITROGEN & PHOSPHORUS



STORMWATER MANAGEMENT DIVISION

IMPACTS

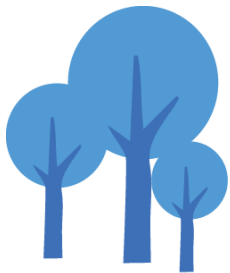
EROSION & SEDIMENTATION



STORMWATER MANAGEMENT DIVISION

IMPACTS

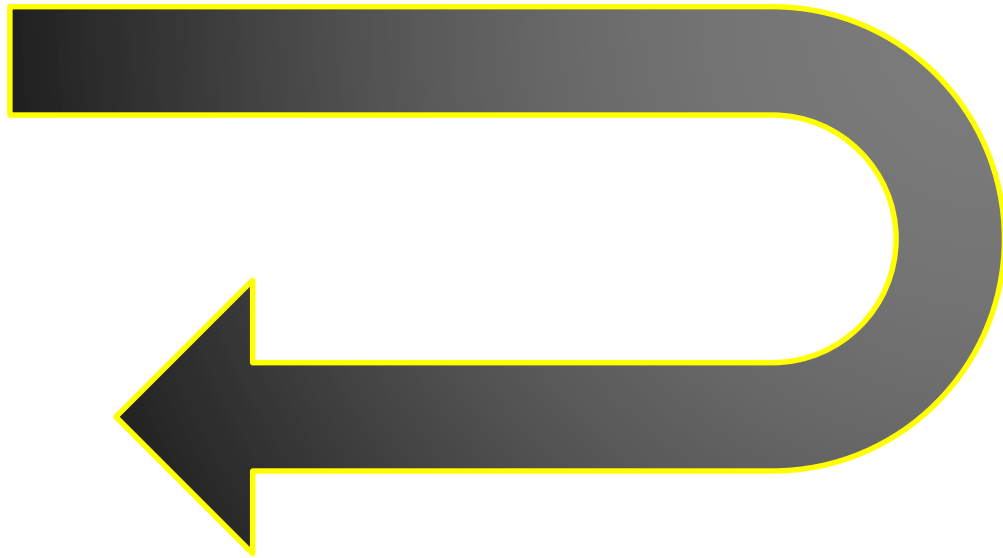
FISH KILLS, HEALTH ADVISORIES



STORMWATER MANAGEMENT DIVISION

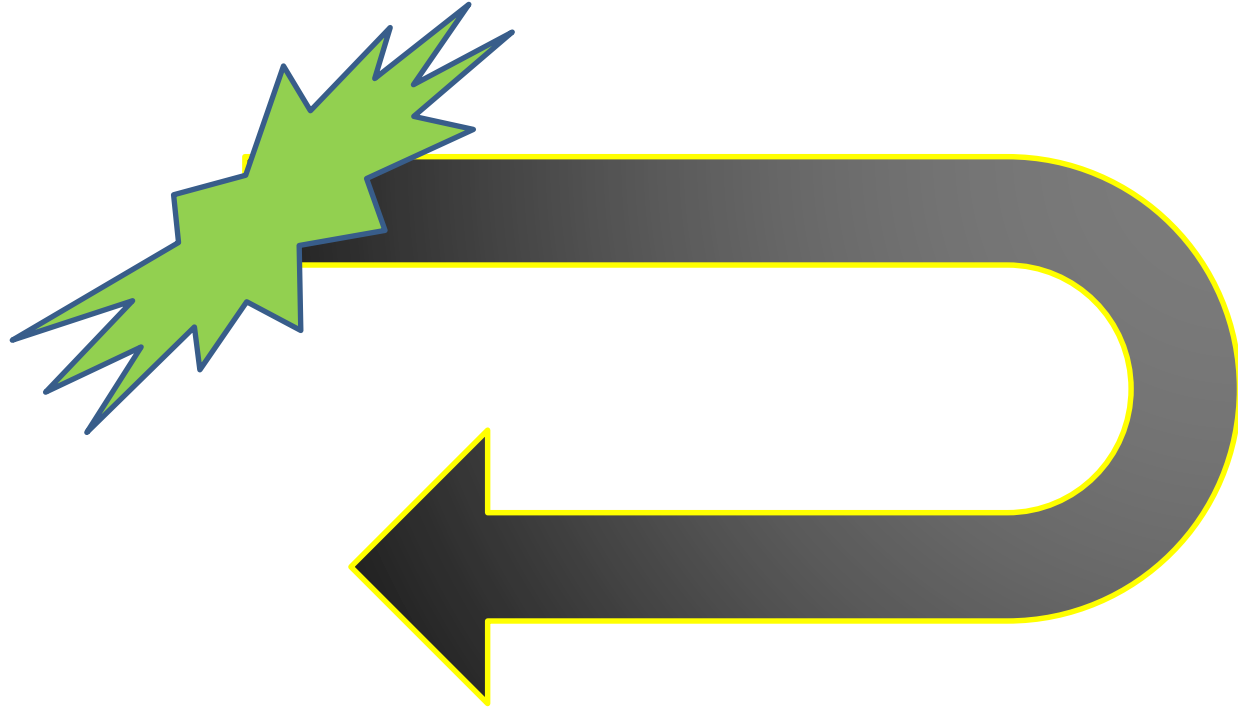


NEW CLEAN WATER ACT MANDATES



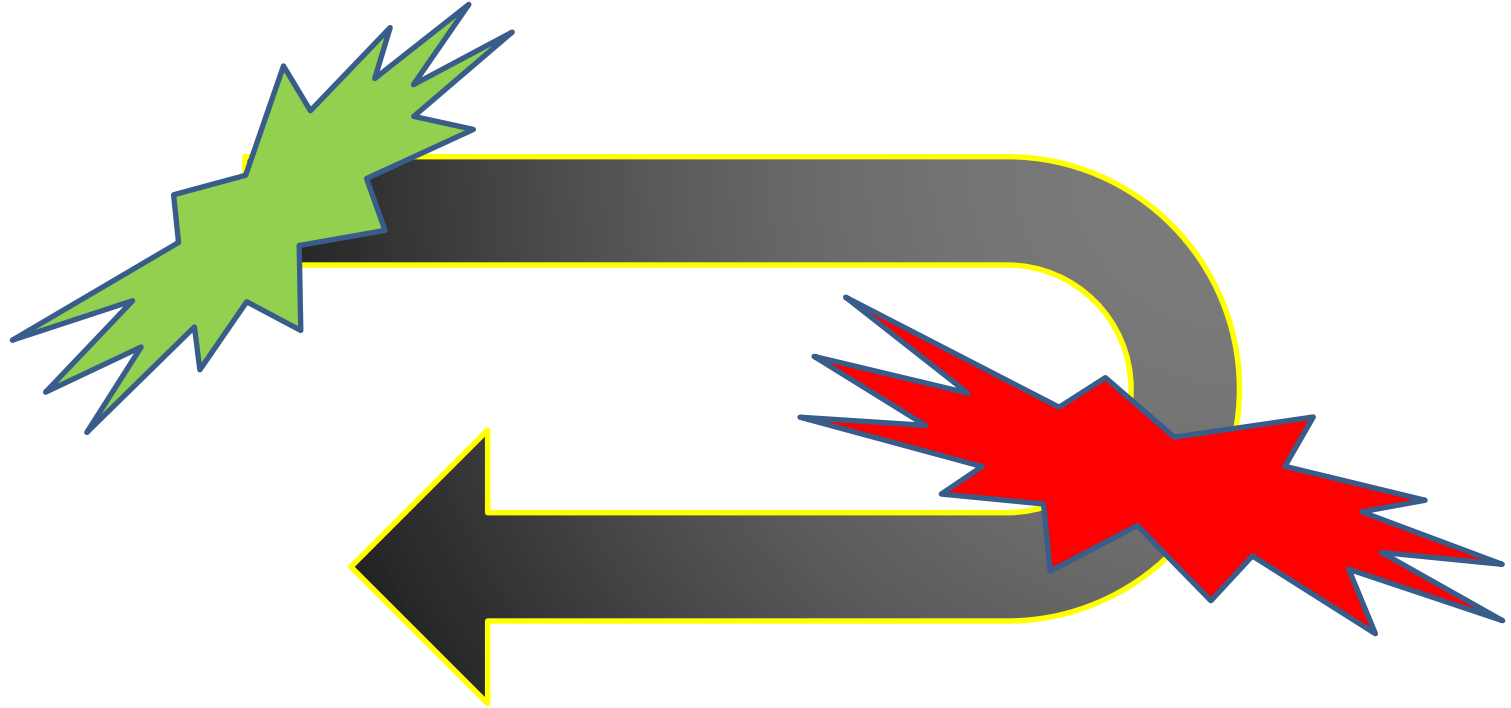
NEW CLEAN WATER ACT MANDATES

REDUCE



NEW CLEAN WATER ACT MANDATES

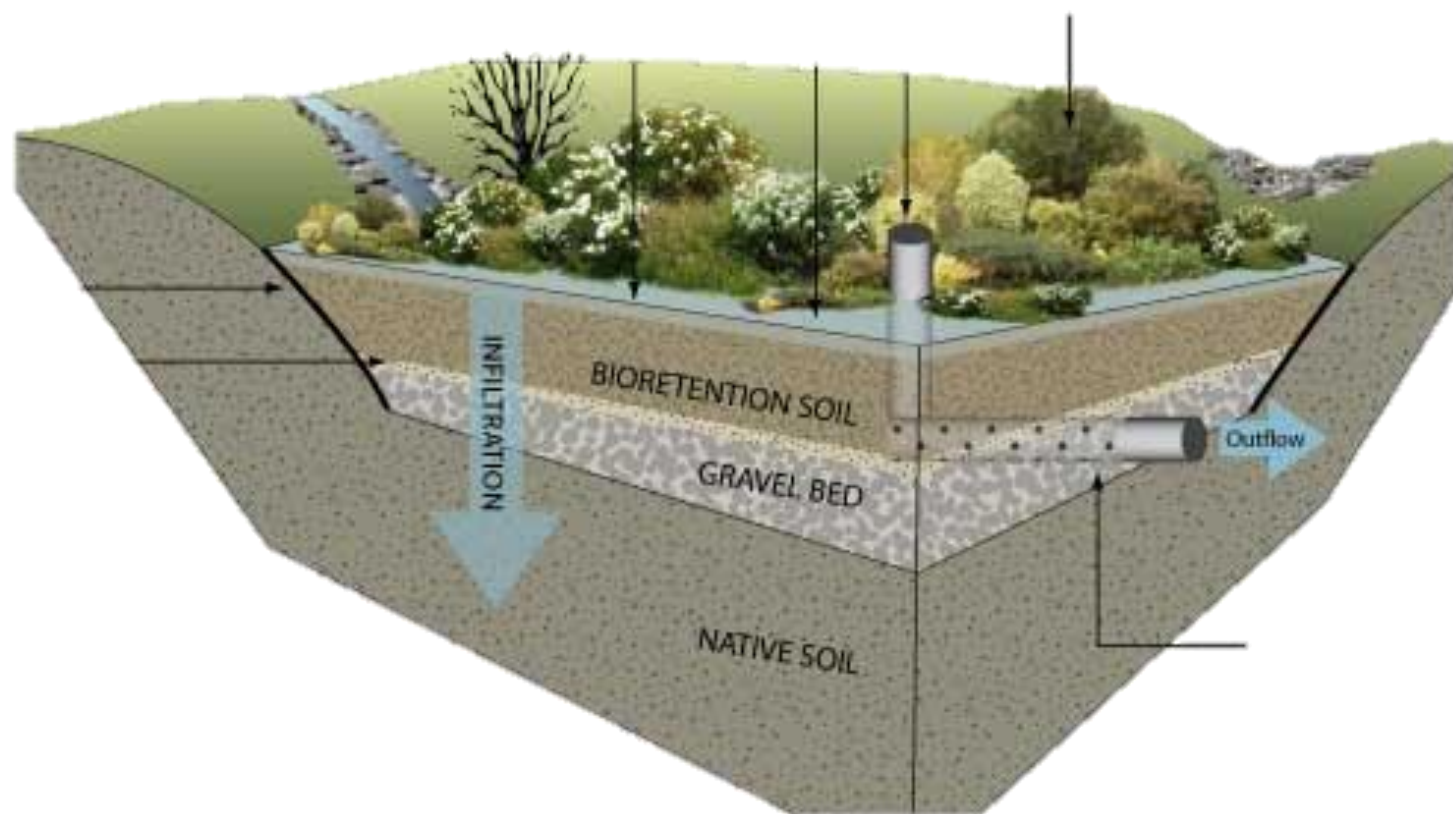
REDUCE AND RETROFIT









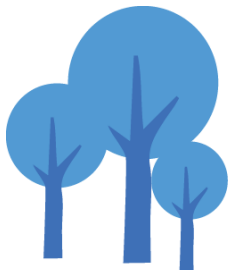






CLEAN WATER THROUGH FILTRATION

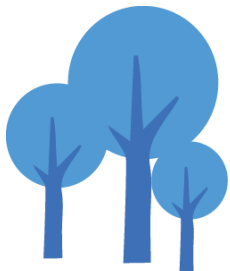
TREEBOX RAINGARDENS



STORMWATER MANAGEMENT DIVISION

CLEAN WATER THROUGH FILTRATION

TREEBOX RAINGARDENS



STORM WATER MANAGEMENT DIVISION

CLEAN WATER THROUGH FILTRATION

BIOSWALES

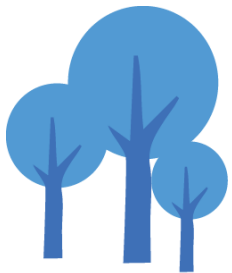


STORM WATER MANAGEMENT DIVISION



CLEAN WATER THROUGH RETROFITS

PERMEABLE ASPHALT

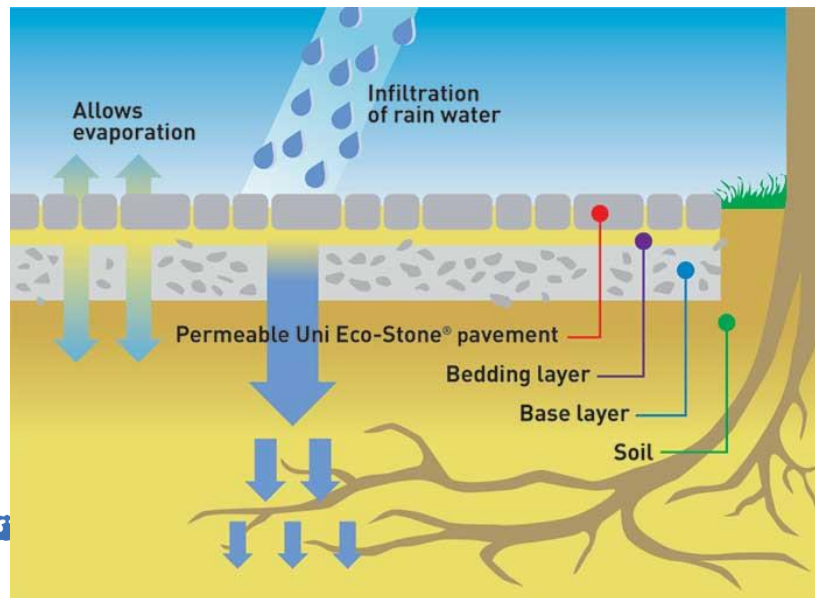


STORMWATER MANAGEMENT DIVISION



CLEAN WATER THROUGH FILTRATION

PERMEABLE PAVERS



NEW CLEAN WATER ACT MANDATES

EPA SETS AMBITIOUS GOALS

Mandate for Prince George's County

- Build filters to treat 15,000 impervious acres by 2025
 - Approximately 46,000 stormwater filtration devices
 - Will cost approximately \$1.2 billion
- Pay for this with a dedicated funding source (Clean Water Act Fee)

The Prince George's Model: *Make this mandate work for us*

- Clean our waters
- Revitalize older communities
- Lead with innovation
- Grow local economy
- Partner as much as possible

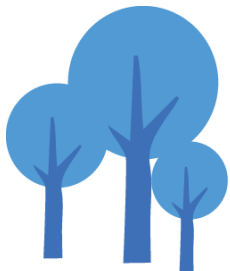
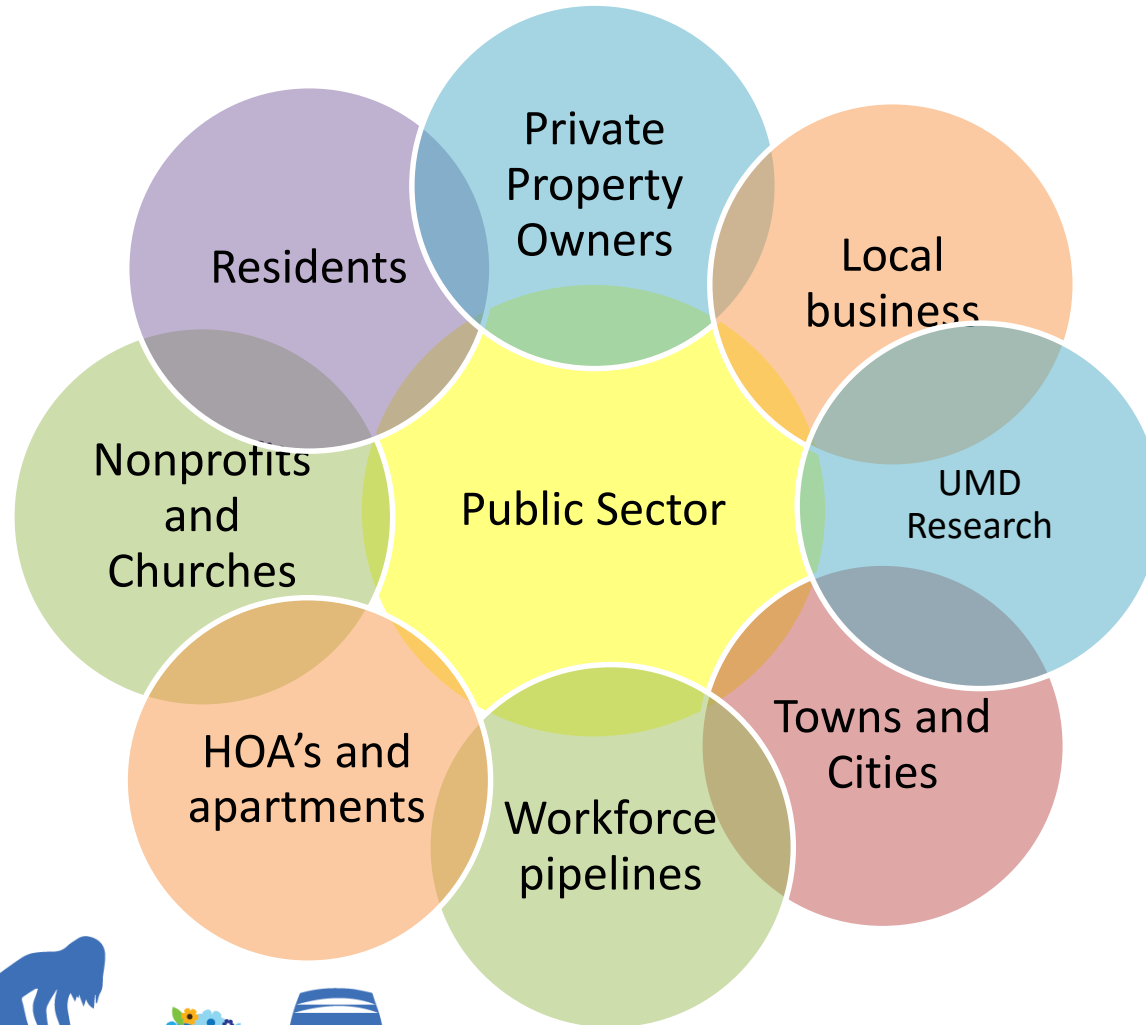


WE ARE NOT ENOUGH

Public Sector



WE MUST PARTNER



KEY PARTNERS:

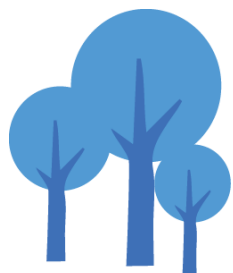
PRIVATE PROPERTY OWNERS

Our **Rain Check** Program provides up to **\$3 Million** in cash Rebates, Grants and technical assistance available for private property owners to install stormwater management practices on their property to reduce stormwater runoff pollution.



KEY PARTNERS: SCHOOLS

Our 200 school properties can help us meet our retrofit acreage goals while we help them meet their environmental literacy goals, turning raingardens into outdoor classrooms.



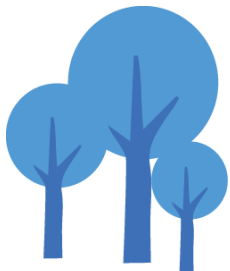
STORMWATER MANAGEMENT DIVISION



KEY PARTNERS: CHURCHES AND NONPROFITS

Alternative Compliance Program

1. **Easements:** Up to 50% reduction in fee
2. **Green Teams and Green Ministries:** Up to 25% reduction
3. **Green Housekeeping:** Up to 25% reduction



STORM WATER MANAGEMENT DIVISION



KEY PARTNER: PRIVATE SECTOR

Public Private Partnership (P3) for Efficiency

- Enhance strengths and mitigate weaknesses of the other
- Better, Greener, Faster: Efficiencies in procurement, design, construction & maintenance



THE CLEAN WATER PARTNERSHIP



Corvias®



Clean
Water
Utility Fee

Master Program Agreement

*County Oversight,
Partner Management*

Community Partnerships

*Universities
Faith & Nonprofit
Environmental
Job Training
Schools
Mentoring
Towns & Cities*

Construction

*Subcontractors
Suppliers
Materials
Workers
Inspectors
Drivers*

Maintenance

*Subcontractors
Suppliers
Services
Inspectors
Construction
Labors
Equipment*

Job creation

CLEAN WATER PARTNERSHIP

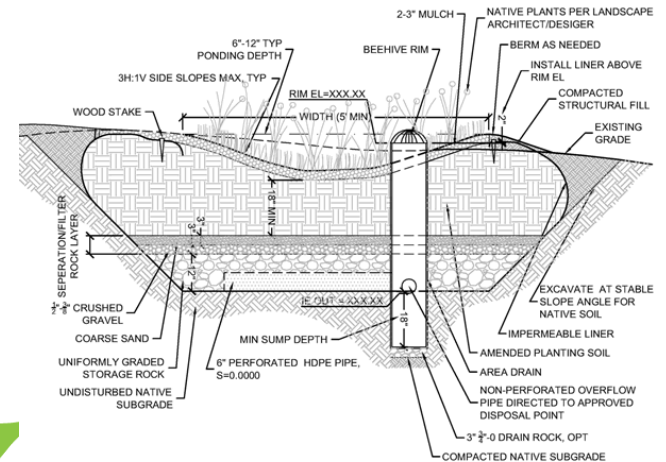
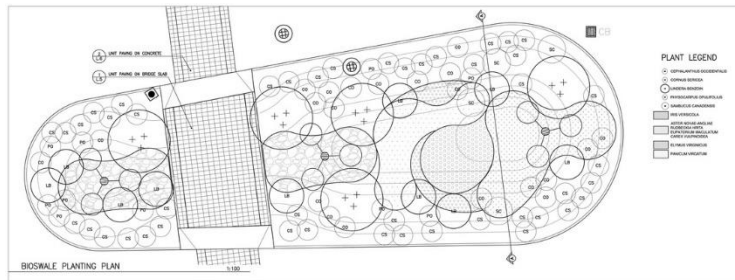
LOCAL INVESTMENT, JOBS, BUSINESS, DEVELOPMENT, COMMUNITY WEALTH

- Construction: 3 years to retrofit 2,000 acres
- Maintenance: 30 years
- Manage \$100M in contracting
 - Pay for performance:
 - Time & budget
 - Socio Economic –
 - 40% County procurement
 - Local business mentorship and development
- *Will “race” to 2000 acres vs DoE Capital Projects team*



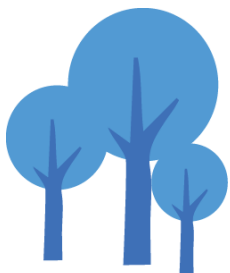
MAJOR ECONOMIC DRIVER

DESIGN AND ENGINEERING



MAJOR ECONOMIC DRIVER

CONSTRUCTION



STORMWATER MANAGEMENT DIVISION



MAJOR ECONOMIC DRIVER

MAINTENANCE



STORMWATER MANAGEMENT DIVISION



MAJOR ECONOMIC DRIVER

SUPPLIERS



STORMWATER MANAGEMENT DIVISION



WORKFORCE PIPELINES

TRAINING IS CRITICAL

- Community College
- Workforce Centers
- Nonprofits
- Labor
- Private Sector
- Universities



WORKFORCE PIPELINES

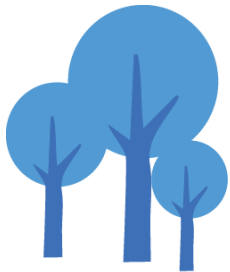
STORMWATER FACILITY MAINTENANCE COURSE



STORMWATER MANAGEMENT DIVISION

WORKFORCE PIPELINES

LANDSCAPE CONTRACTOR COURSE



STORMWATER MANAGEMENT DIVISION

SO....

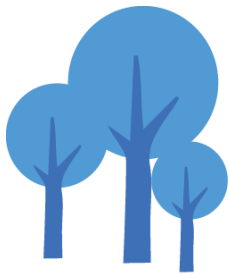
- We have to clean up our runoff pollution
- New EPA mandates require major infrastructure investments to do it
- We must make this mandate work for us: it is an unprecedented opportunity to invest in our own communities
- We must partner to leverage the strengths of others
- We will beautify our neighborhoods, clean our environment, and put people to work





Thank you.





STORMWATER MANAGEMENT DIVISION

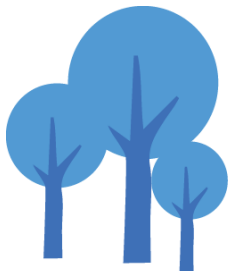
NEW CLEAN WATER ACT MANDATES

MUST ADDRESS POLLUTED RUNOFF



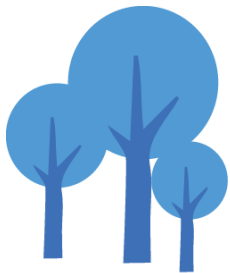
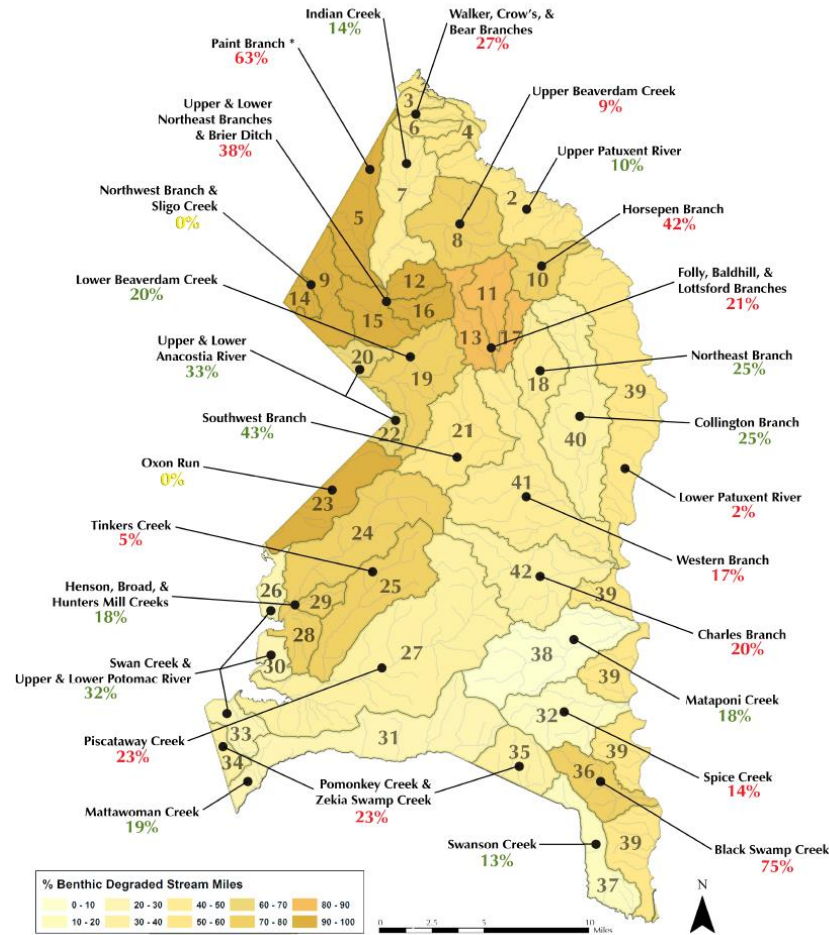
NEIGHBORHOOD POLLUTION INCREASING

MUST ADDRESS POLLUTED RUNOFF



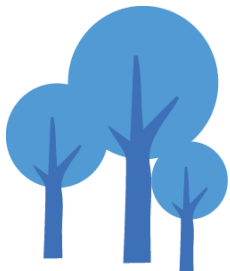
STORM WATER MANAGEMENT DIVISION

NEW CLEAN WATER ACT MANDATES



NEIGHBORHOOD POLLUTION INCREASING

MUST ADDRESS POLLUTED RUNOFF



STORMWATER MANAGEMENT DIVISION