

OYSTER MANAGEMENT & RESTORATION

Andrew Button

Head, Conservation and Replenishment

Virginia Marine Resources Commission

380 Fenwick Road, Bldg. 96

Fort Monroe, Virginia

Office 757 247-2121

andrew.button@mrc.virginia.gov





64,299 square
mile
drainage



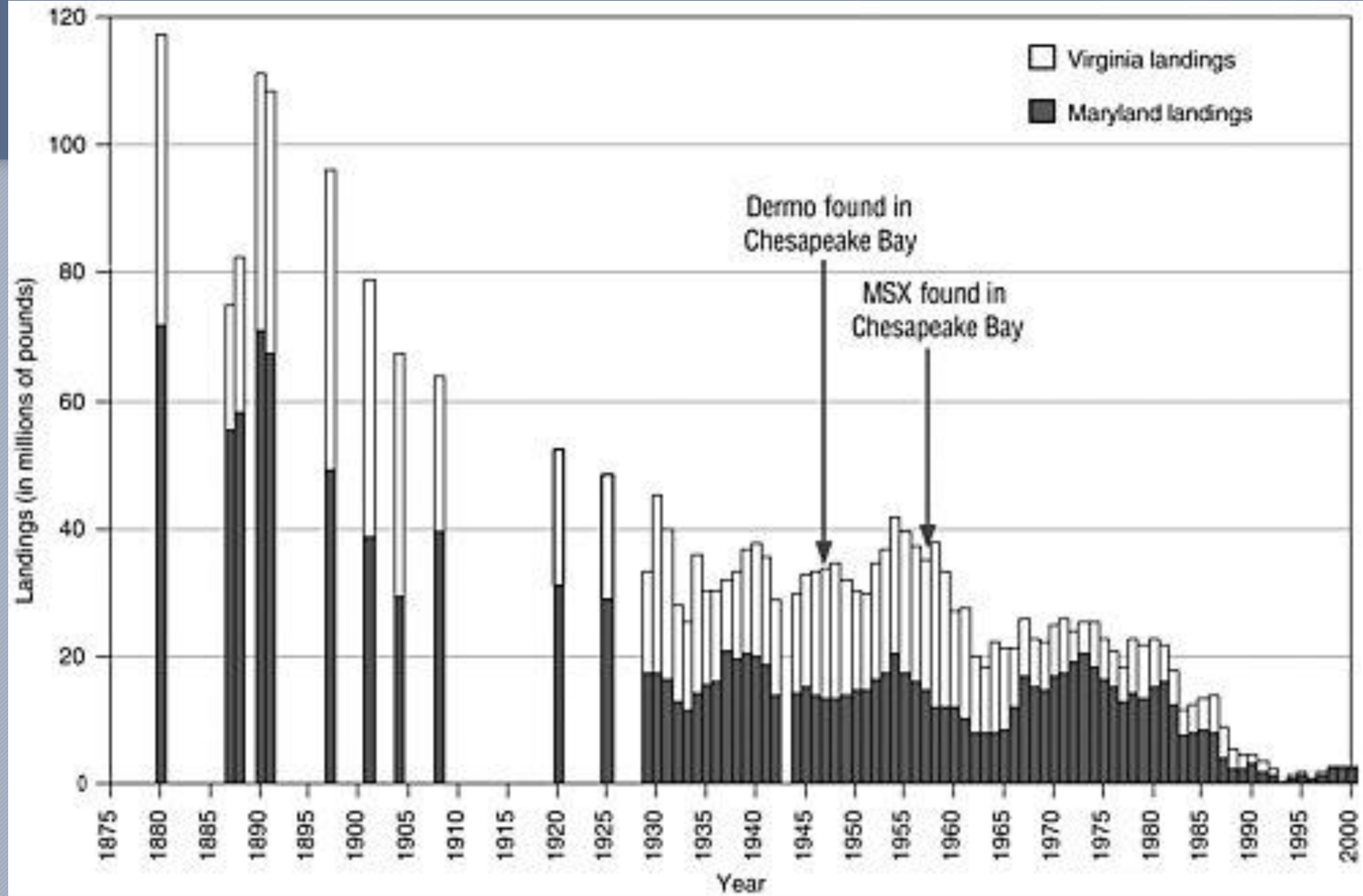
35 MILLION YEARS OF HISTORY IN TWO MINUTES AS IT RELATES TO BAY OYSTERS



Photo Credit: Nicolle Rager-Fuller/NSF

- 35 million years ago- Asteroid impact near Cape Charles
- 16,000 years ago- Beginning of the end of last Ice age (The Bay of today is born)
- 5,000 years ago- Oysters start to move in
- ~1000-2000 years ago- "Hey! You can eat these rocks"
- 400-500 years ago- Beginning of decline
- 1800s- The oyster dredge comes south
- 1890s- We have a problem (over harvest)
- 1920s We have a solution (management/replenish)
- 1960s- We have a new problem (disease)
- 1980s- More than hair was bad...(more disease/hurricanes/continued degradation)
- 1990s-2000s-Lowest of the low (fishery at its lowest point ever)





OYSTER LANDINGS (1880 - 2015)



Out of business. Passing of the Chesapeake Bay Sail Canoe, Supplanted by Motor Boats.

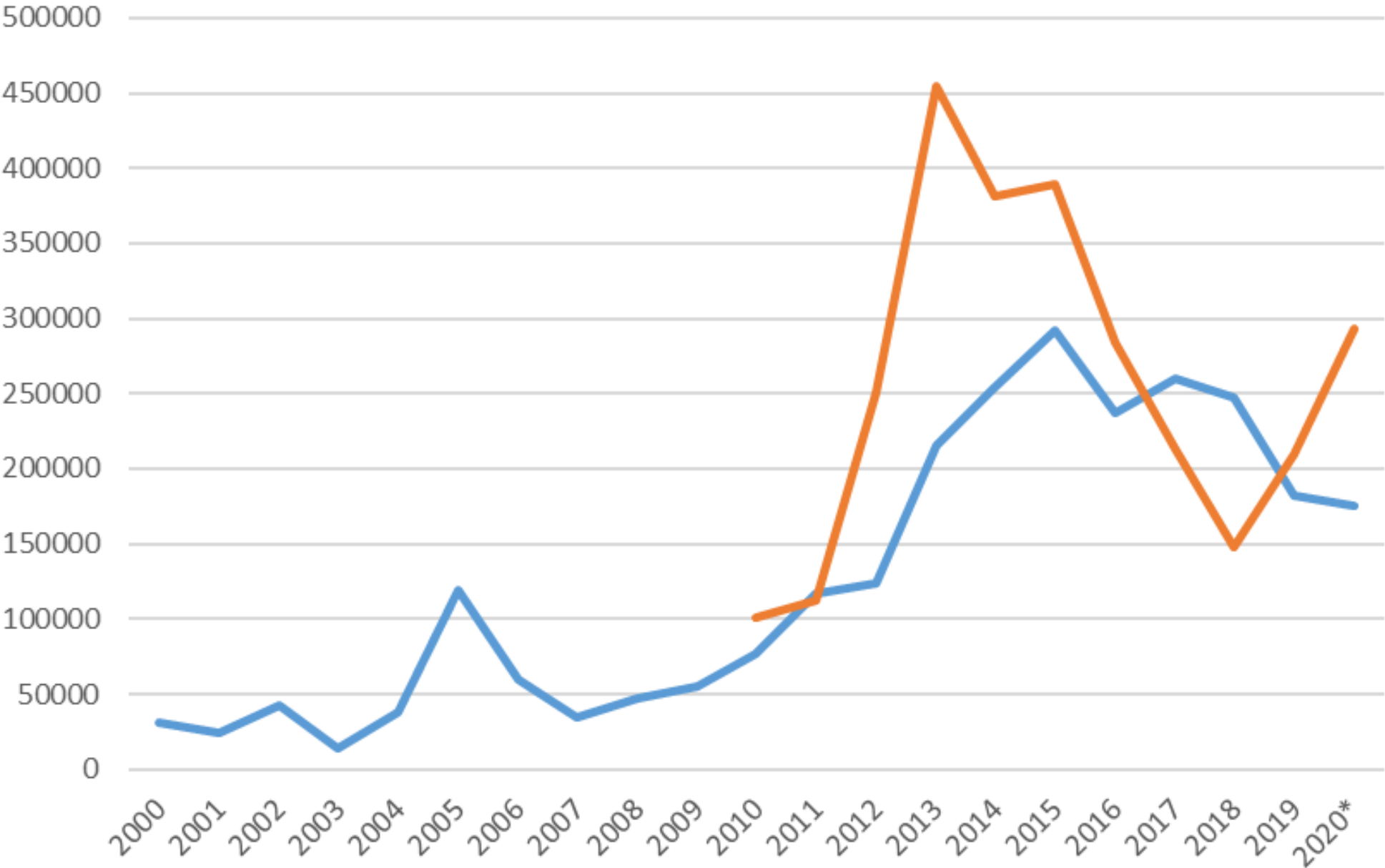
REEF RESTORATION AS OF 2006



WHERE ARE WE NOW??



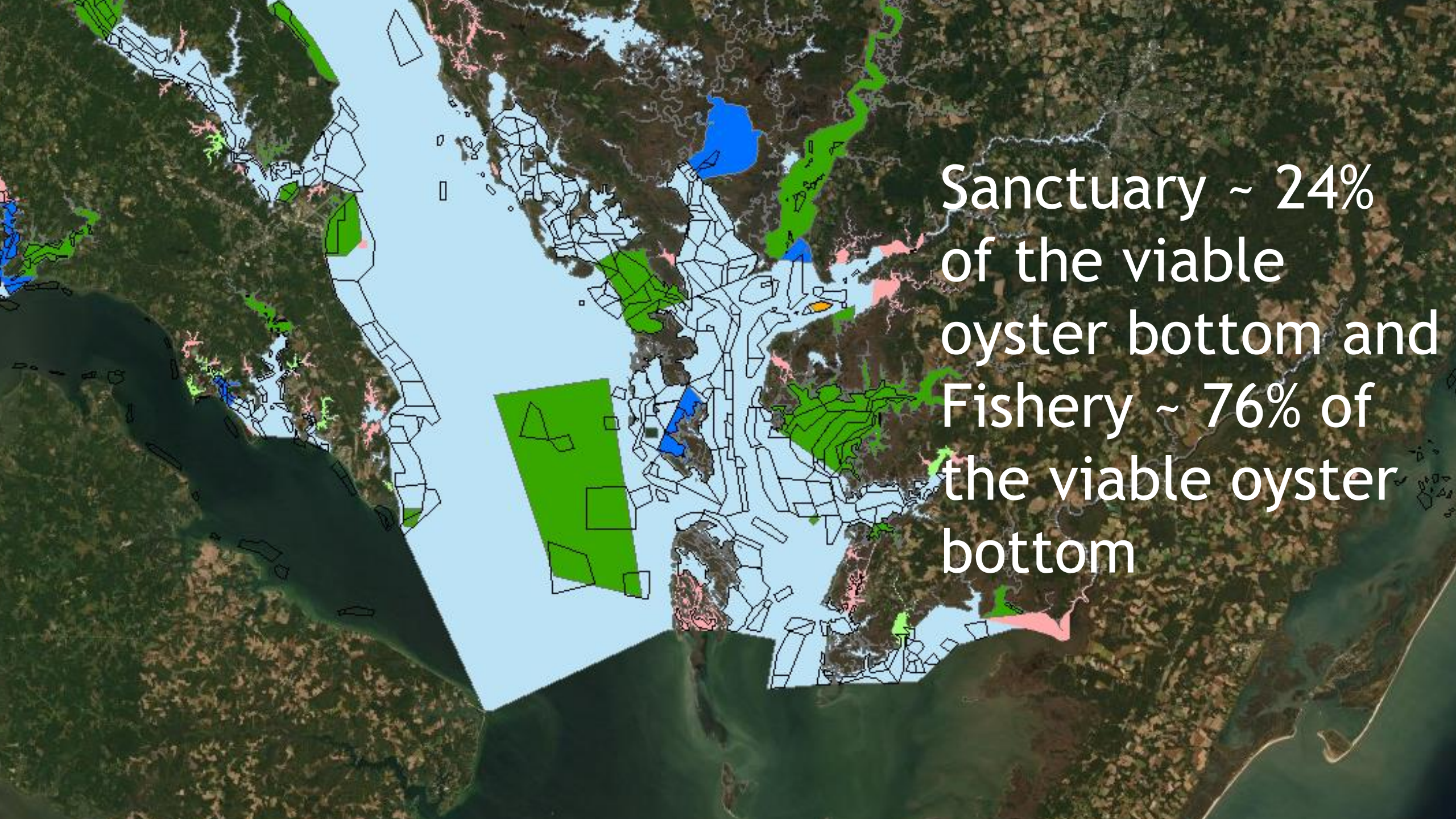
Sum of Public Sum of MD public



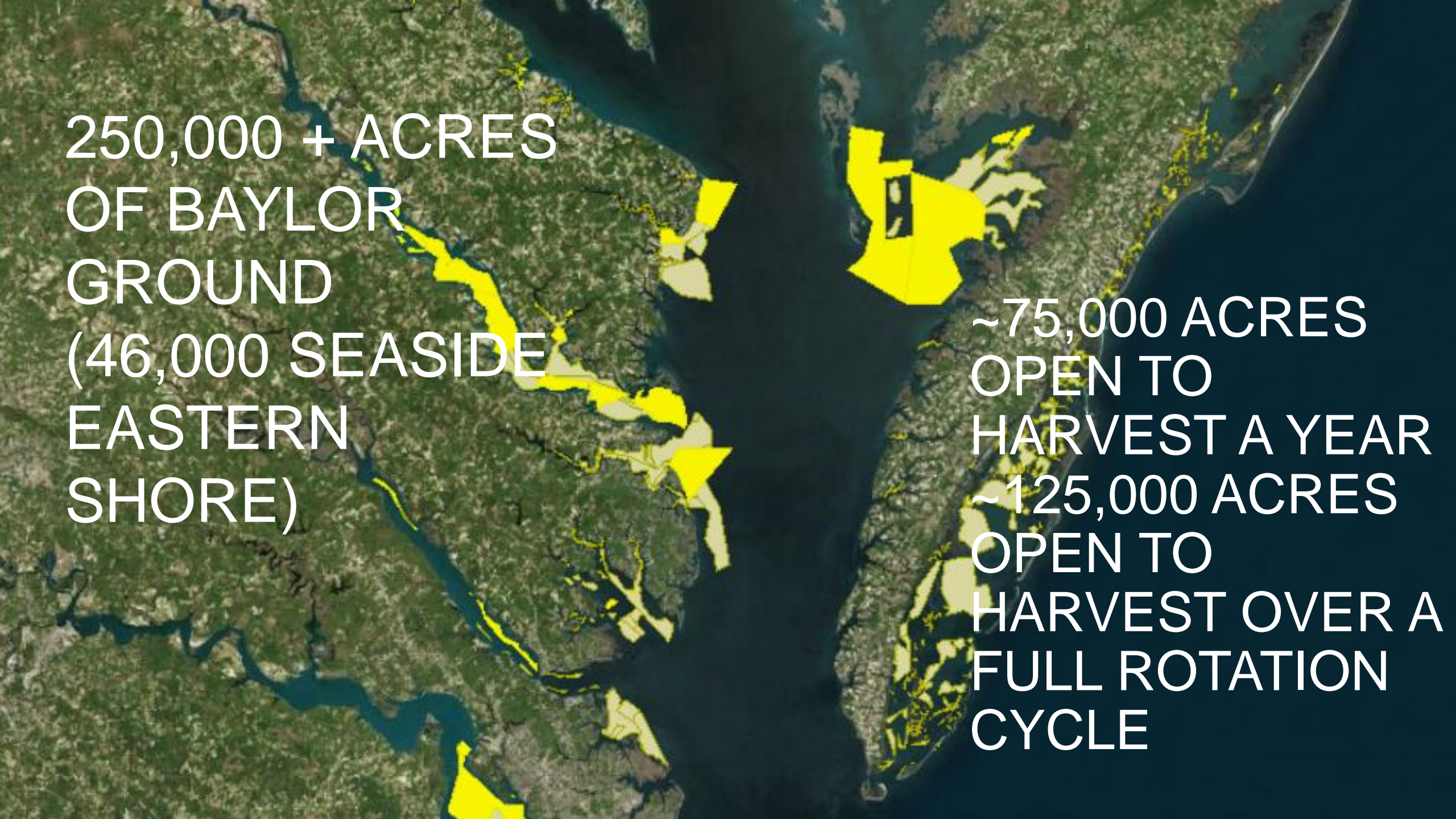
Values

Sum of Public
Sum of MD public

Year ▼

An aerial photograph of a coastal region, likely a bay or estuary, with a white polygonal boundary delineating a fishery. Within this boundary, several green polygons represent sanctuaries. The surrounding land is covered in dense vegetation, and the water is a dark, calm blue. The text is overlaid on the right side of the image.

Sanctuary ~ 24%
of the viable
oyster bottom and
Fishery ~ 76% of
the viable oyster
bottom

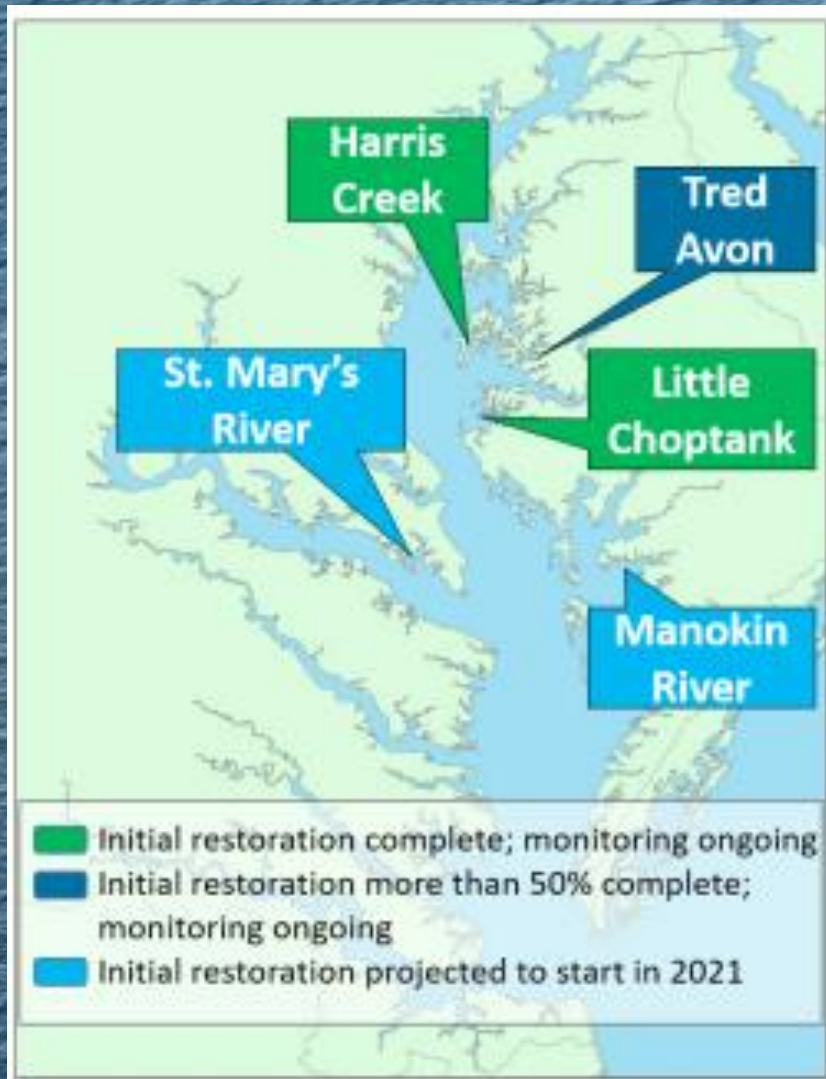
An aerial photograph of a coastal region, likely a bay or estuary, with numerous land parcels highlighted in yellow. The land is green and brown, while the water is dark blue. The yellow highlights are scattered along the shoreline and in some inland areas. A large yellow parcel in the upper right contains a black letter 'H'.

250,000 + ACRES
OF BAYLOR
GROUND
(46,000 SEASIDE
EASTERN
SHORE)

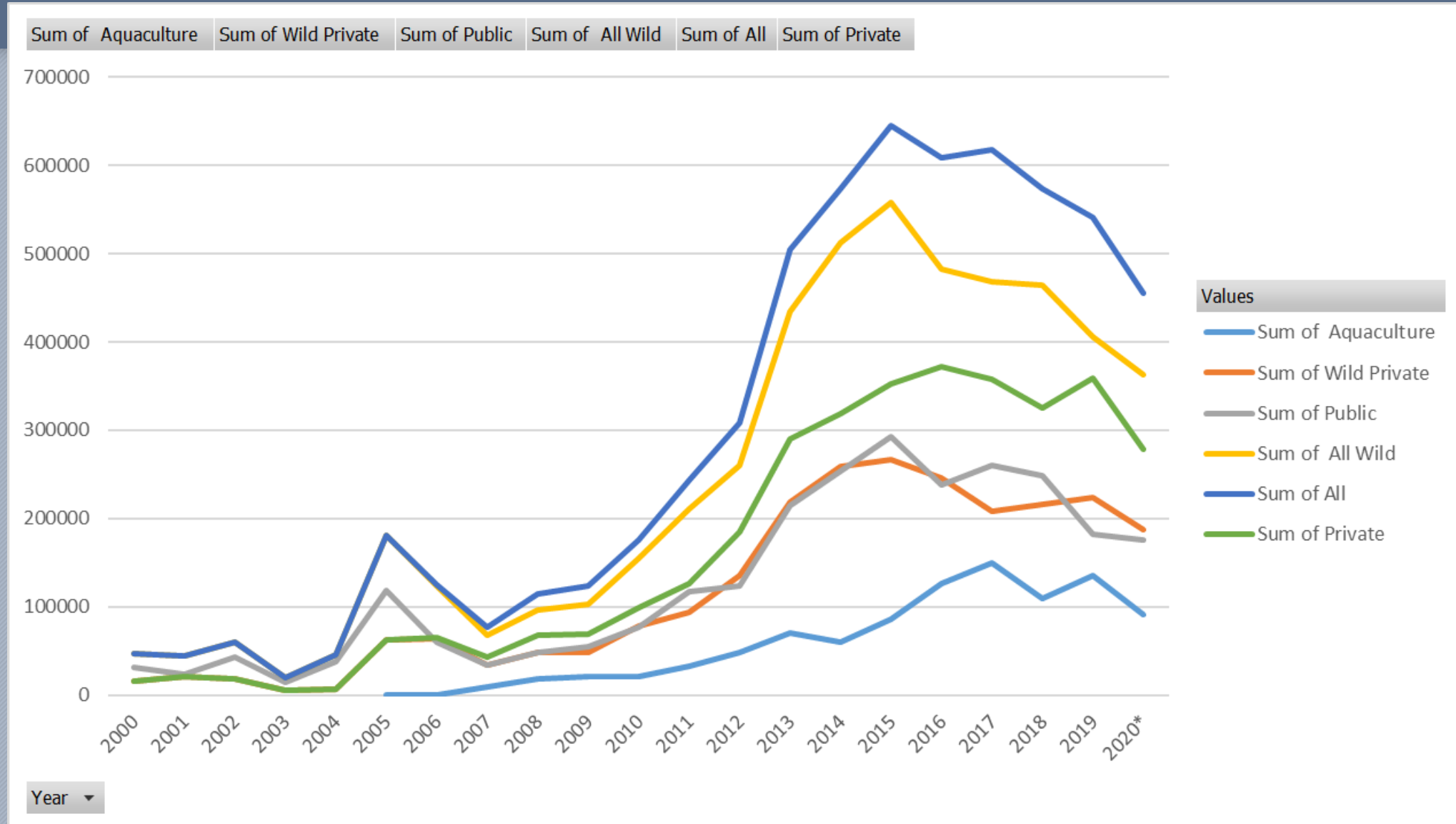
~75,000 ACRES
OPEN TO
HARVEST A YEAR
~125,000 ACRES
OPEN TO
HARVEST OVER A
FULL ROTATION
CYCLE

THE 4TH WAVE IN THE RESTORATION EFFORT

“Continually increase finfish and shellfish habitat and water quality benefits from restored oyster populations. Restore native oyster habitat and populations in 10 tributaries by 2025 and ensure their protection.”

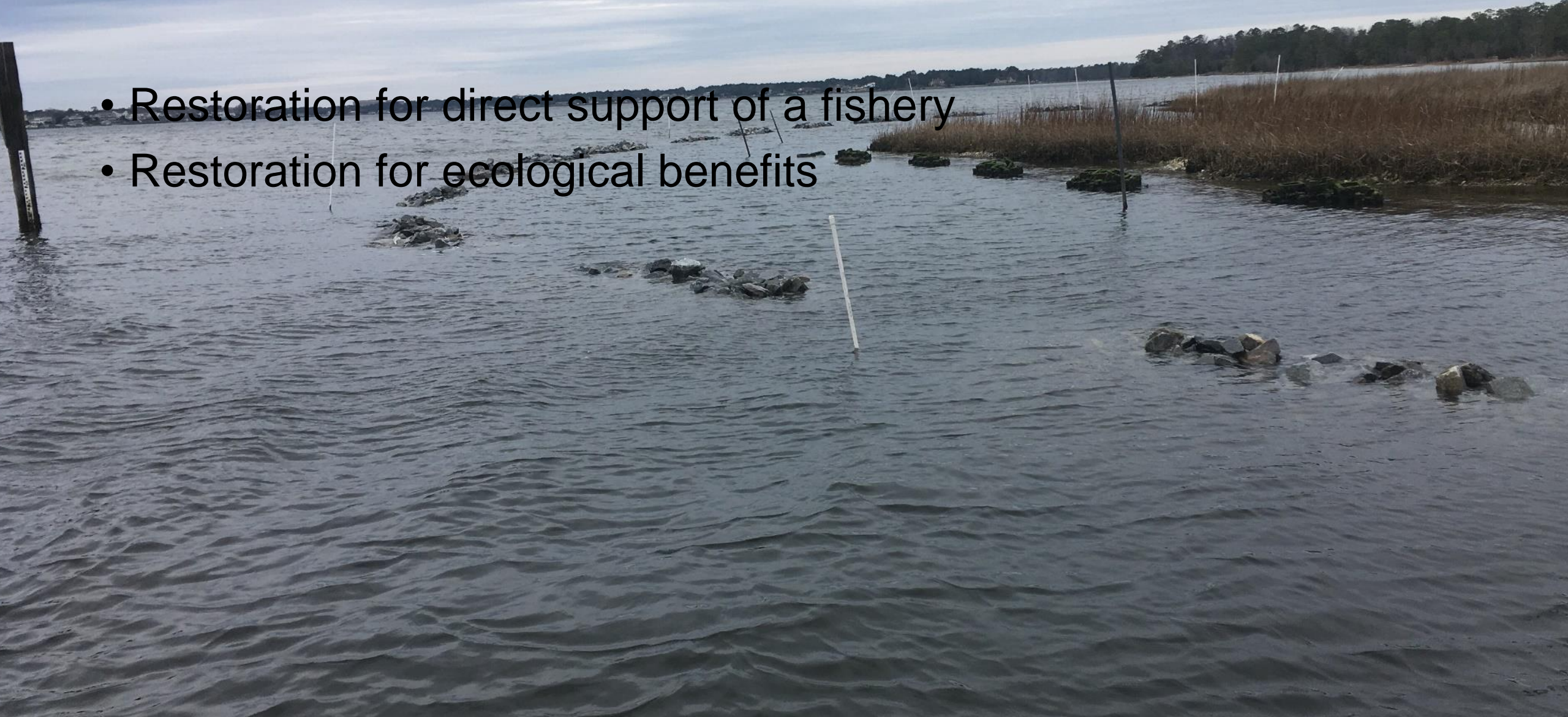


WHAT IS A “WILD” OYSTER?



MERGING DIFFERENT OUTCOMES INTO SHARED GOALS

- Restoration for direct support of a fishery
- Restoration for ecological benefits



THANK YOU



Andrew Button

Head, Conservation and Replenishment

Virginia Marine Resources Commission

380 Fenwick Road, Bldg. 96

Fort Monroe, Virginia

Office 757 247-2121

andrew.button@mrc.virginia.gov