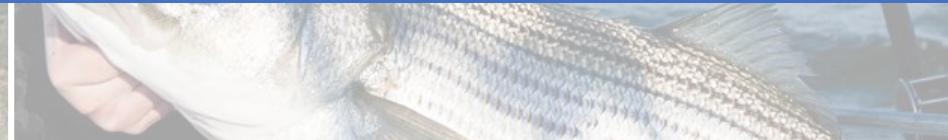
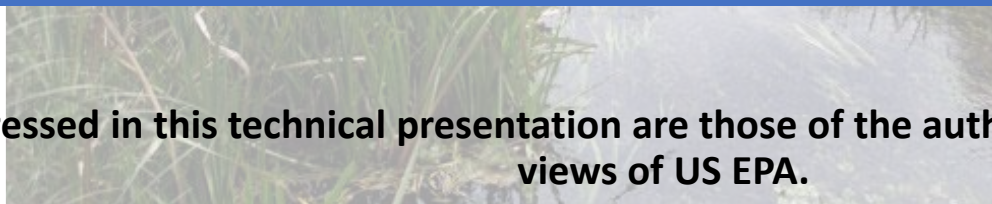
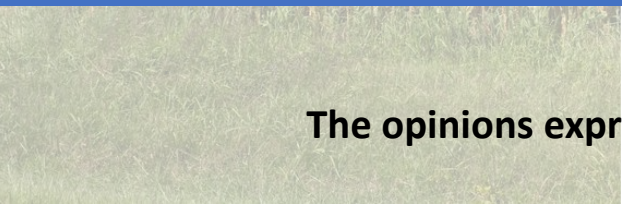




# Putting it all together: integrating the monitoring and modeling to inform management



**Emily Trentacoste, PhD**  
EPA Chesapeake Bay Program Office  
Chesapeake Bay Commission  
11/8/2018

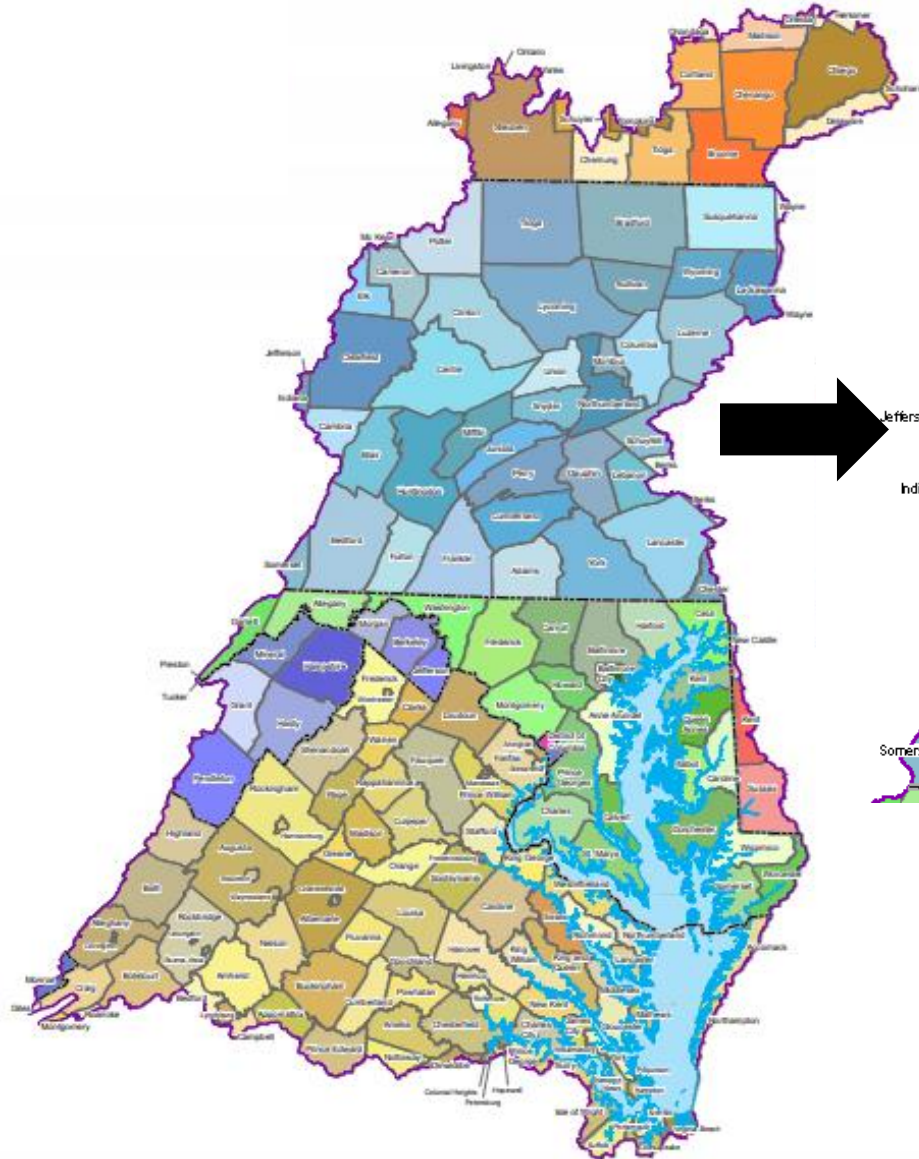


**The opinions expressed in this technical presentation are those of the author and do not necessarily reflect the views of US EPA.**

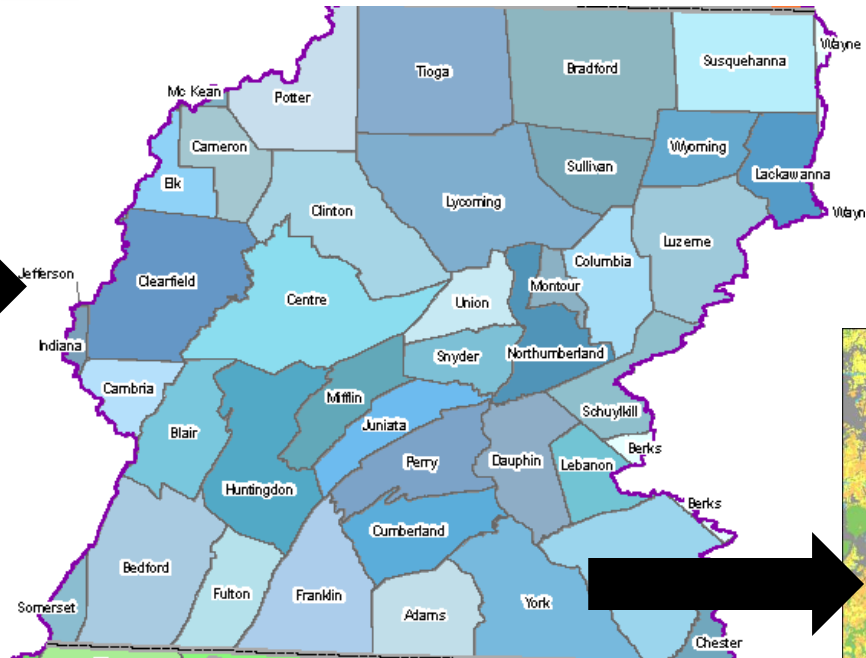
# Developing storylines to demonstrate management connections

**Chesapeake Bay Watershed Counties**

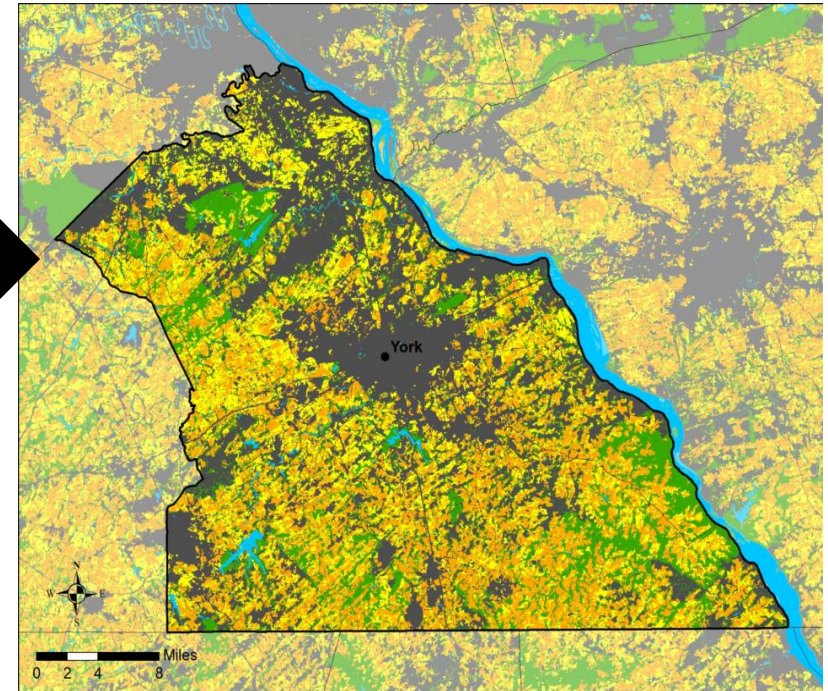
**We'll use York County, PA as an example**



**Pennsylvania Counties**

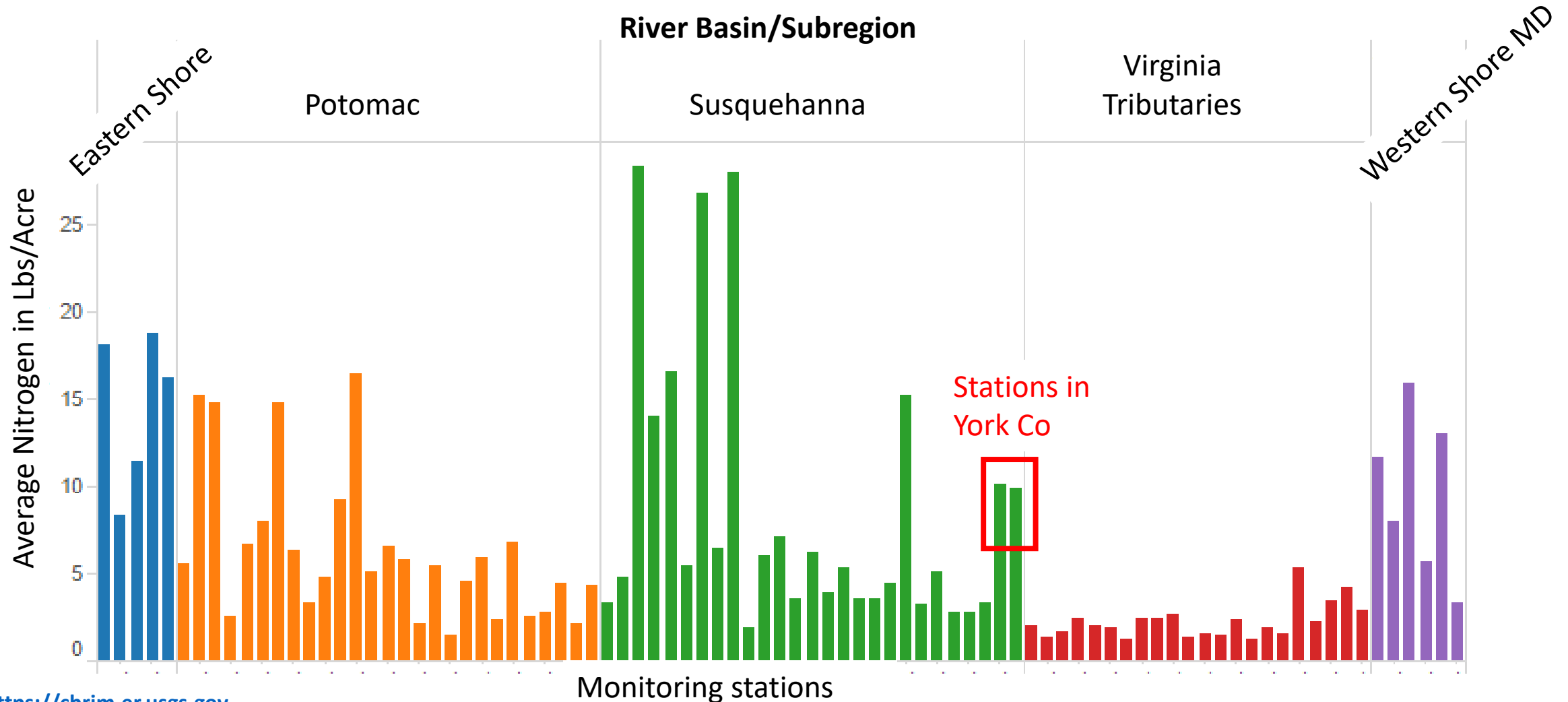


**York County, PA**



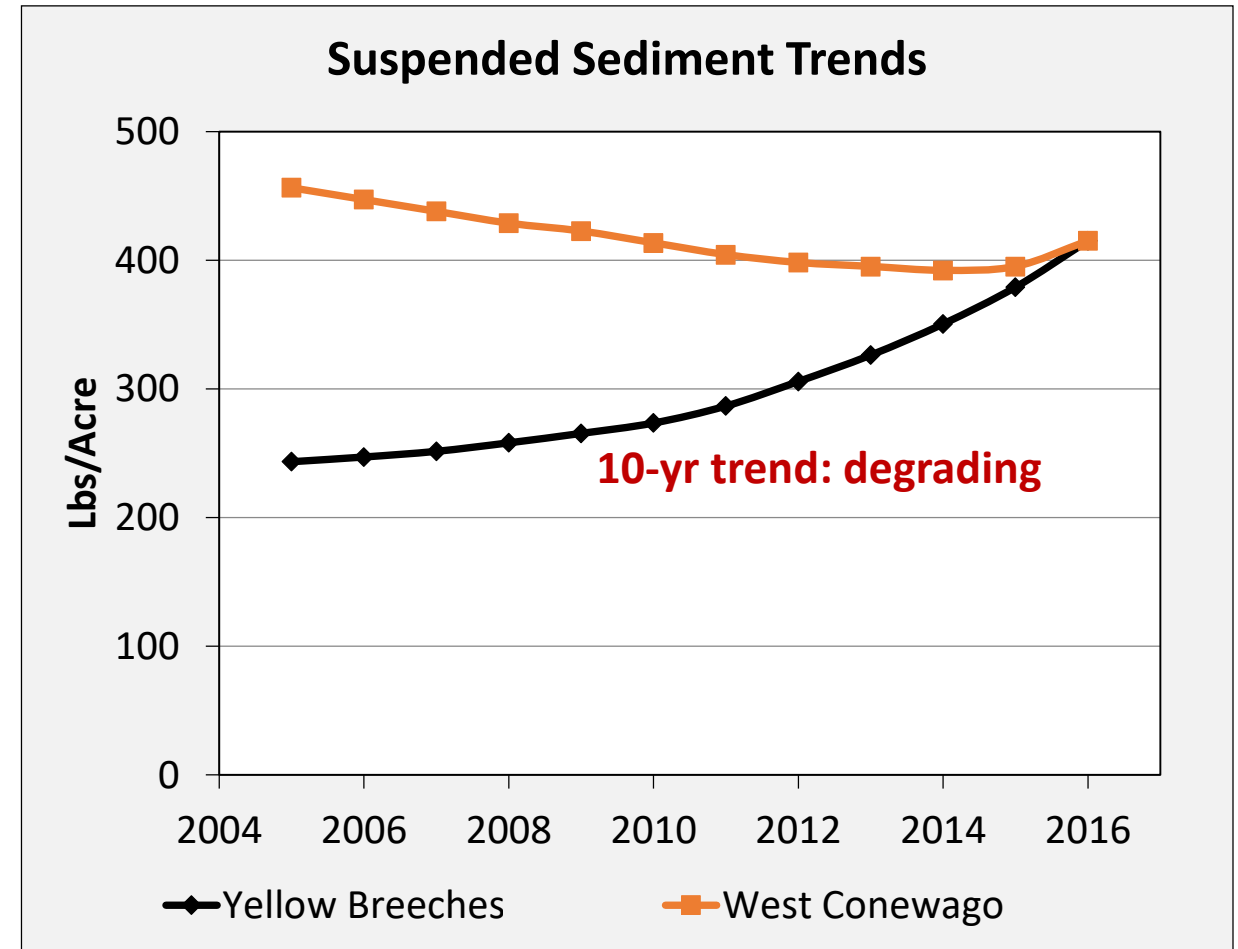
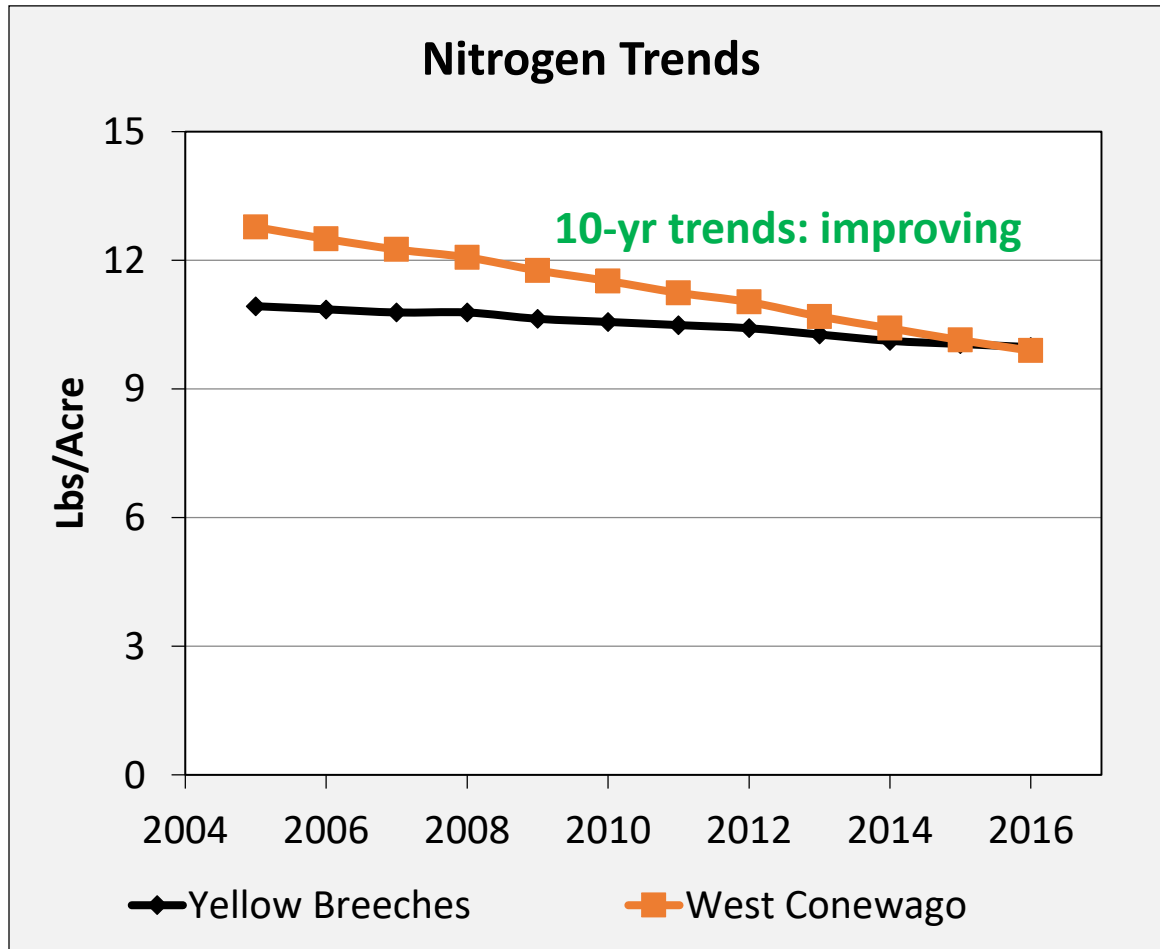
# Using the monitoring to inform planning

Amount of nitrogen in streams across all monitoring stations in the Chesapeake Bay watershed



# Using the monitoring to inform planning

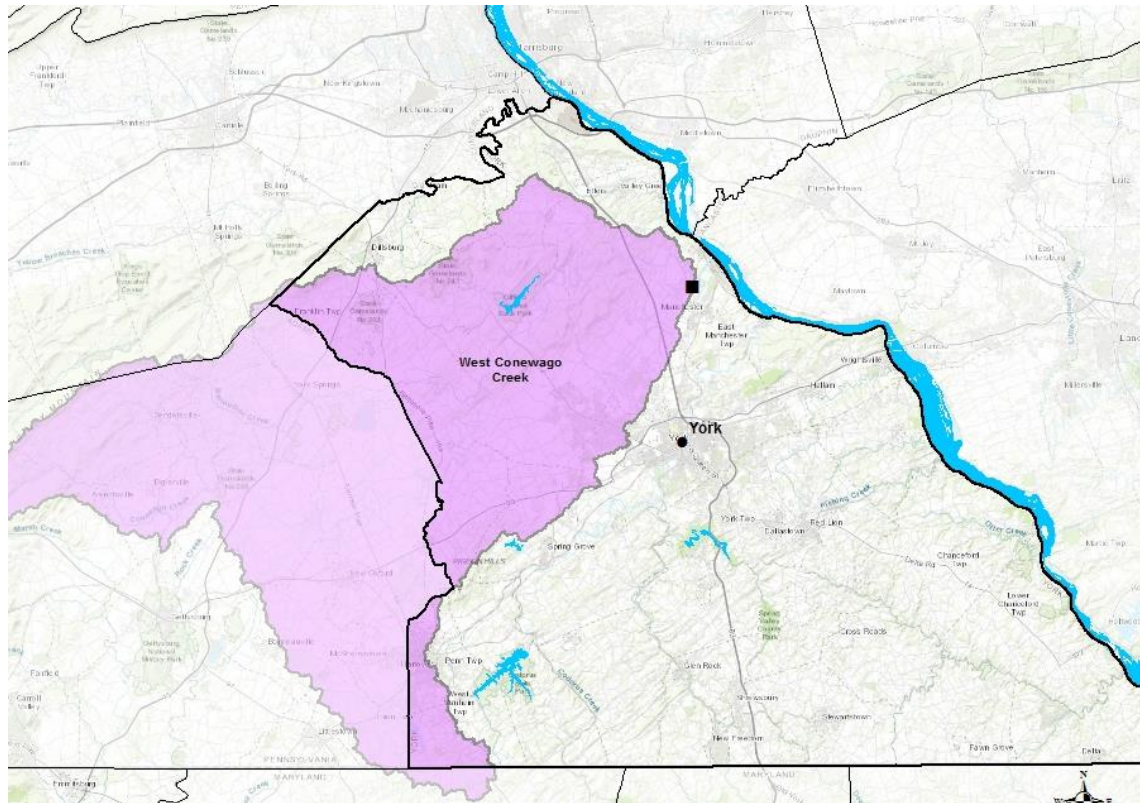
Monitoring in York Co watersheds reveals that we are making progress in some areas, but require more effort in others



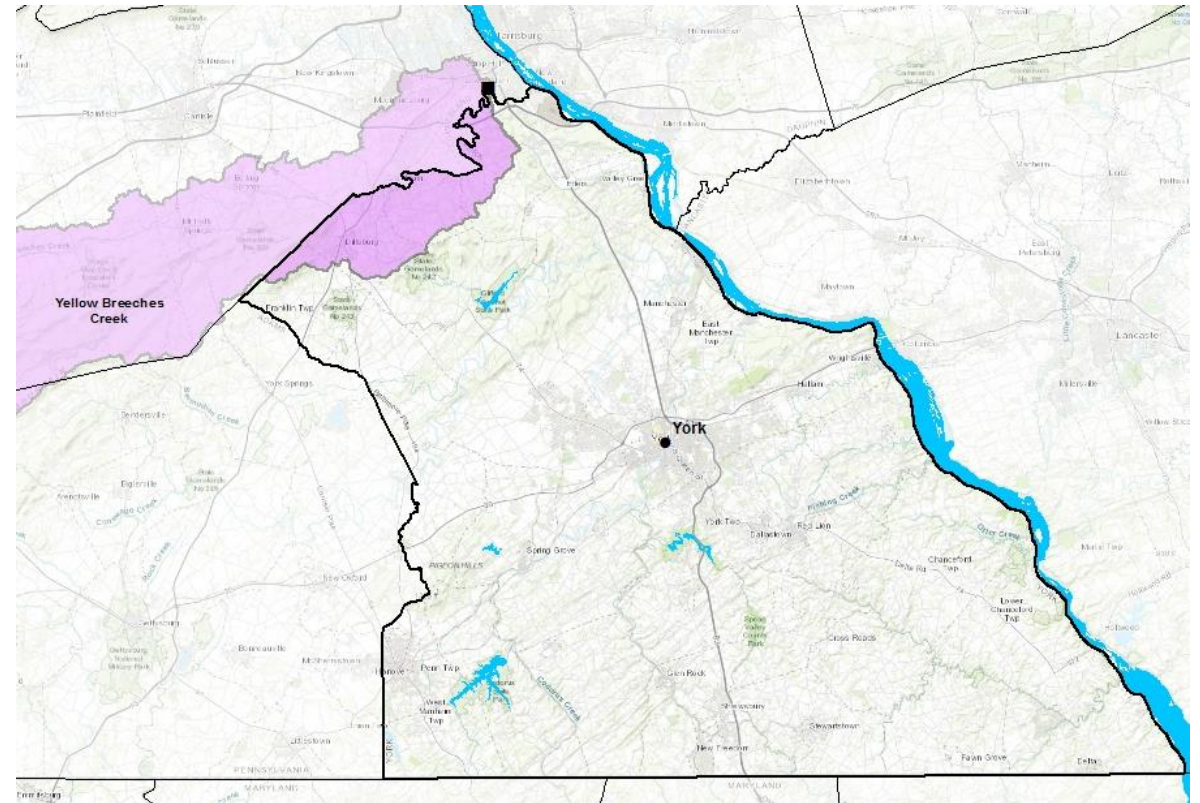
# But we can't monitor everywhere

**York County's monitoring stations cover less than half the county and overlap other counties**

**West Conewago Creek**

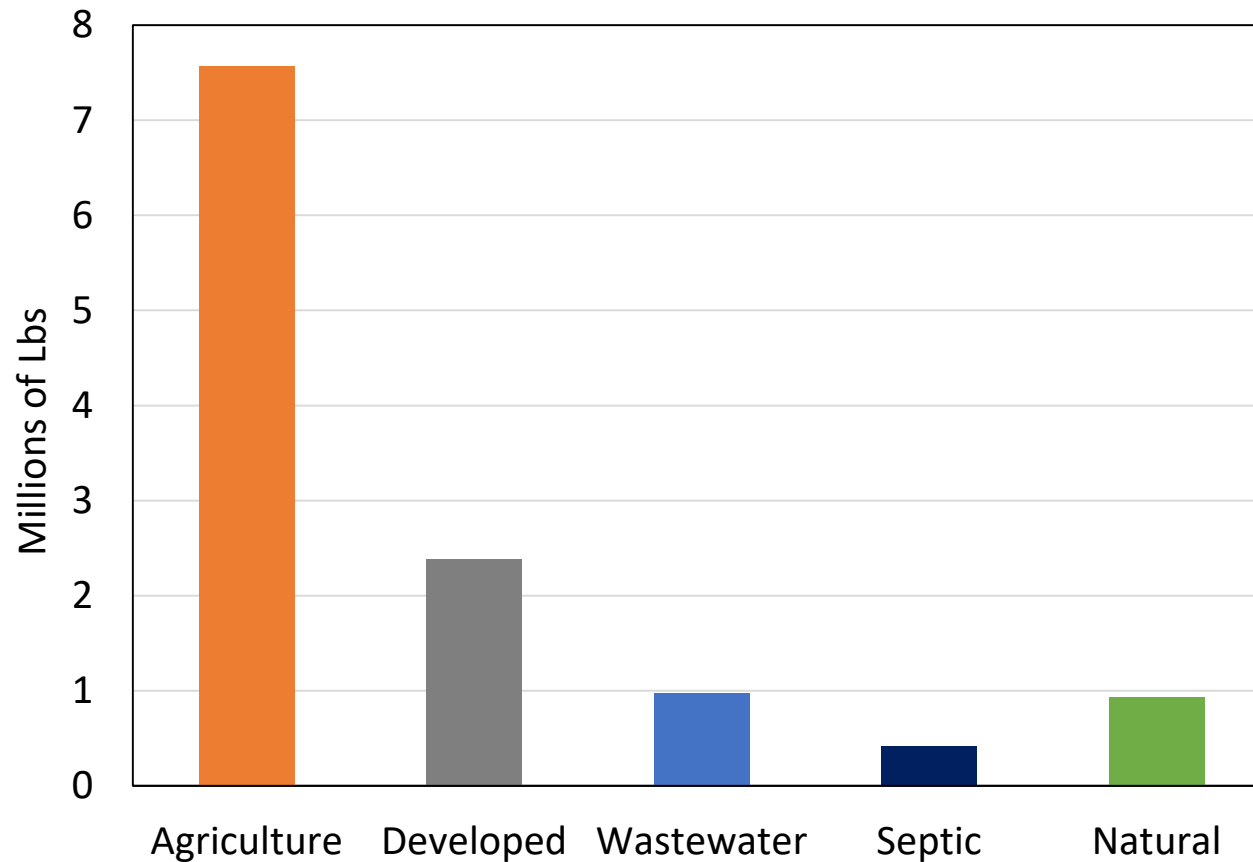


**Yellow Breeches Creek**

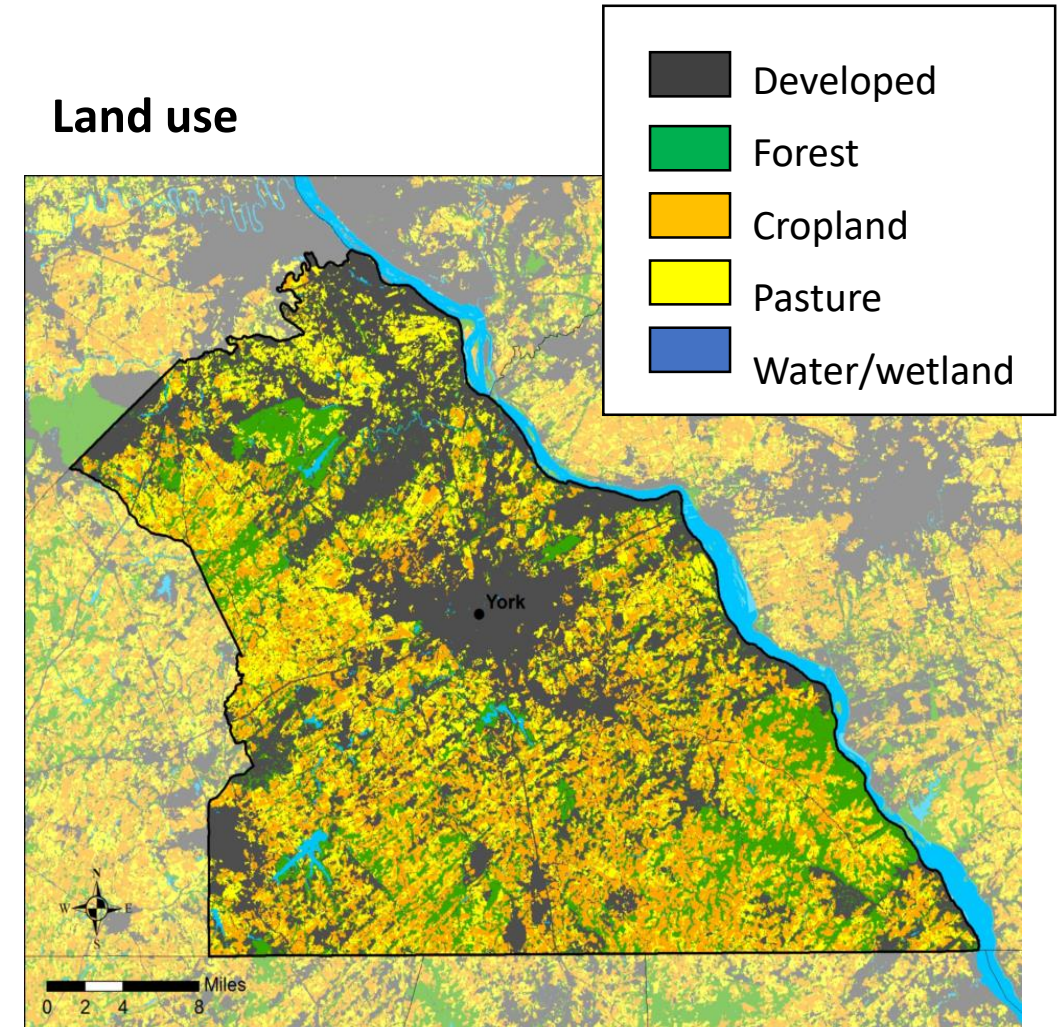


# We can use the model to estimate sources

**York County Nitrogen Delivered to Local Streams  
(2017 Progress)**



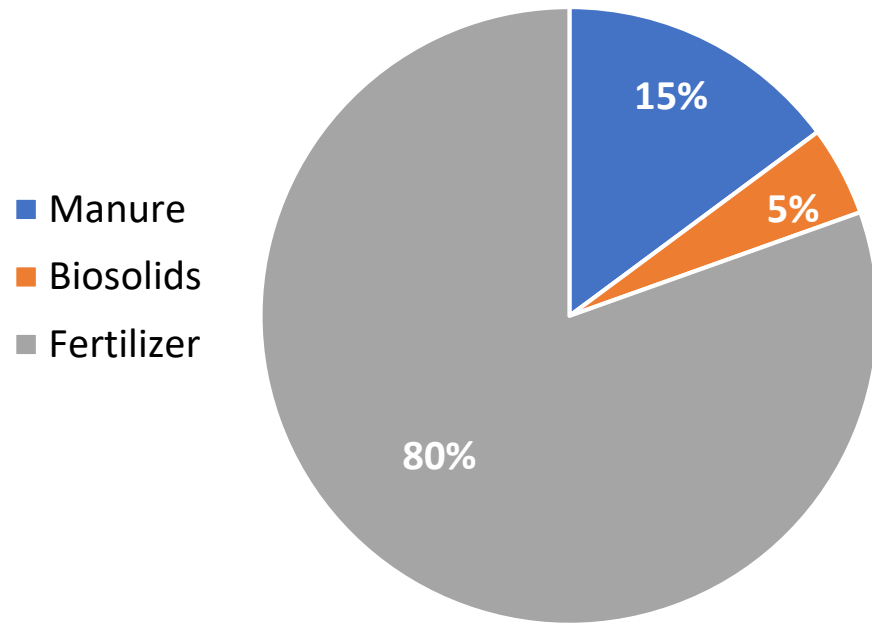
**Land use**



# Understanding sources helps identify opportunities

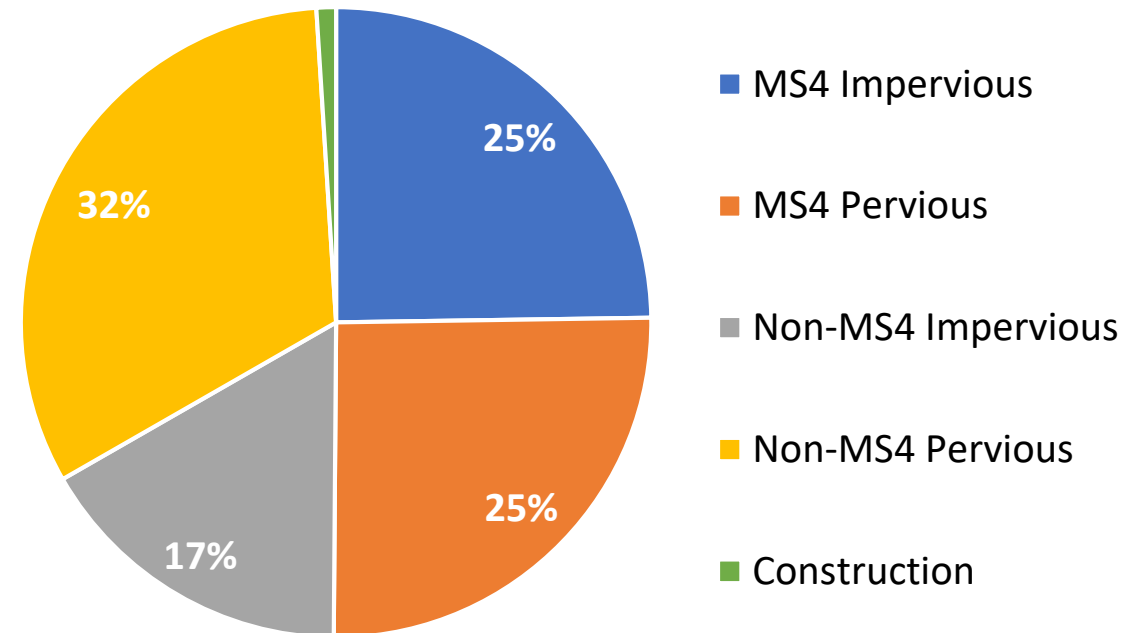
## Example: Agricultural Nutrient Application

Estimated Source of Nitrogen Applied in York County



## Example: Urban Stormwater Nutrient Sources

Estimated Stormwater Nitrogen Sources in York County



**Pervious:** grass, lawns, etc.

**Impervious:** roads, buildings, parking lots, etc.

**MS4:** Regulated stormwater under MS4 permits

# Identifying opportunities for restoration efforts

## Remaining Opportunities in York County for Agricultural Practices

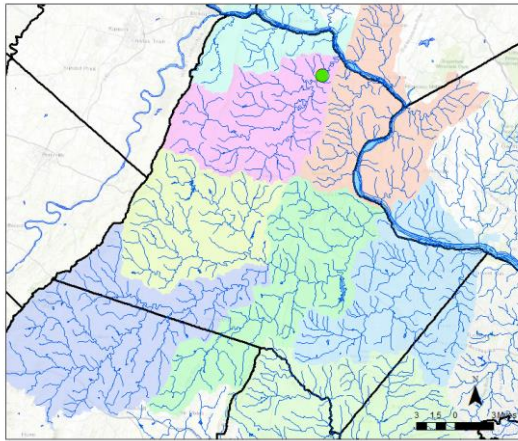
Practice	Current Reported Implementation	Acres Remaining
Basic Nutrient Management	6%	185,000
Conservation Tillage	55%	67,000
Cover Crop	7%	136,000
Prescribed Grazing	6%	18,000
Barnyard Runoff Control	69%	70
Soil & Water Conservation Plans	10%	180,000
Forest Buffers	NA	13,200

# Utilizing storylines to demonstrate management connections

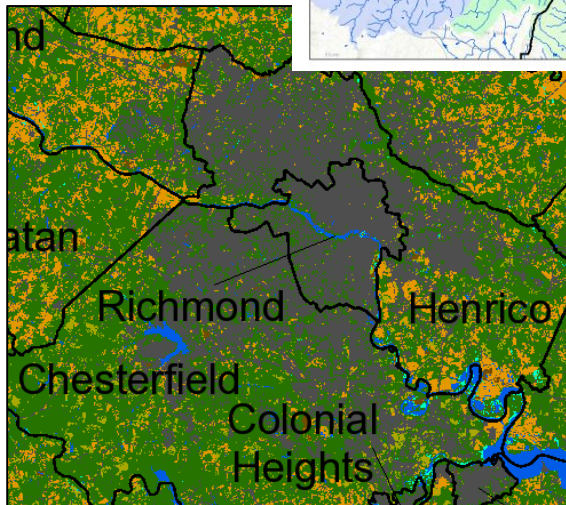
We've developed >20 integrated assessments/storylines at different scales across the entire watershed

These are just a few examples:

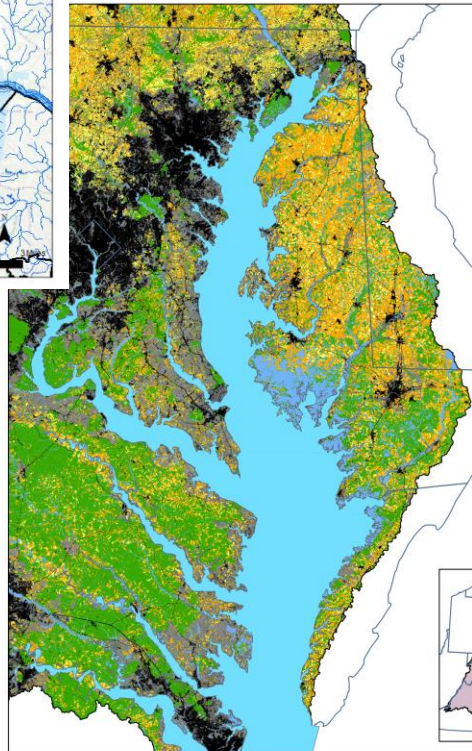
Loudoun County, VA



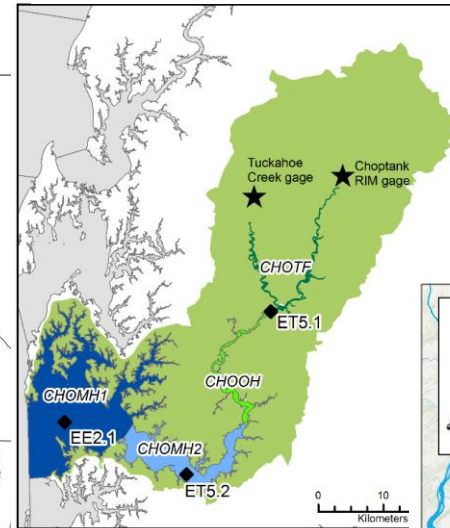
Richmond, VA



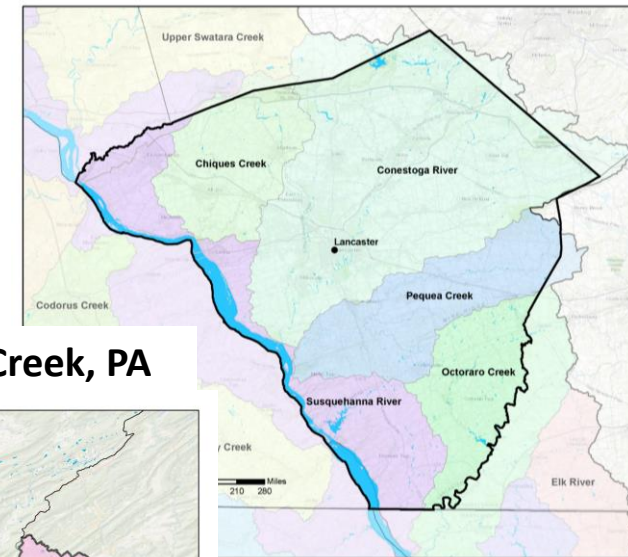
Eastern Shore



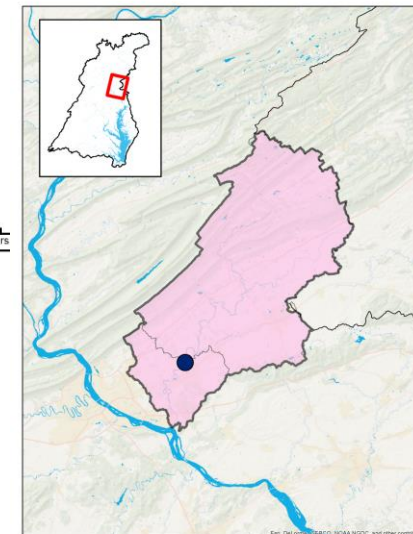
Choptank River in MD



Lancaster County, PA

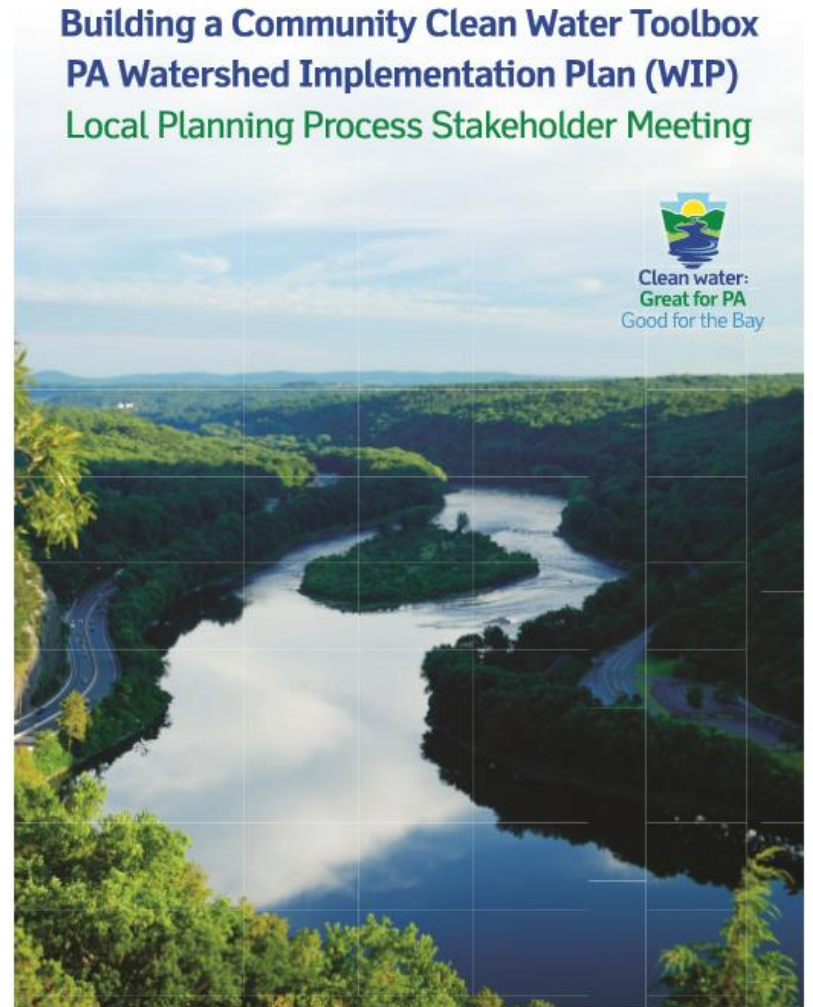


Swatara Creek, PA



# Incorporating monitoring and modeling into planning

- Pennsylvania – used storyline concept to develop county-specific “toolboxes” and provide information to local areas
- Watershed groups – created storylines that helped identify areas where they can be more active
- WIP Data Dashboard – developed online tools that consolidate information and allow users to develop their own stories





**Emily Trentacoste**  
[trentacoste.emily@epa.gov](mailto:trentacoste.emily@epa.gov)  
410-267-5797

