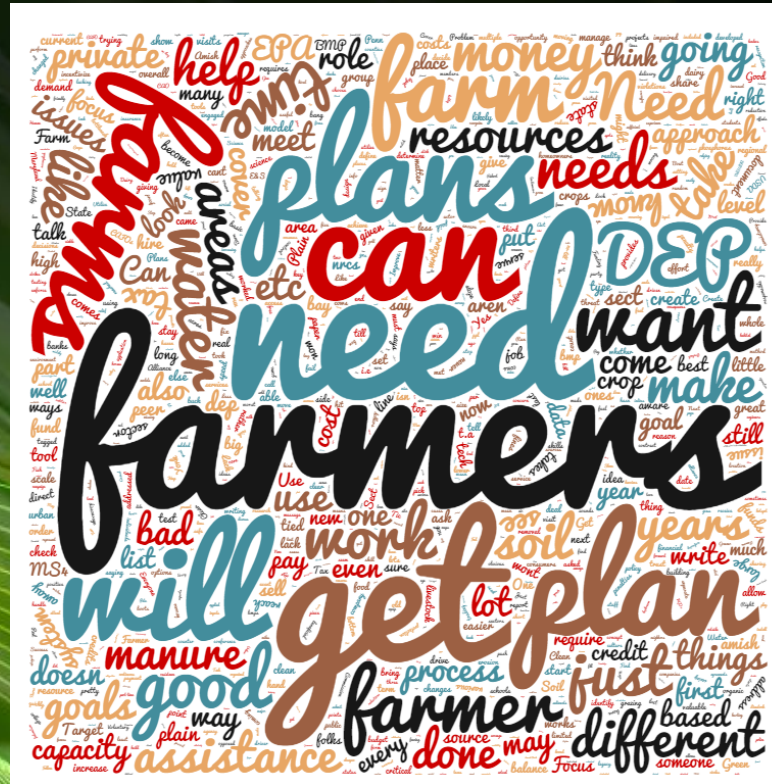


Emerging Priority Initiatives for Agriculture and Water Quality



Matt Royer
Director
Agriculture & Environment Center



PennState
College of Agricultural Sciences

Pennsylvania in the Balance Conference

March 1-3, 2016, Hershey PA

- Over 120 diverse stakeholders
- Collaborative forum to identify new and innovative solutions
- Dual goals:
 - Vibrant, productive agriculture
 - Clean water (PA streams and rivers, Chesapeake Bay)
- Clear themes and recommendations emerged which can form the basis of a new consensus based, collaborative strategy in PA



PennState
College of Agricultural Sciences

Pennsylvania in the Balance

Themes

1. Embrace a Culture of Stewardship
2. Develop and Deploy Effective Targeting
3. Integrate Soil Health, Manure Management, and Riparian Ecosystem Stewardship into Water Quality Strategies
4. Support Community Based Approaches
5. Recognize a Three Pronged Approach to Accelerating Conservation (education/outreach, TA, enforcement)
6. Revisit and Retool Conservation Incentive Programs
7. Collaboratively Seek New Funding Opportunities



PennState
College of Agricultural Sciences

PA in Balance: Framework for Implementation

- PA in Balance Council

Bill Angstadt, Angstadt Consulting
Rich Batiuk, EPA
Karl Brown, SCC
Harry Campbell, CBF
Denise Coleman, USDA NRCS
Matt Ehrhart, Stroud
Lara Fowler, Penn State
Jim Hershey, Hershey Farms
Nicki Kasi, DEP
Marel King, CBC
Peter Kleinman, USDA ARS
Patrick McDonnell, DEP

Bill Neilson, PA Farm Bureau
Russell Redding, PDA
Jennifer Reed Harry, PennAg
Jake Reilly, NFWF
Matt Royer, Penn State
Joel Rotz, PA Farm Bureau
Mary Seaton, Penn State
Brenda Shambaugh, PACD
Kelly Shenk, EPA
Jim Shortle, Penn State
Chris Thompson, LCCD

- Final conference report and webpage released March 2017
- Informal partner groups to lead four priority initiatives



PennState
College of Agricultural Sciences

Pennsylvania in Balance

Four Priority Initiatives

1. Increase technical capacity through enhancements in conservation training
2. Develop and disseminate a narrative around a culture of stewardship through soil and stream health
3. Develop new and creative incentives to encourage a high bar of conservation beyond compliance
4. Develop and deploy delivery mechanisms for accelerating conservation in priority watersheds



PennState
College of Agricultural Sciences

Increase Technical Capacity through Enhancements in Conservation Training

- PSU's Ag Stewardship and Conservation Certificate
- Exploring Thaddeus Stevens 2-year ag technician certificate program
- Ag E&S Manual development
- Extension trainings on MMPs and Ag E&S (PAOneStop)



PennState
College of Agricultural Sciences

Develop and Disseminate “Culture of Stewardship” Narrative through Soil and Stream Health

- New partnership around soil and stream health: PA No Till Alliance and Stroud Water Research Center
- PA in Balance Council to explore broad based narrative/communications strategy



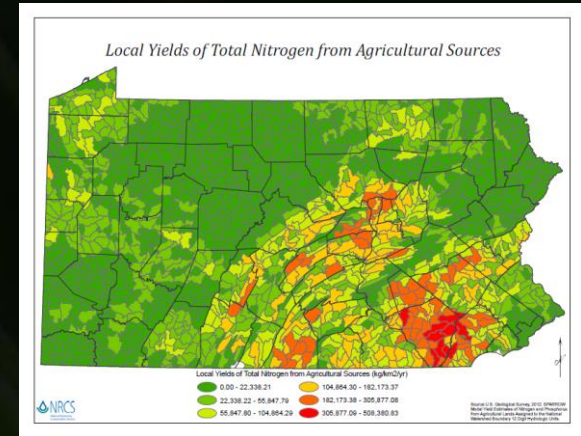
Photo by Shannon
Fretz Photography



PennState
College of Agricultural Sciences

Develop and Deploy Delivery Mechanisms for Accelerating Conservation in Priority Watersheds

- Focus conservation efforts and resources in high priority, high opportunity watersheds
 - High N/P/S loads, local impairments, local involvement
- Build delivery mechanisms and deliver variety of leveraged programs to implement priority BMPs in an accelerated, cost effective manner
- Presently being addressed through Phase 3 WIP process
- PA in Balance: Focus Lancaster



Map by PA NRCS



PennState
College of Agricultural Sciences

Other Relevant Penn State Efforts and Projects

- 2016 Farm Survey
 - Documented BMPs implemented and paid for by farmers voluntarily
- Developing methodologies for assessing implementation of nutrient use efficiency (aka supplemental nutrient management)
 - 2017 NFWF award to Mid-Atlantic 4R Stewardship Alliance
- PA in Balance “Focus Lancaster” and the Lancaster Clean Water Partnership
 - NFWF award to Conservation Foundation of Lancaster County
 - “Dairy Stewardship” collaborative extension team
 - Amish schools education on riparian buffers



PennState
College of Agricultural Sciences

Thank you!

Matt Royer

Director, Agriculture and Environment Center

111 Ferguson Building

University Park PA

mroyer@psu.edu

(814) 863-8756



PennState

College of Agricultural Sciences