



DEPARTMENT OF DEFENSE CHESAPEAKE BAY PROGRAM

Commander Navy Region, Mid-Atlantic
DoD Regional Environmental Coordination Office
Sarah Diebel

Chesapeake Bay Commission
Easton, Maryland



We Exist to Enable and Sustain Warfighter Readiness



Overview



- DoD Chesapeake Bay Program (CBP)
- DoD Watershed Footprint
- DoD Chesapeake Bay Investment Over Time
- Chesapeake Bay Commission Related Focus Areas
- Future Initiatives
- Questions





DoD Chesapeake Bay Program



- 1984 DoD formal partner in CBP
- Dept. Navy Lead Agent
- Navy Region Mid-Atlantic (NRMA) manages program
- Each service has its own CBP lead
- Executive Order 13508 and 2014 Chesapeake Bay Agreement
- Annual reporting to EPA and Bay States
- Raise program awareness



2 0 1 4

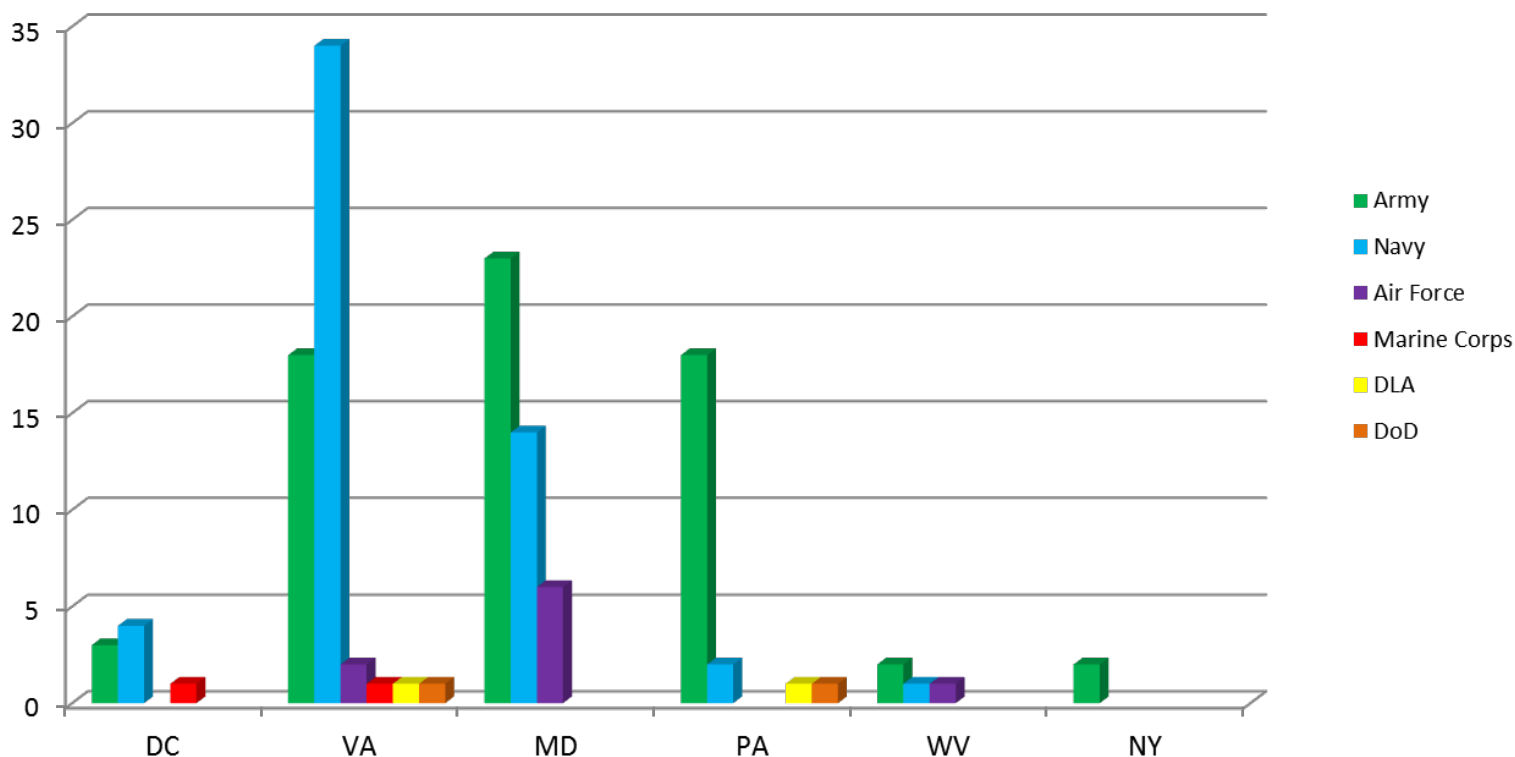


DoD Watershed Footprint



- DoD Services manage 136 sites/facilities & 368,927 acres
 - 1 % of watershed
 - 16 % of Federal footprint

DoD Facilities by Jurisdiction



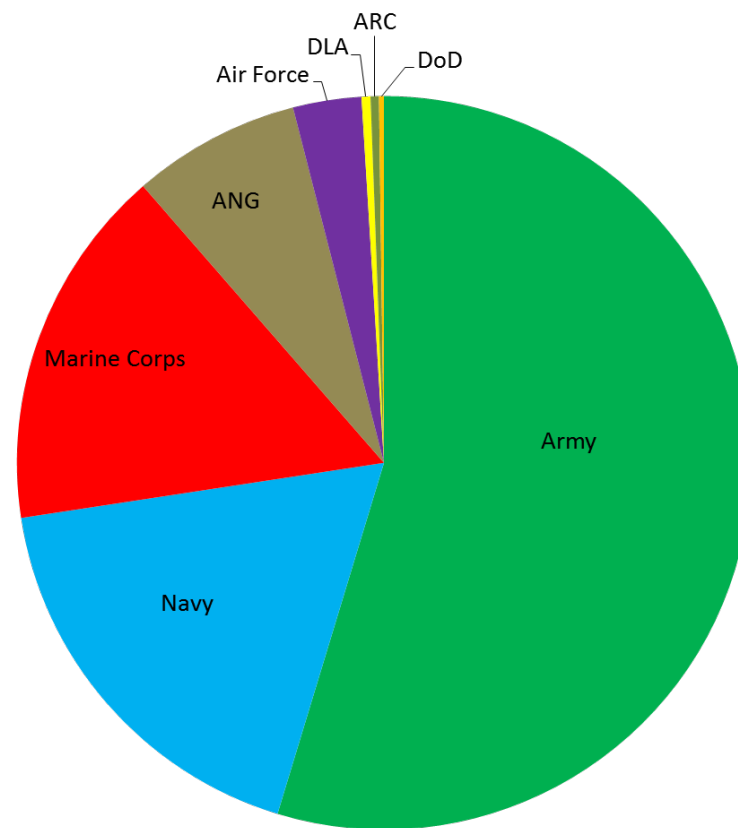
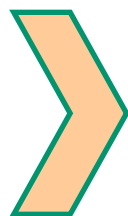


DoD Watershed Footprint

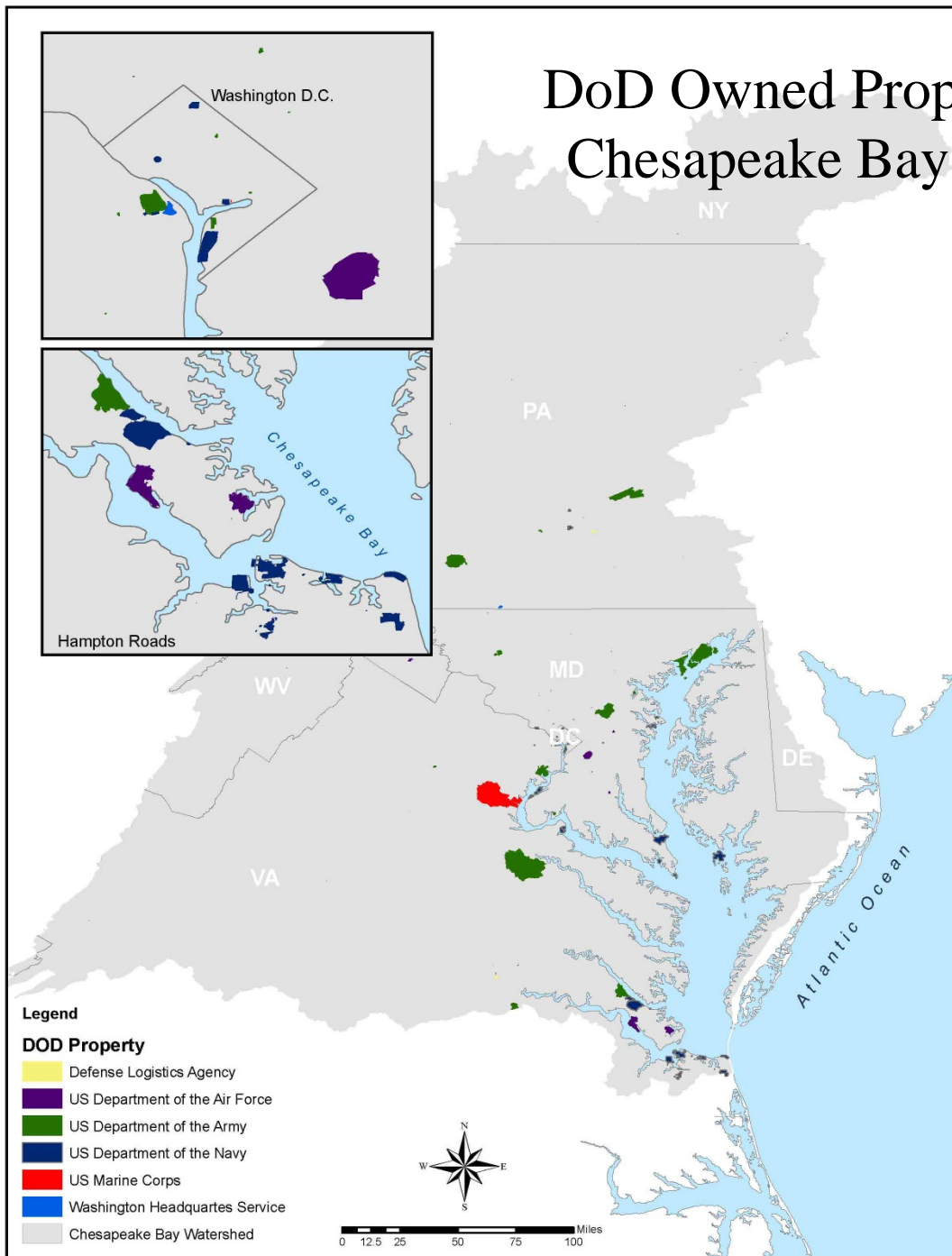


- DoD Services manage 136 sites/facilities & 368,927 acres
 - 1 % of watershed
 - 16 % of Federal footprint

DoD Acreage Distribution by Service	
Army	201,747
Navy	66,085
Marine Corps	59,064
Army National Guard (ANG)	27,312
Air Force	11,111
Defense Logistics Agency (DLA)	1,459
Army Reserve Centers (ARC)	1,340
DoD	809
Total	368,927



DoD Owned Properties in the Chesapeake Bay Watershed

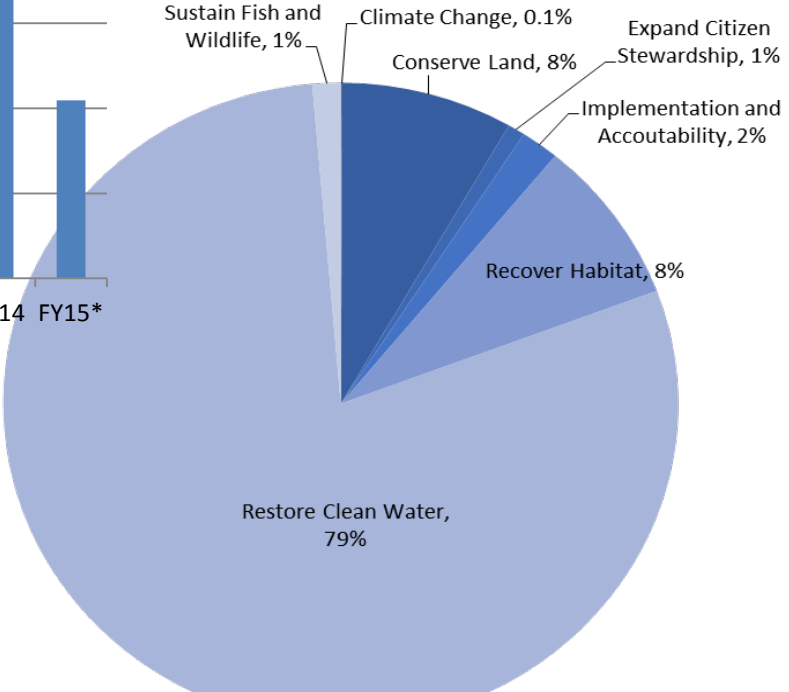
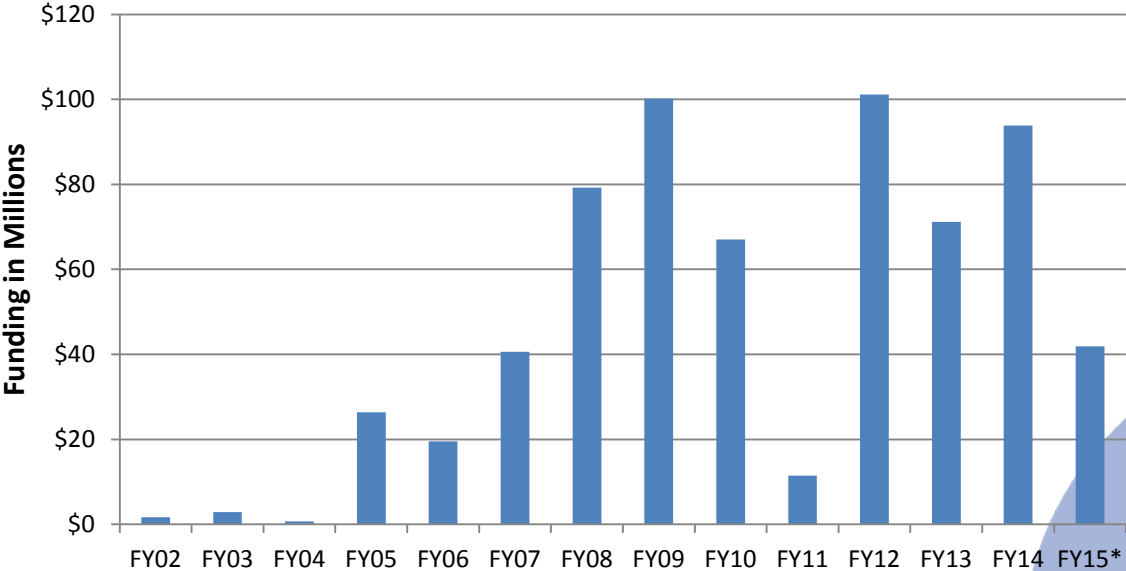




DoD Chesapeake Bay Investment Over Time



DoD Fiscal Year Chesapeake Bay Funding



FY11 - FY15 Funding Distribution by Goal



Focus Areas:

Chesapeake Bay Total Maximum Daily Load



- Programmatic and implementation based progress
 - Current stormwater regulatory requirements met and/or on-track
 - Completing CB TMDL pollution reduction plans
 - Federal Facilities Target Setting Protocol
 - Chair Federal Facilities Workgroup
 - Submitted land use data and historical best management practice data / continue to refine
 - Refining baseline loads and load reduction scenarios
 - Drafting concept designs
 - Construct, report, verify future best management practice (BMP) implementation





Focus Areas:

Livestock Stream Exclusion



- DoD concurs with the use of livestock stream exclusion
- DoD is not impacted or has already implemented stream exclusion into installation operations and lease agreements
- Proposed policy implemented during lease renewals





Focus Areas

Chesapeake Bay (CB) Land Conservation



- Opportunities to conserve priority landscapes around DoD installations
 - Ten installations in CB with active Readiness and Environmental Protection Integration (REPI) Program partnerships
 - Cost-share agreements with conservation organizations and federal, state and local governments

Installation	State	Acres Protected through 2014	Total Funds through 2014
Aberdeen Proving Ground	MD	163	\$1,481,994
Fort A.P. Hill	VA	11,317	\$33,478,110
Fort Indiantown Gap	PA	93	\$84,495
MCB Quantico	VA	417	\$3,009,500
Atlantic Test Range	MD	2,576	\$8,244,964
NAS Oceana	VA	2,141	\$24,804,017
NAS Patuxent River	MD	194	\$886,470
Total		16,901	\$71,989,550





Focus Areas

Stormwater Fees



- CWA Section 313 Amendments
 - Reasonable service charge
 - Service charges are not retroactive
- DoD Instruction / Policy
 - Seven criteria to determine reasonableness
 - Establishes process: receipt / review / negotiation / determination
- Top Issues
 - Bills need to reflect correct proportion of facility that discharges stormwater to locality MS4
 - Bills need to identify the proportion of the fees associated with benefit
 - Impervious surface area and properties must be appropriately assessed
 - Reduction credit or impervious surface area exemptions (e.g. roads) must be applied uniformly across billed entities

Reasonableness Criteria

- 1) Relate to control of water pollution
- 2) Be reasonable
- 3) Be non-discriminatory
- 4) Based on fair approximation of the facility's proportion of stormwater pollution
- 5) Measured in quantities of pollutants or volume / rate of stormwater discharge
- 6) Be used to pay or reimburse costs associated with stormwater management program
- 7) May include range of programmatic and structural costs



Challenges



- Funding
 - DoD budget to sustain mission readiness is constrained
 - Significant compliance costs projected \$10M-\$20M/yr and BMP operation and maintenance projected \$5K/yr/BMP
 - Difficult to implement projects without regulatory requirement
 - Three to five year lead time to request projects
- Chesapeake Bay TMDL
 - 2017 Mid-point Assessment and EPA evaluation of DoD progress
 - Phase III Watershed Implementation Plans
 - Reporting coordination with Bay jurisdictions



Future Initiatives



- Enhance collaborative efforts within CBP Partnership
 - Outreach, partnering and stewardship activities
 - Support improvement of modeling tools
- Bay TMDL Implementation
 - Support development of Phase III WIPs
 - Utilize planning and scenario tools
 - Comply with stormwater permits
 - Develop programmatic and implementation 2-year water quality milestones for 16/17
 - Report annual progress
- FY16 REPI Chesapeake Bay installation requests



Questions

