

A photograph of a row of young, green trees planted in a field. The trees are in the foreground, and a dense forest of taller trees is in the background. The scene is brightly lit, suggesting a sunny day.

Agricultural Issues and Recommendations from the Citizens Advisory Committee



STROUD™ WATER RESEARCH CENTER

Independent not-for-profit
Research and Environmental Education Center



Mission

STROUD™ WATER
RESEARCH CENTER

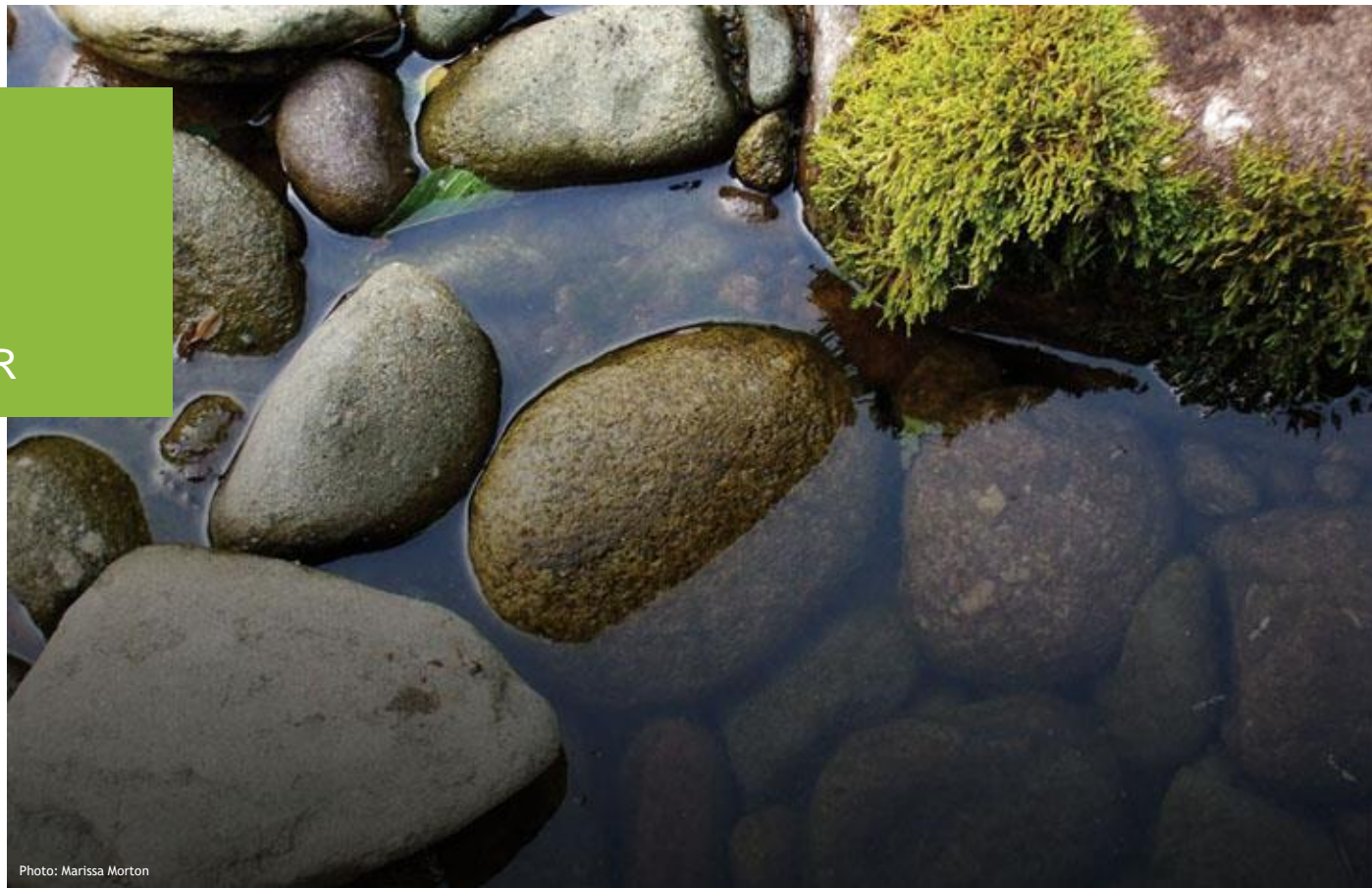


Photo: Marissa Morton

To advance global knowledge and stewardship of
fresh water through research and education

Freshwater

IS OUR FOCUS



Photo: David Arscott

Multi disciplinary and collaborative research:

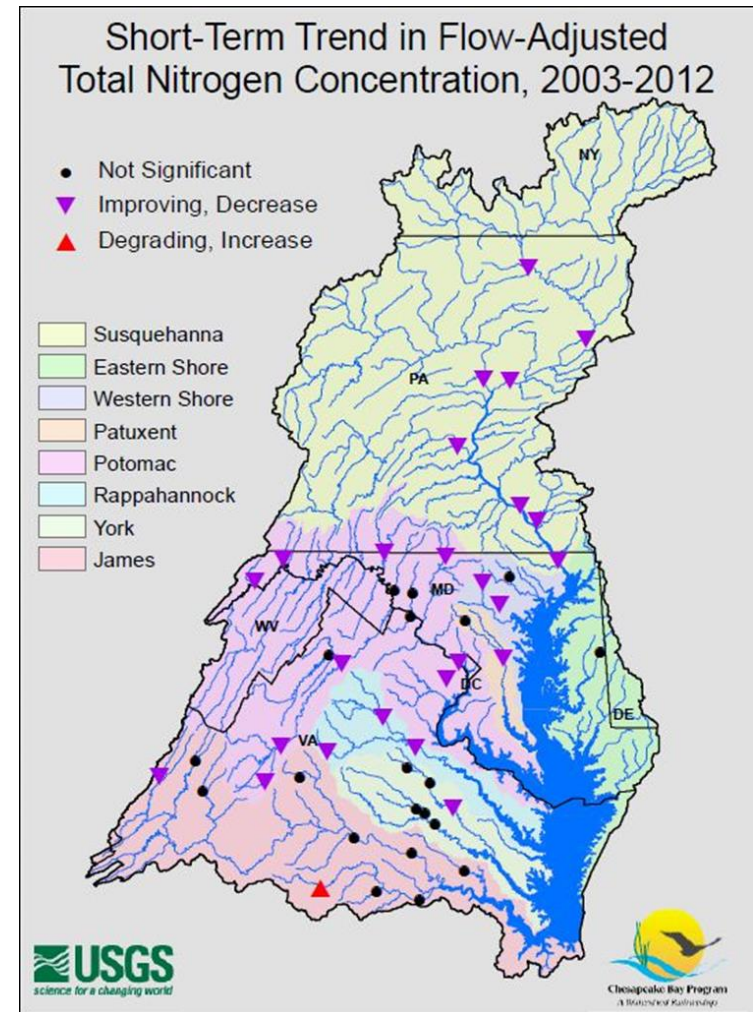
- Fisheries
- Entomology
- Microbiology
- Biogeochemistry
- Isotope Geochemistry
- Hydrology & Geomorphology
- Ecosystem Modeling
- Environmental Education



??? Modeling vs. Monitoring ???

**Status of Trajectory Towards Achieving 2017 Interim Targets:
Nitrogen**

	Agriculture	Wastewater	Stormwater	Septic	Overall
Delaware	Yellow	Green	Red	Red	Green
District	White	Green	Red	White	Green
Maryland	Red	Yellow	Red	Red	Red
New York	Red	Red	Red	Red	Red
Pennsylvania	Red	Green	Red	Red	Red
Virginia	Green	Green	Red	Red	Green
West Virginia	Green	Green	Red	Green	Green



Phase III WIP - Sector Equity





Untracked BMPs



Capital Infrastructure Needs



Manure Transport Issues



Thank You!

Healthy Livestock, Healthy Streams

Policy Actions To
Promote Livestock
Stream Exclusion

A REPORT OF THE
CHESAPEAKE BAY COMMISSION
MAY 2015



STROUD
WATER RESEARCH CENTER

Thank You!

Healthy Livestock, Healthy Streams

Policy Actions To
Promote Livestock
Stream Exclusion

A REPORT OF THE
CHESAPEAKE BAY COMMISSION
MAY 2015



But....

We encourage you to continue your
support for forest buffers



STROUD

STROUD[™]
WATER RESEARCH CENTER



Conservation Reserve Enhancement Program (CREP)

And

Riparian Forest Buffer Initiative

And

State Task Force Process



Does The Executive Order Matter?



Matthew J. Ehrhart
Director of Watershed Restoration
Stroud Water Research Center

mehrhart@stroudcenter.org
610 268 2153 ext 308