

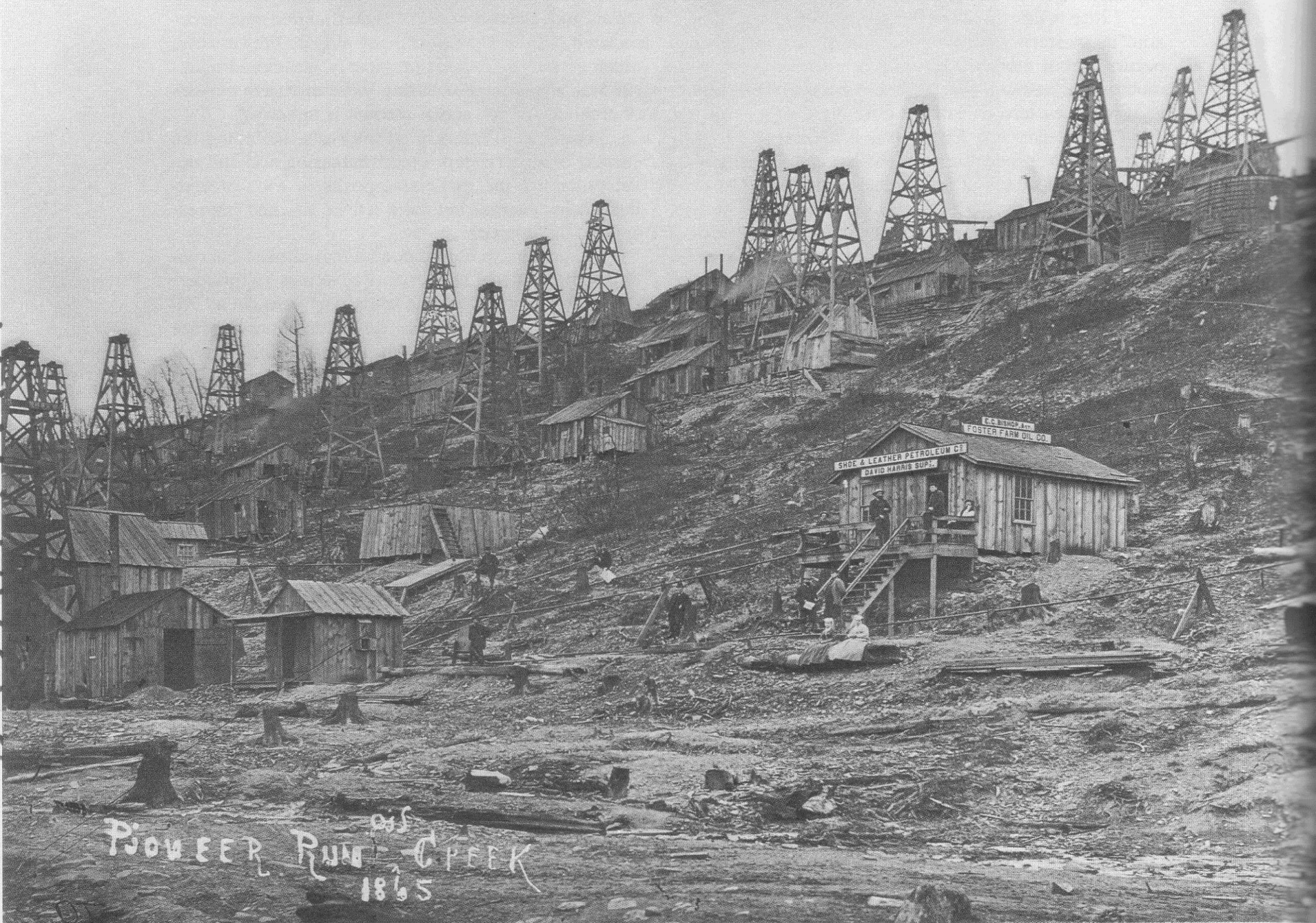


Oil and Gas Management

***Environmental Protection and
Unconventional Shale Well Development
in the Commonwealth of Pennsylvania
Chesapeake Bay Commission November 6, 2014***

DEP Mission

“To protect Pennsylvania’s air, land and water from pollution and to provide for the health and safety of its citizens through a cleaner environment. We will work as partners with individuals, organizations, governments and businesses to prevent pollution and restore our natural resources.”

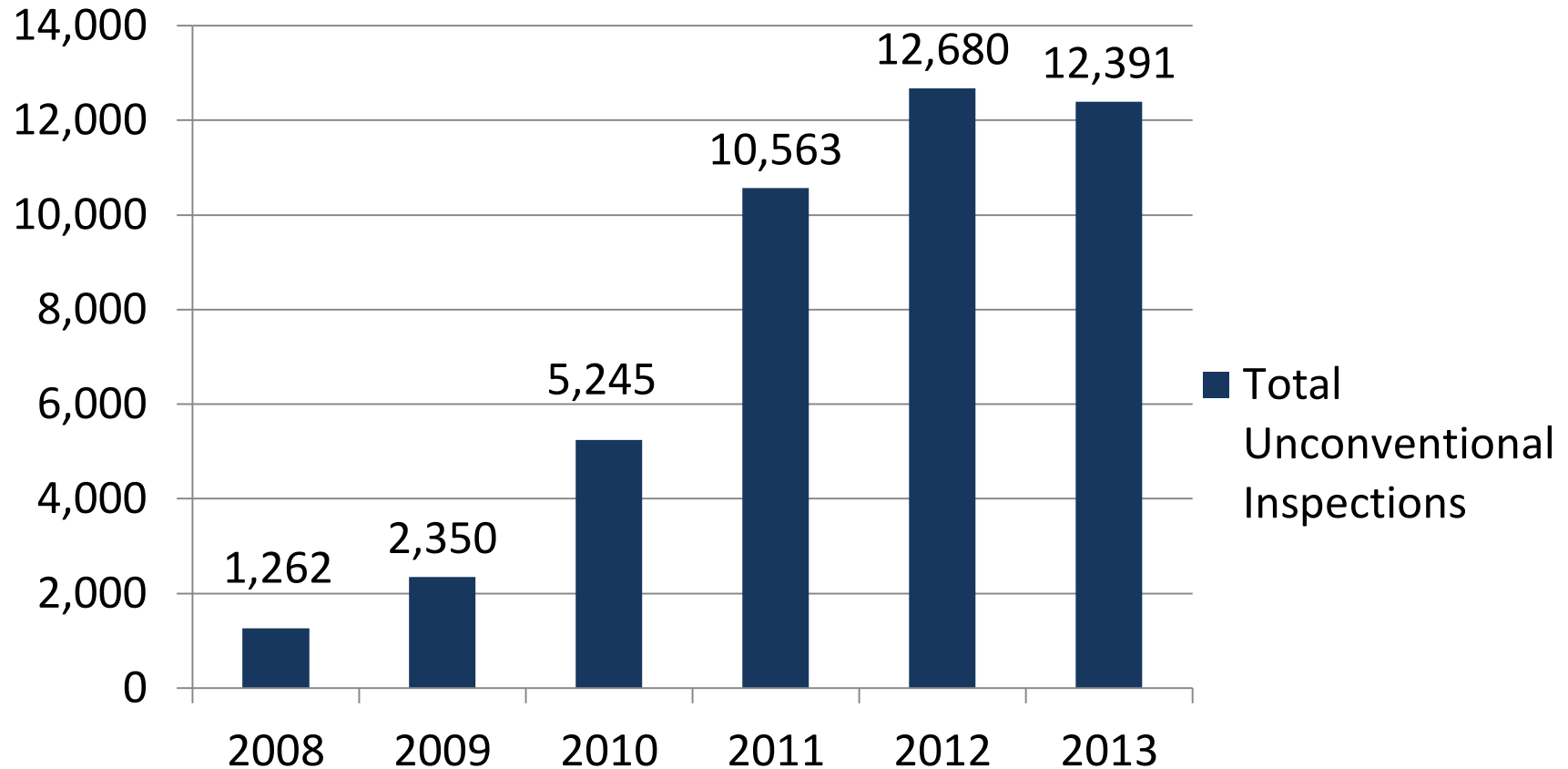


POWELL RUN CREEK
1865



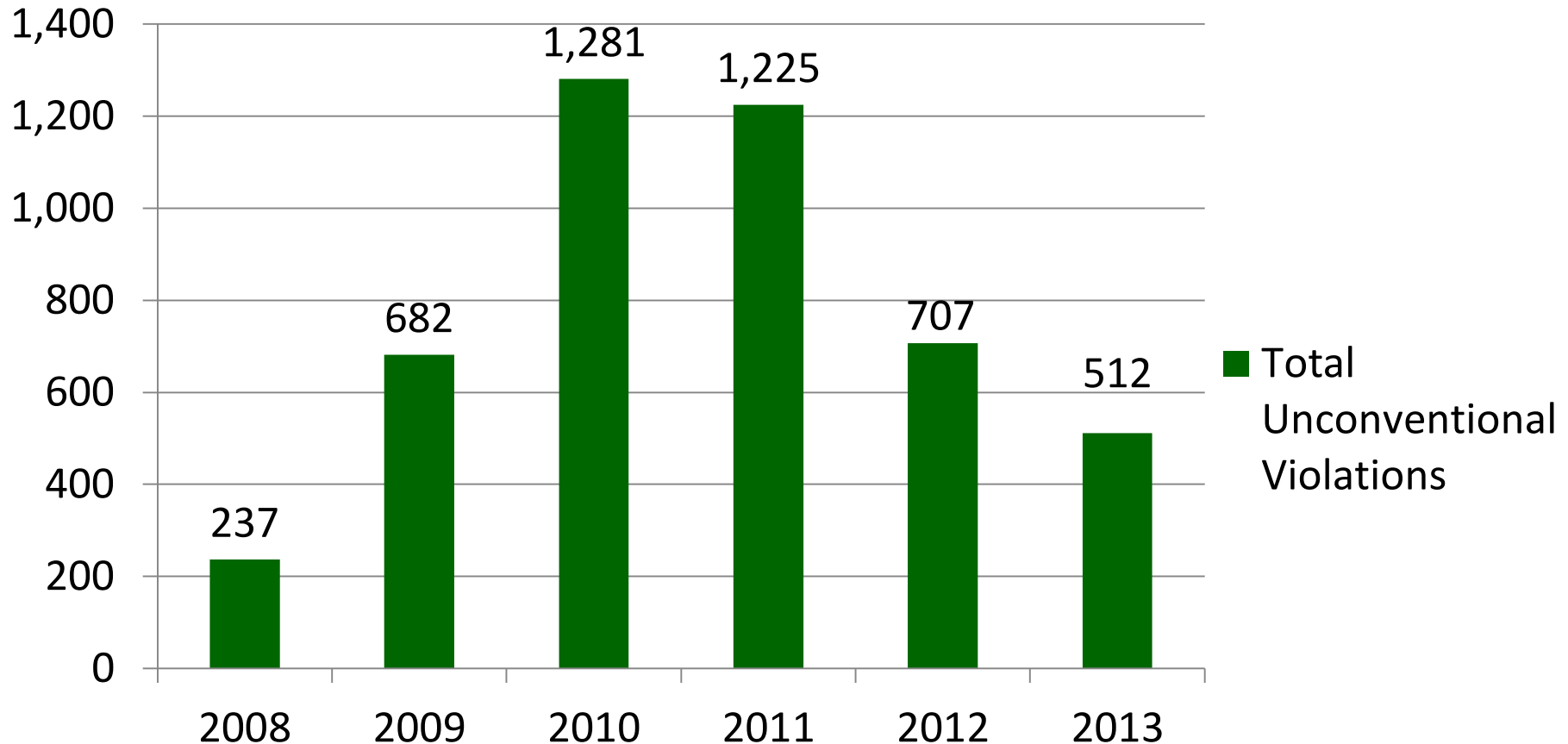
Inspections 2008-2013

Total Unconventional Inspections

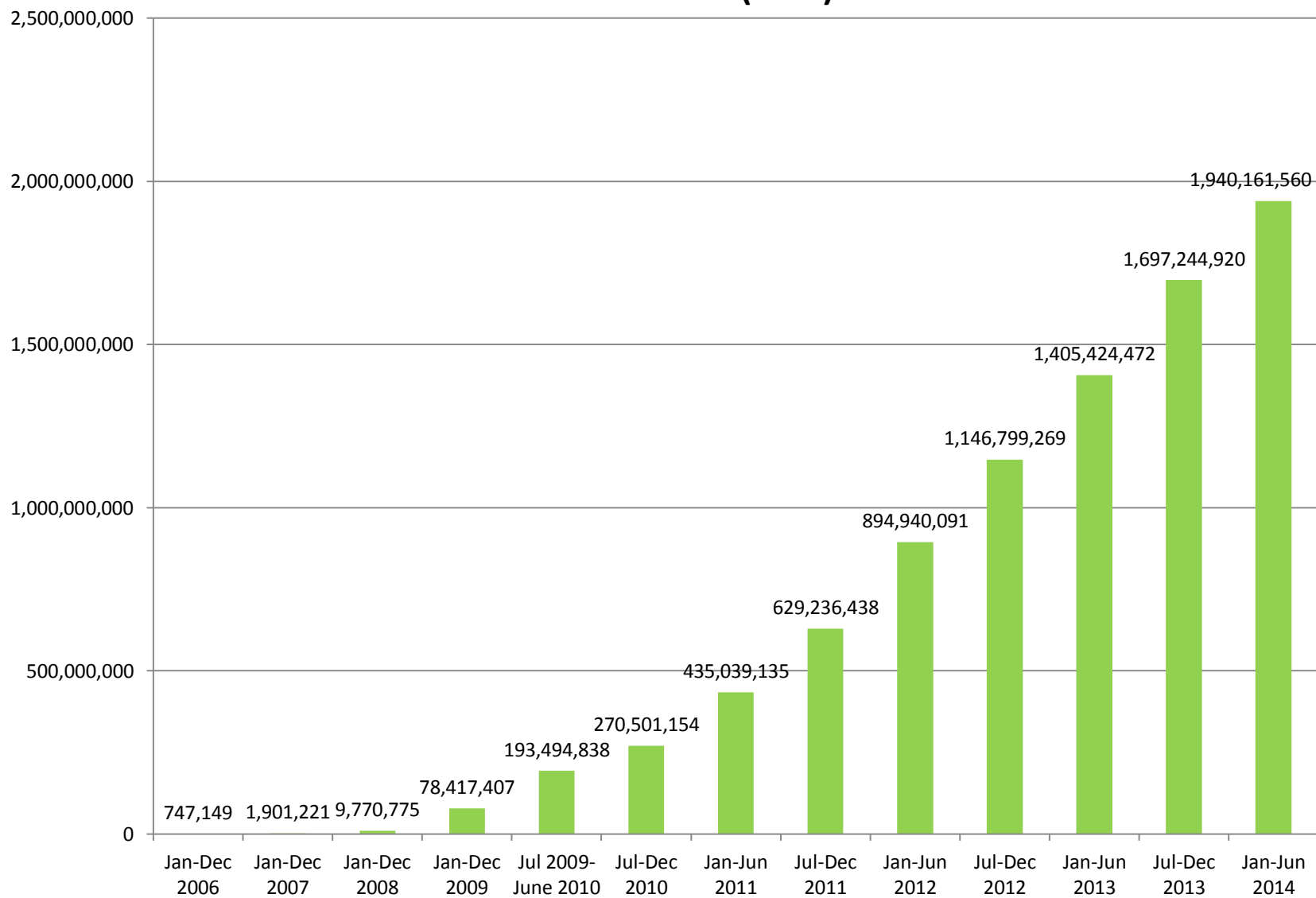


Violations 2008-2013

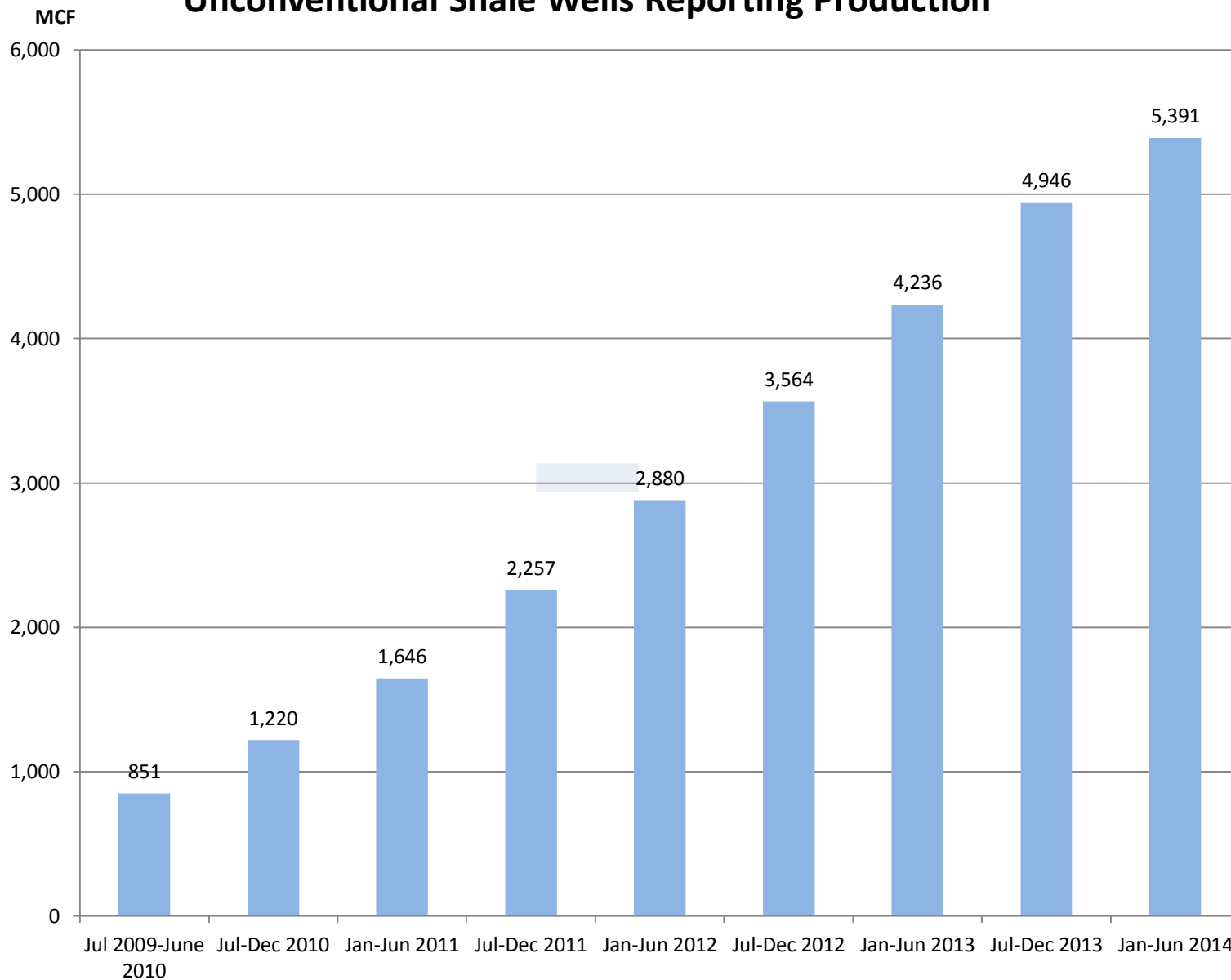
Total Unconventional Violations



Unconventional Shale Wells Gas Production (MCF)

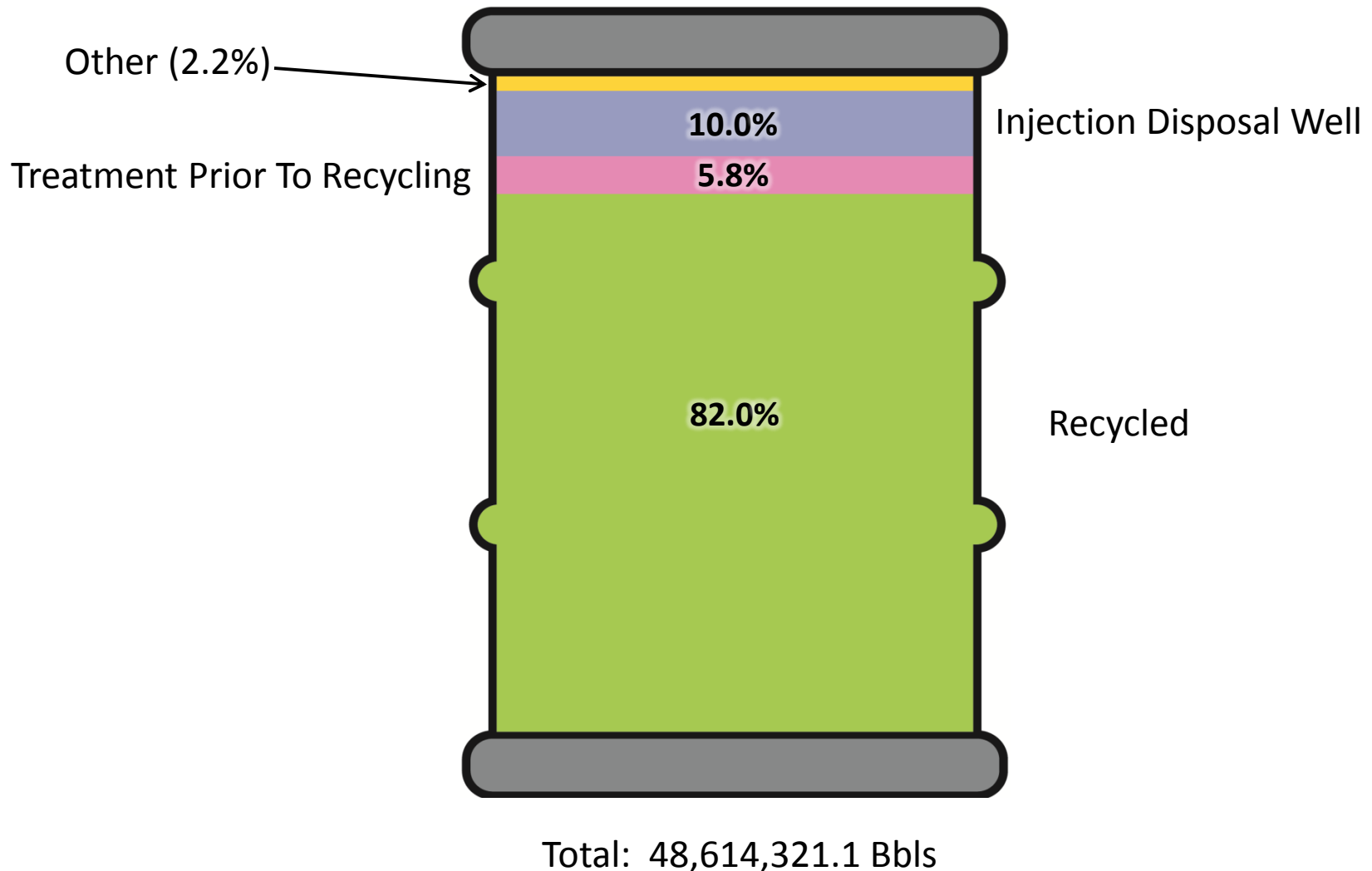


Unconventional Shale Wells Reporting Production



Unconventional Shale Well

2013 – 2014 (Jan-Jun) Liquid Waste Summary



DEP Initiatives

- Safety – MIA, Emergency Planning, Fees
- Health – TENORM, Spills and Air Quality
- Environment – ESCGP2 and Policy
- Administrative – GIS, eWELL

Surface Activities Proposed Rule

- Conventional Wells
- Protection of Public Resources
- Water Supply Restoration
- Pre-Stimulation Abandoned Well Survey
- Waste Management Issues



pennsylvania
DEPARTMENT OF ENVIRONMENTAL PROTECTION

Oil and Gas Management



Scott Perry
scperry@pa.gov