



# Conservation Workforce Development Programs

Living Classrooms of the National  
Capital Region

May 5, 2023

# Living Classrooms of the National Capital Region



- Workforce development, community programs, environmental education
- LC-NCR supports Anacostia River communities in DC Wards 5-8
- Experiential learning in authentic contexts



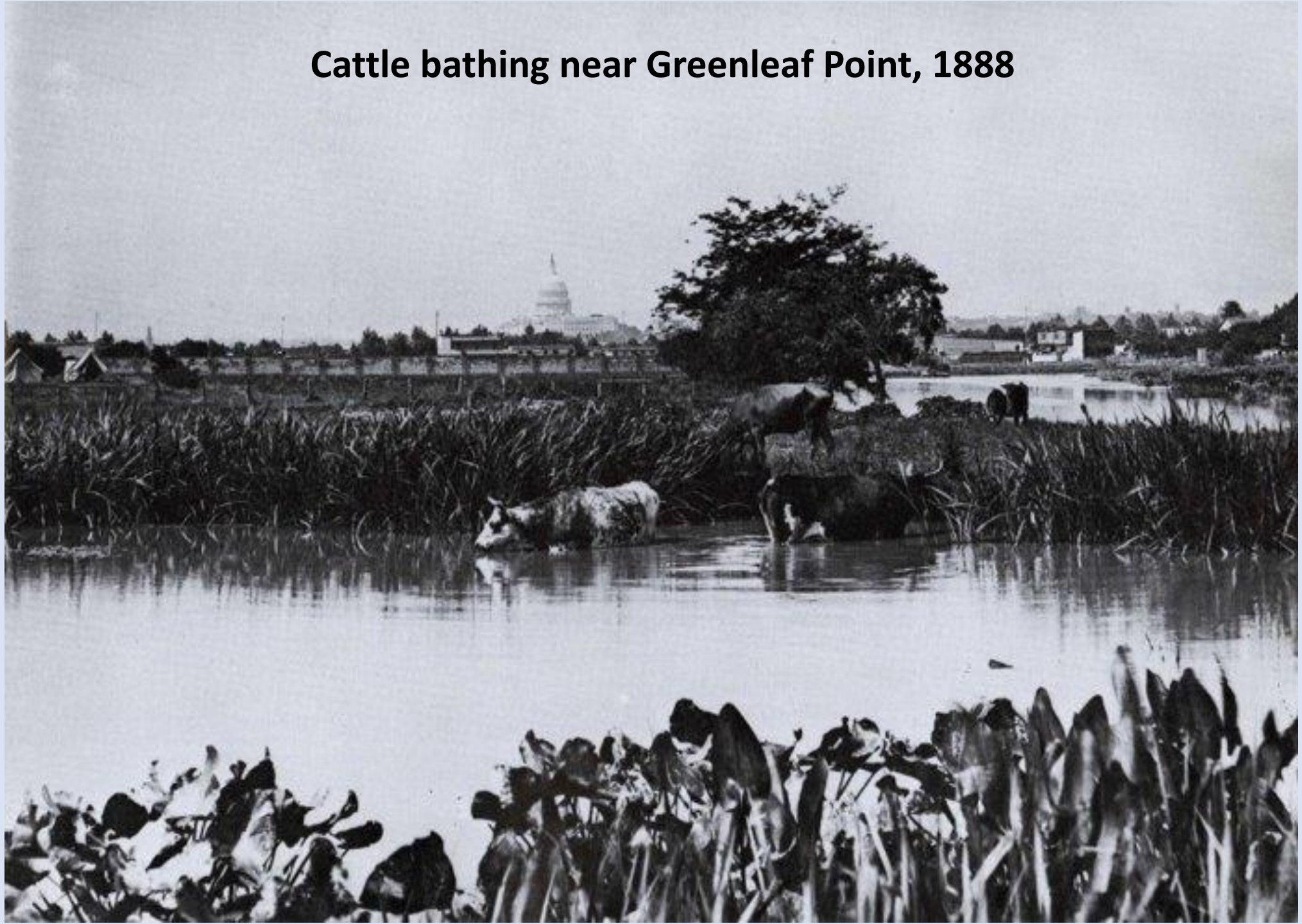
# Anacostia Past and Present



*East Branch of  
Potomac R. Washington.*

1839

**Cattle bathing near Greenleaf Point, 1888**





## Incineration at Kenilworth Landfill, 1967

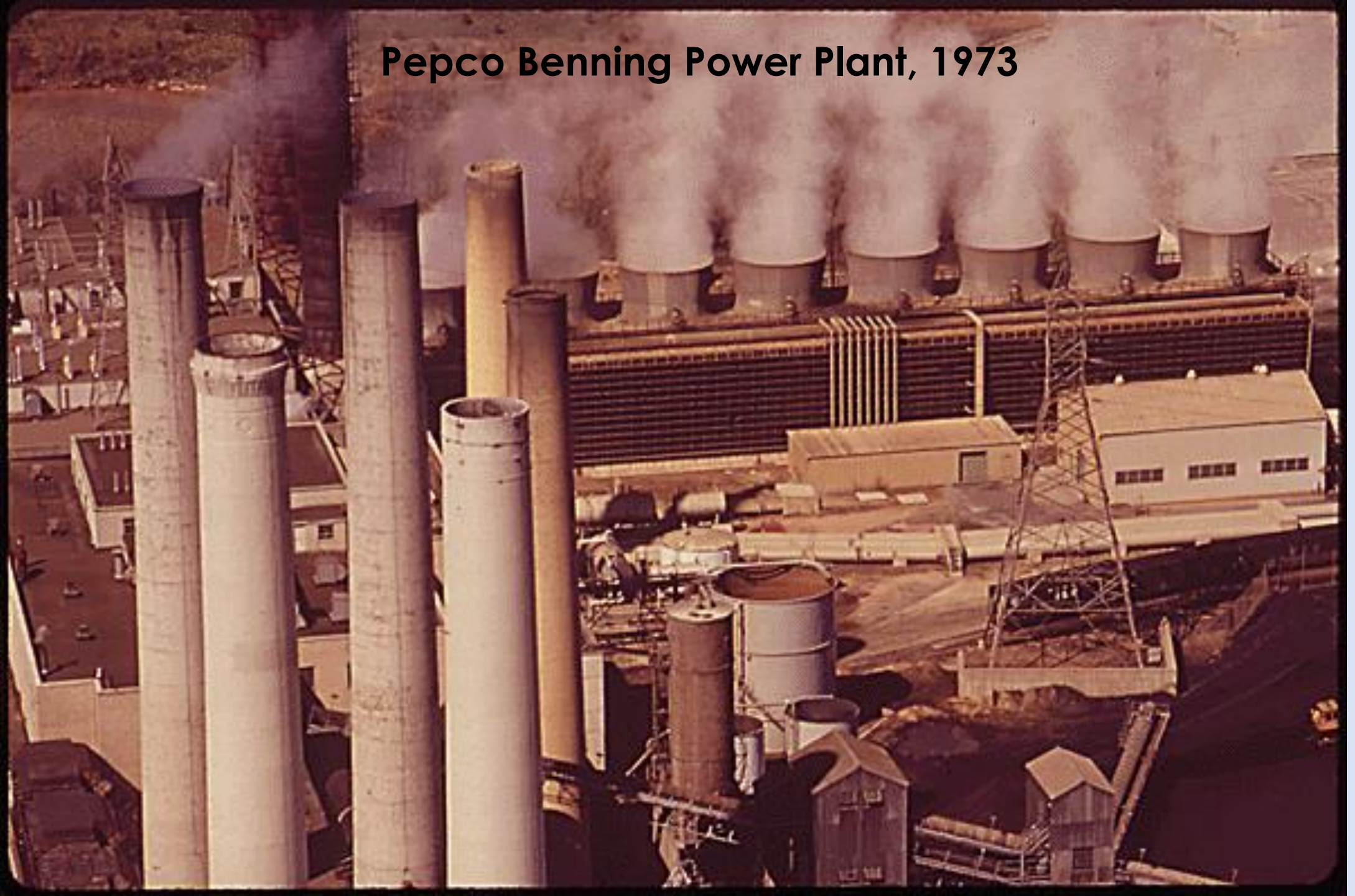


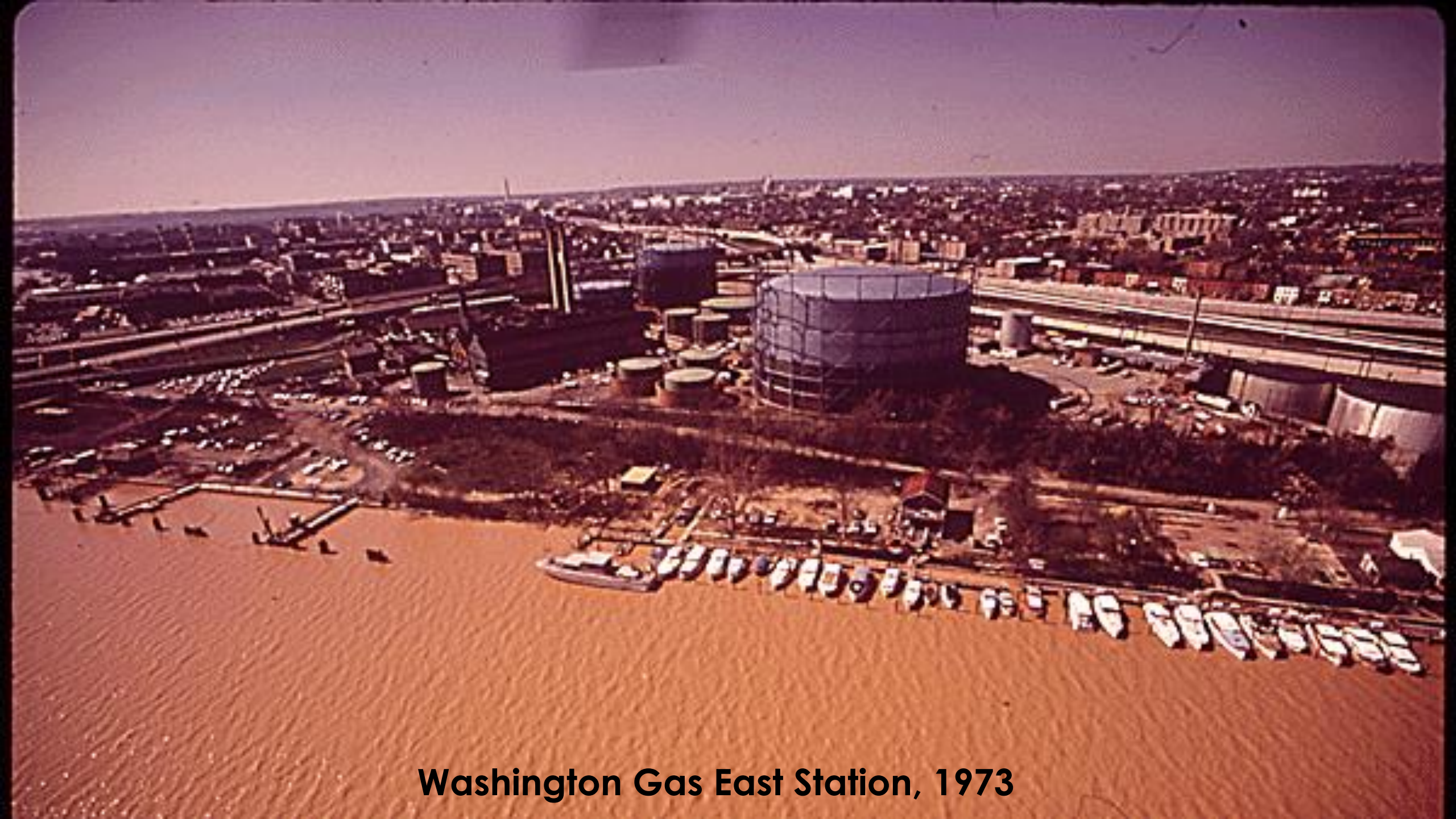


**Landfill Operations at Kingman Island, 1967**



**Pepco Benning Power Plant, 1973**





**Washington Gas East Station, 1973**

Naval Gun Factory, Washington Navy Yard, 1917









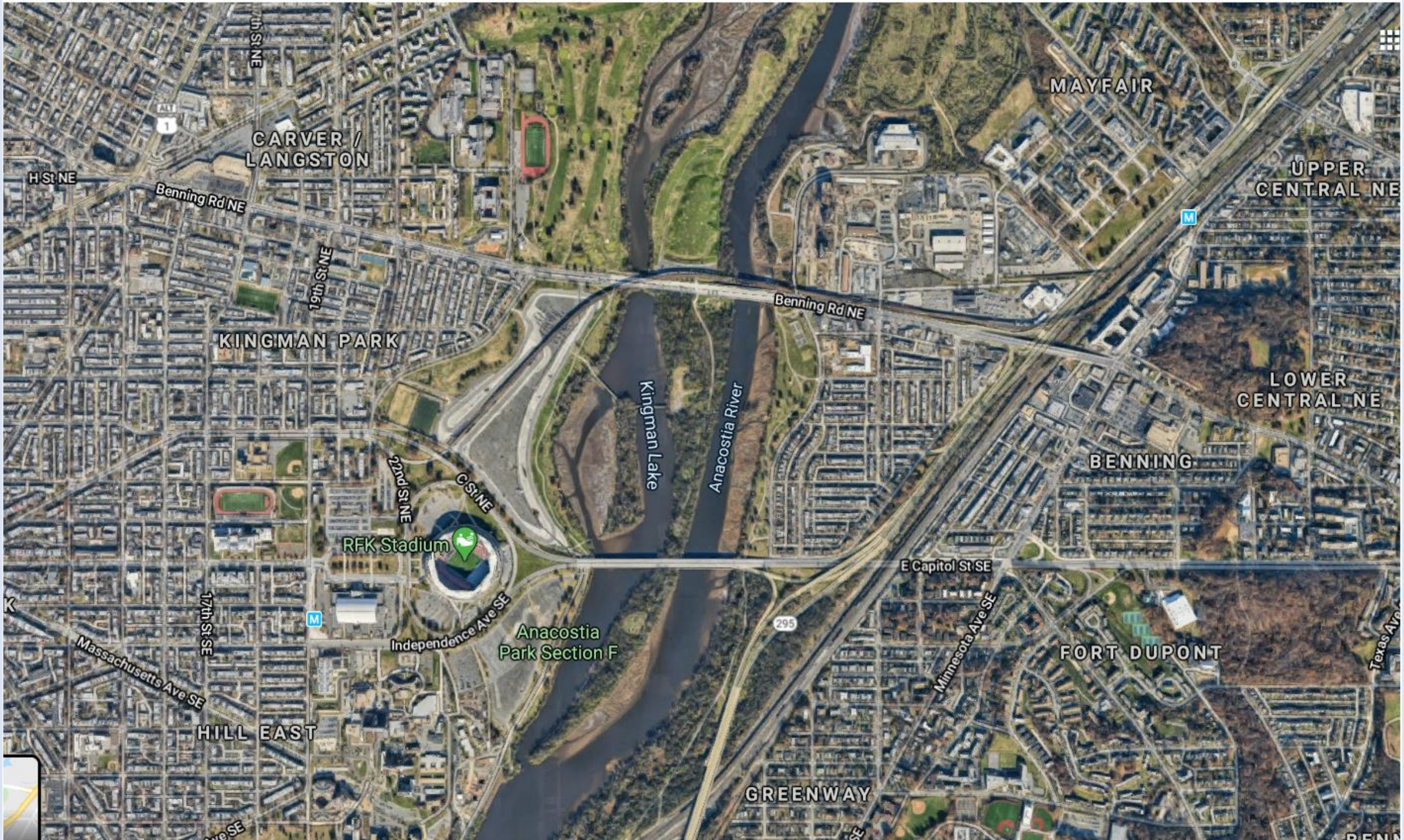
# Our Workforce Continuum

School → SYEP → Workforce Cohorts → Seasonals → FT Rangers

# Kingman and Heritage Islands

- Conservation Area owned by DC DOEE, managed by LC-NCR
- Created by 1916 USACE dredging project
- 2018 designated State Conservation Area and Critical Wildlife Refuge by Mayor Bowser







# High School Environmental Education

- Funded by NOAA Bay Watershed Education and Training (B-WET) grant
- Meaningful Watershed Education Experiences (MWEE)
- 5 session locally focused project-based learning
- Stormwater runoff focused
- How healthy is our river and how can we help our river?





# Junior Rangers

- Partner with DOES Summer Youth Employment Program and DOEE
- 6 week program, 20 hours a week
- Work with Rangers, Environmental Educators, and Workforce staff
- Focus on
  - Environmental Education
  - Watershed Conservation
  - Maintenance and Facilities
  - Outdoor Recreation
  - College and Career Readiness



# Responsibilities and Training in:

- Plant Identification and Plant Removal
- Clearing and cleaning trails and public spaces
- Minor landscaping and construction projects using hand tools
- Boat handling, safety, maintenance, and paddling
- Clearing trash and learning to sort and weight it to collect and report data
- Conservation ethics and plant and animal life on the islands
- Local history of the Anacostia River and Kingman and Heritage Islands
- Visitor Services and Program Facilitation
- Environmental Education

























# Full Time Rangers

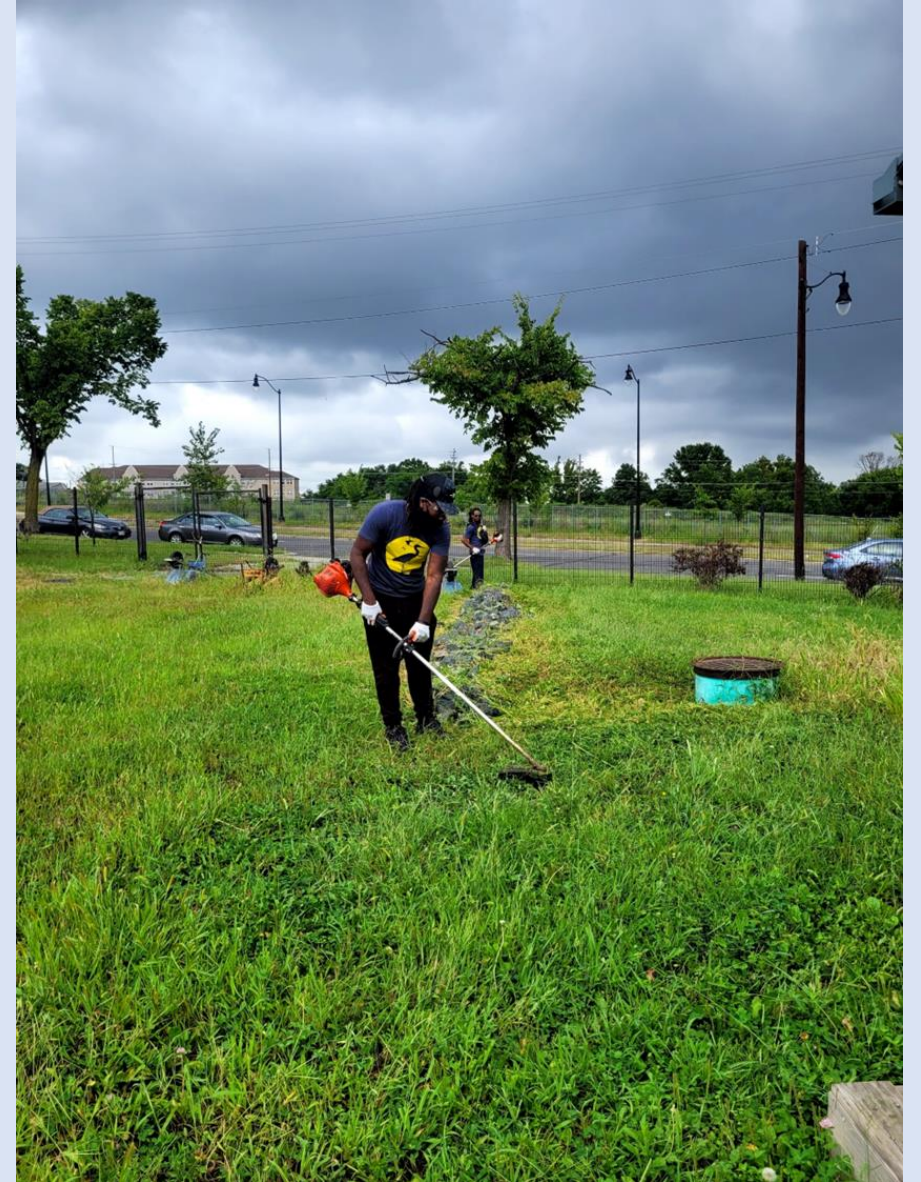
- Partnership with DOEE and DDOT
- 3 Full time Rangers and a Rangers & Facilities Manager
- Duties:
  - Ambassadors/Guides
  - Construction Projects
  - Mowing/Cutting
  - Trail maintenance
  - Bathrooms/Trash
  - Invasives removal
  - Maintain Trash Cage
  - Facilitate public programs, Green Boats, and field trips
  - Supervise Jr and Seasonal Rangers
  - Community outreach/recruitment





# Seasonal Rangers

- Partnership with DOES/  
Project Empowerment
- 18 Week Program
- Trainings:
  - Low Impact Development
  - Green Infrastructure  
Certification
  - Tool Handling
  - HRA
  - Chesapeake Bay Landscape  
Professional
  - First Aid/CPR
  - OSHA-10























# Next Steps for Participants

- Bi-weekly case management after program completion
- Mid season hiring fair for seasonal Ranger with Green Jobs hiring partners
- LCF is in early stages of pipeline creation with govt. agencies and local partners

Reactions,  
suggestions,  
or questions?

**Contact information:**

[jturvey@livingclassroomsdc.org](mailto:jturvey@livingclassroomsdc.org)

[www.livingclassrooms.org](http://www.livingclassrooms.org)

[www.kingmanisland.com](http://www.kingmanisland.com)

