

January 5, 2023

2025 and Beyond *Today – Tomorrow – and Always*



*Dr. Kandis Boyd
Director, Chesapeake Bay Program Office
U.S. Environmental Protection Agency*

Our Vision

An environmentally and economically sustainable Chesapeake Bay watershed with clean water, abundant life, conserved lands and access to the water, a vibrant cultural heritage, and a diversity of engaged citizens and stakeholders.



Chesapeake Bay Program
Science. Restoration. Partnership.



TODAY: Achievements—Bay Restoration

The Chesapeake Bay Program Partnership



NY



DC



VA



MD



PA



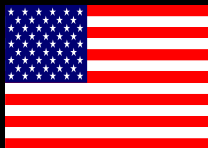
DE



WV



Bay
Commission



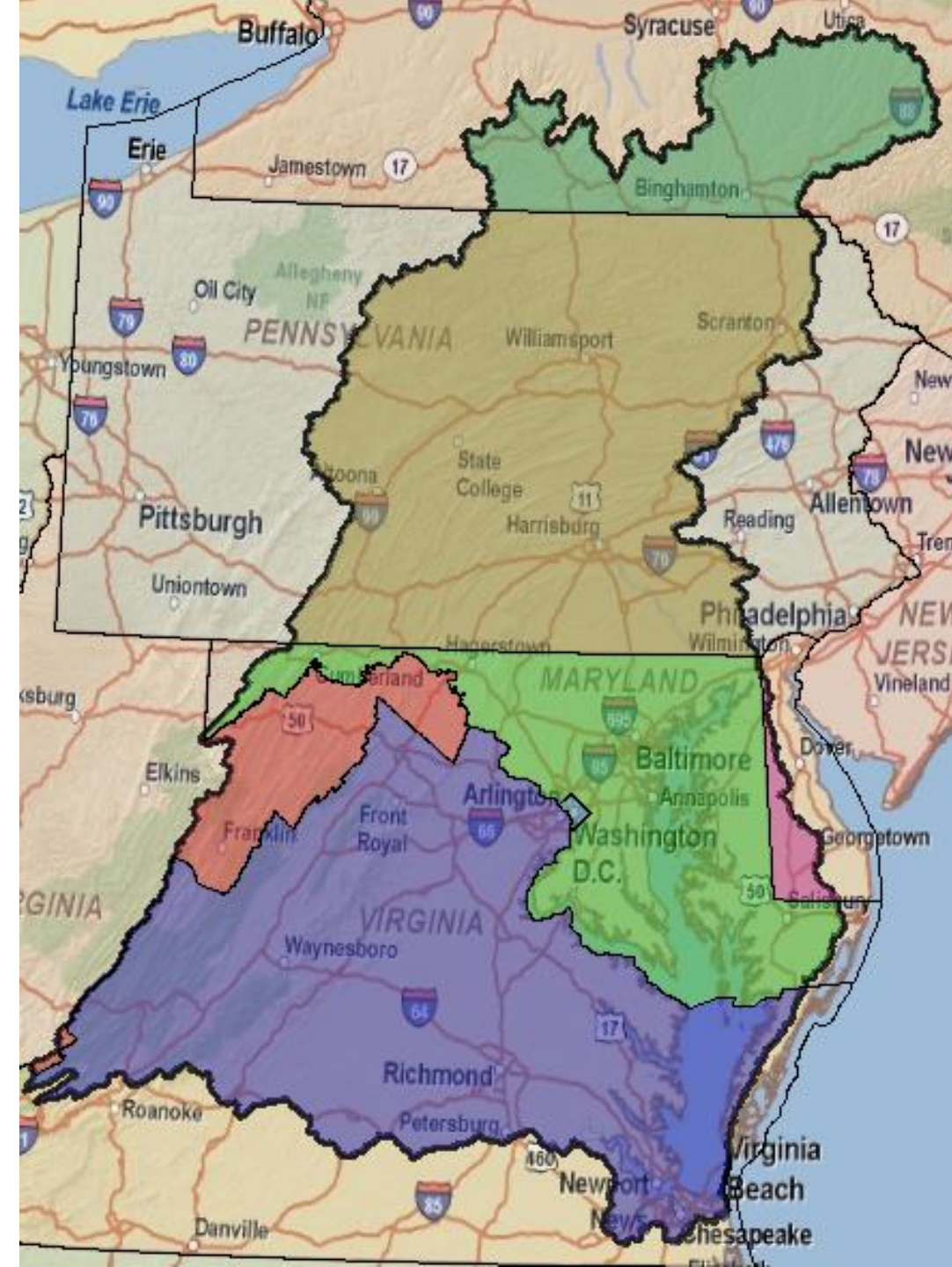
Federal
partners



Chesapeake Bay Program

The Chesapeake Bay Program (CBP) is a regional partnership devoted to restoring and protecting the Chesapeake Bay and its watershed.

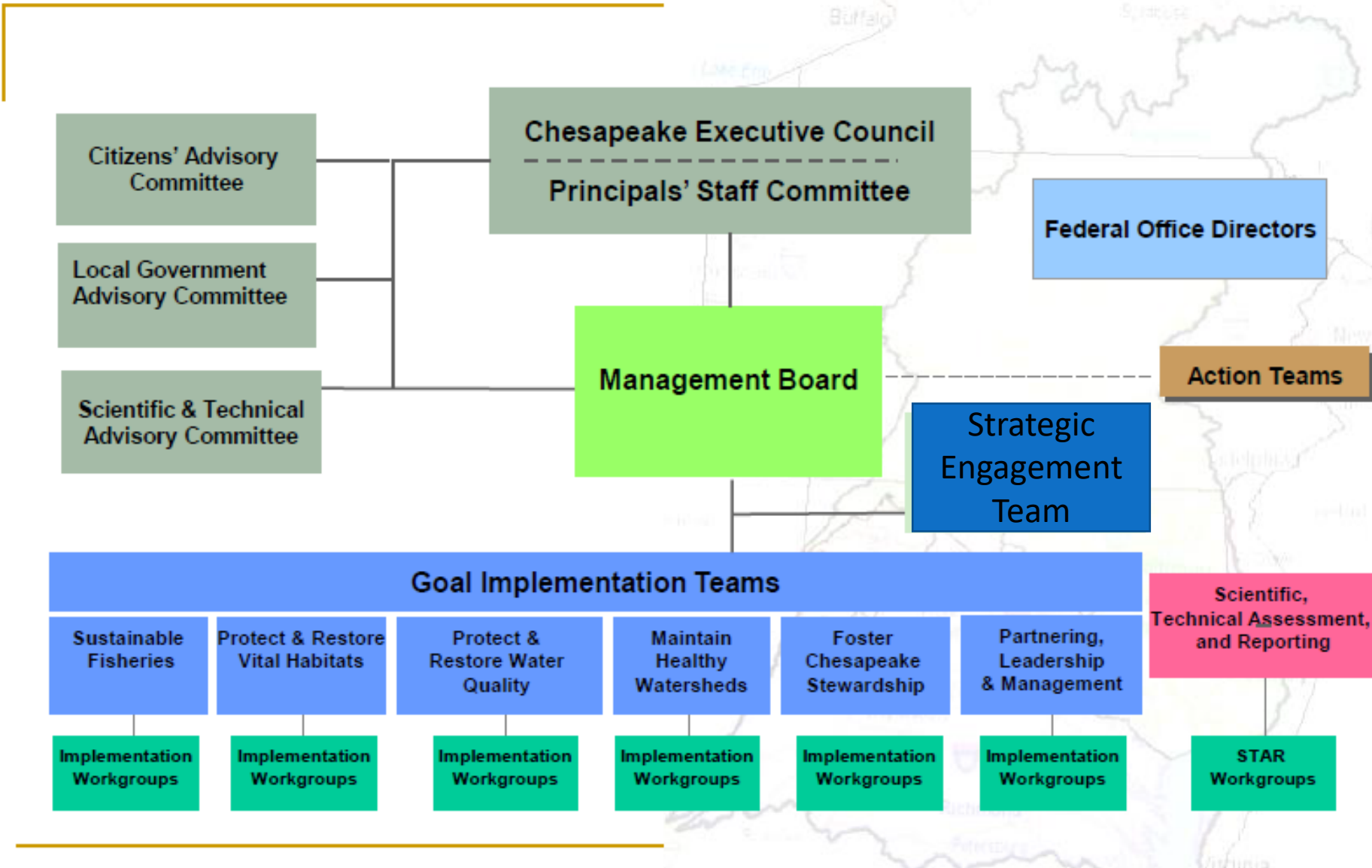
- Nearly 40 agencies and programs in Delaware, District of Columbia, Maryland, New York, Pennsylvania, Virginia, and West Virginia
- 19 federal agencies
- More than 1,800 local governments
- More than 20 academic institutions
- More than 60 non-governmental organizations, including businesses, non-profits & advocacy groups.



Science. Restoration. Partnership.



Chesapeake Bay Program Structure



Our 10 Goals from the 2014 *Chesapeake Bay Watershed Agreement*



1. Sustainable Fisheries



2. Vital Habitats



3. Water Quality



4. Toxic Contaminants



5. Healthy Watersheds



6. Stewardship



7. Land Conservation



8. Public Access



9. Environmental Literacy



10. Climate Resiliency

<https://www.chesapeakeprogress.com>



TOMORROW:
Challenges

Our 10 Goals from the 2014 Chesapeake Bay Watershed Agreement



1. Sustainable Fisheries



2. Vital Habitats



3. Water Quality



4. Toxic Contaminants



5. Healthy Watersheds



6. Stewardship

Reduce pollutants to achieve the water quality necessary to support aquatic living resources and protect human health.



9. Environmental Literacy



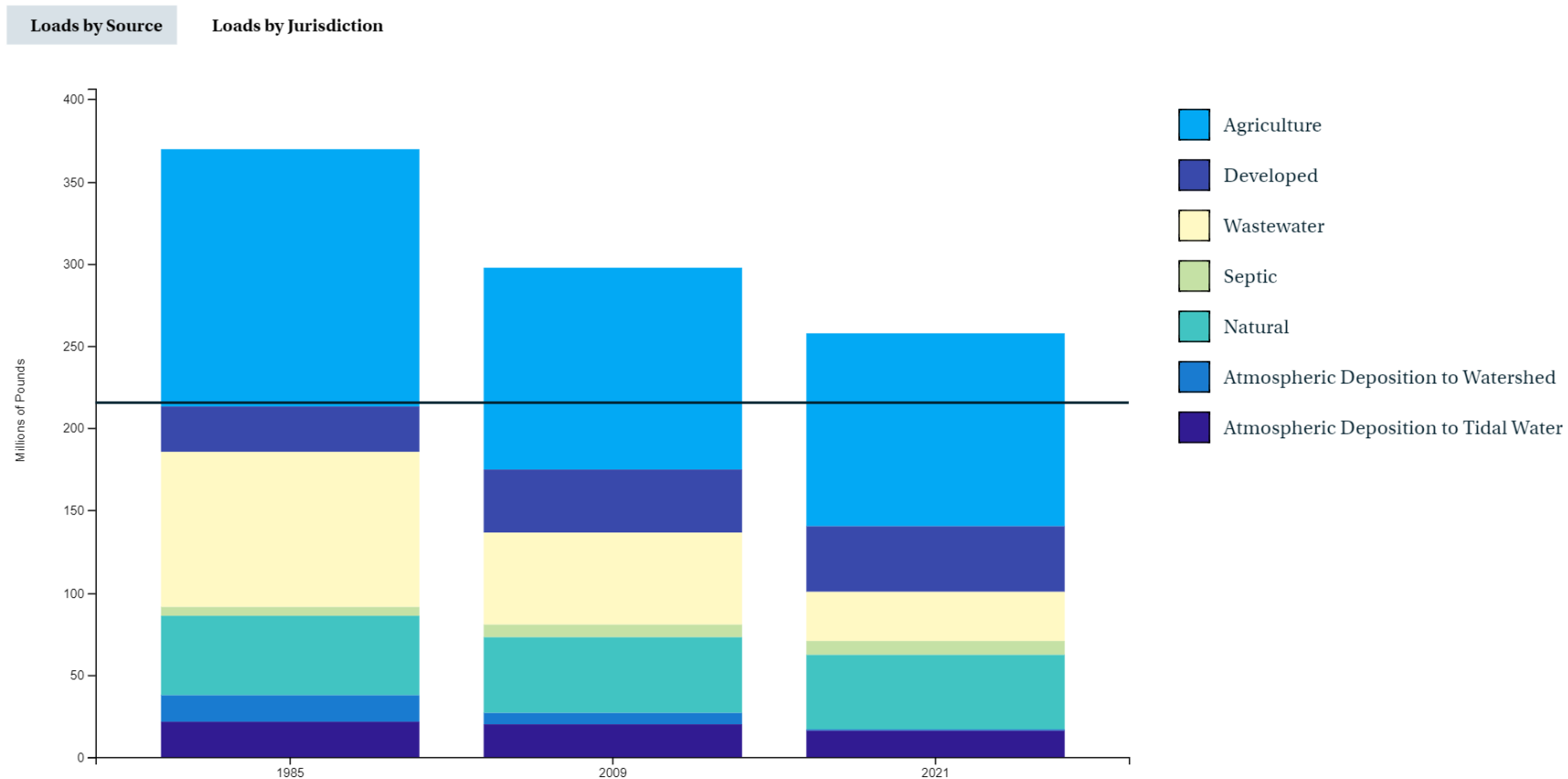
10. Climate Resiliency

Nitrogen Reductions – Where are We Now?

Modeled Nitrogen Loads to the Chesapeake Bay (1985-2021) ▲

Loads simulated using CAST19 and jurisdiction-reported data on wastewater discharges. *The natural sector includes, in part, forests and wetlands which are preferable land use types with the lowest loading rates among sources.

[VIEW CHART](#) [VIEW TABLE](#)



Nitrogen Reductions – Where are We Now?

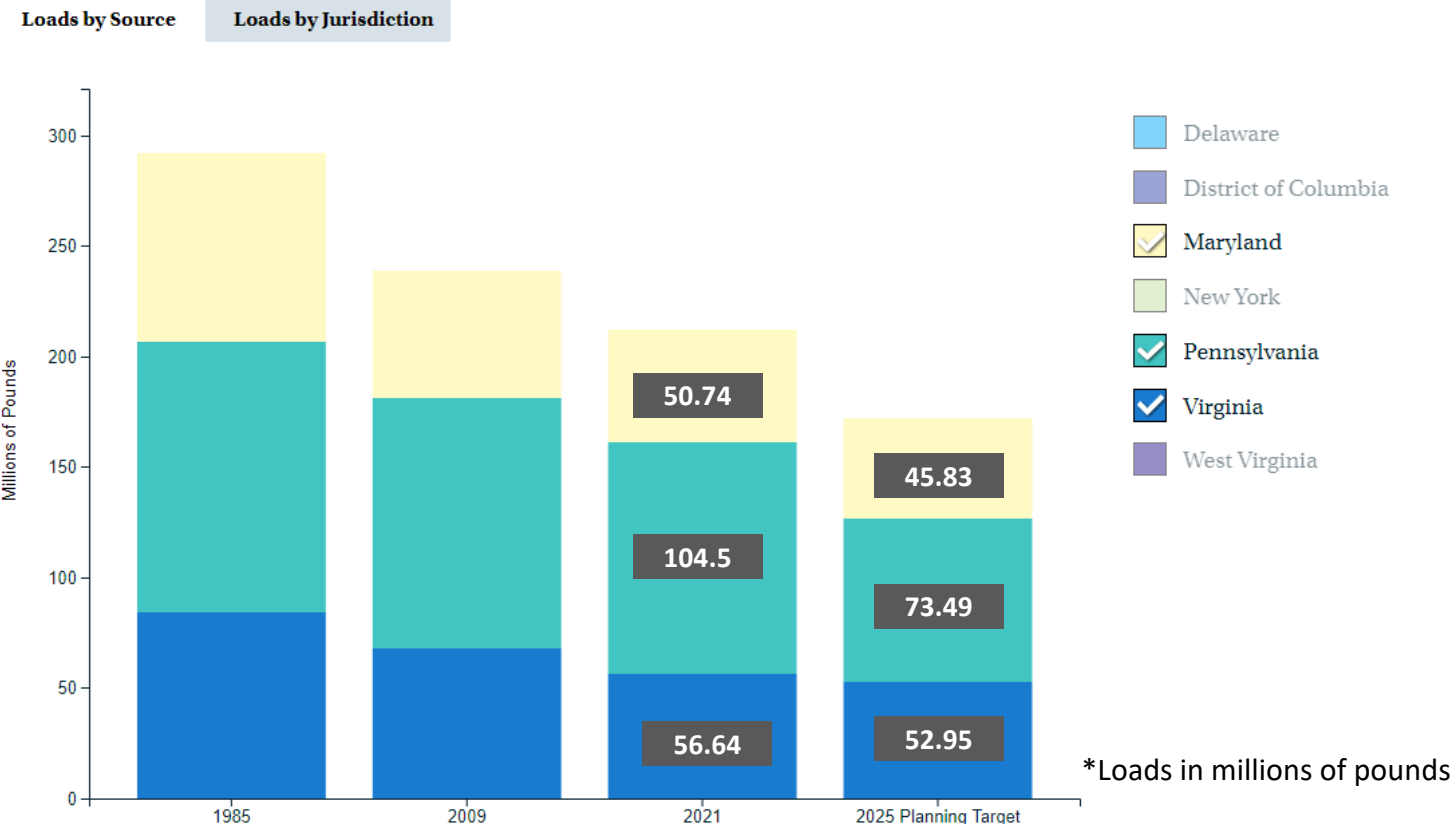
Modeled Nitrogen Loads to the Chesapeake Bay (1985-2021)

Loads simulated using CAST19 and jurisdiction-reported data on wastewater discharges. *The natural sector includes, in part, forests and wetlands which are preferable land use types with the lowest loading rates among sources.

[VIEW CHART](#) [VIEW TABLE](#)

Loads by Jurisdiction

Jurisdiction	Source	Percent Progress Toward 2025 Goals (>=80% is on track)	
		Nitrogen	Phosphorus
PA	AllSources	22%	48%
MD	AllSources	58%	74%
VA	AllSources	75%	68%
All 7 Jurisdictions	AllSources	42%	64%



Phosphorous Reductions – Where are We Now?

Modeled Phosphorus Loads to the Chesapeake Bay (1985-2021)

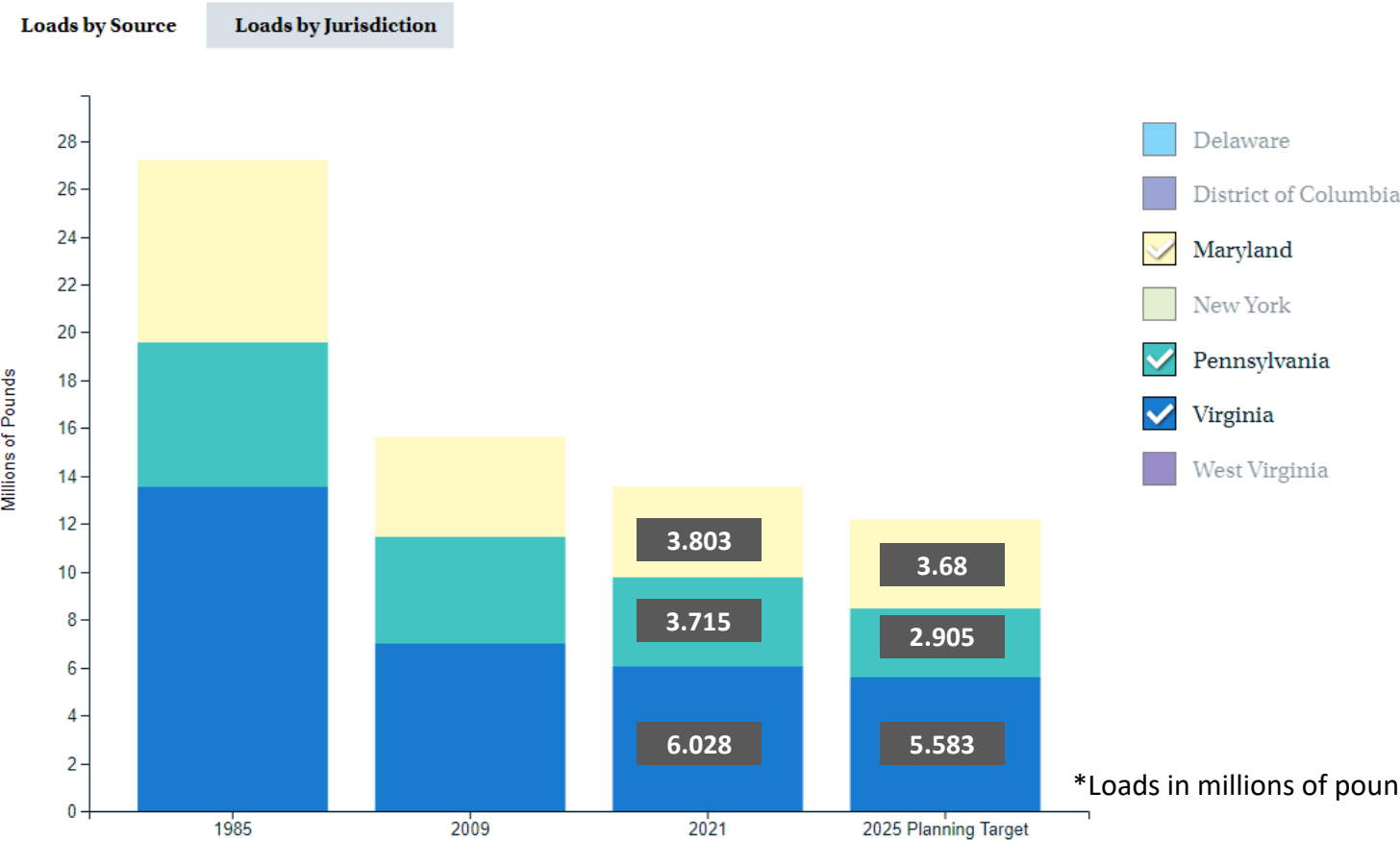
Loads simulated using CAST19 and jurisdiction-reported data on wastewater discharges. *The natural sector includes, in part, forests and wetlands which are preferable land use types with the lowest loading rates among sources.

[VIEW CHART](#) [VIEW TABLE](#)

Loads by Jurisdiction

Jurisdiction	Source	Percent Progress Toward 2025 Goals (>=80% is on track)	
		Nitrogen	Phosphorus
PA	AllSources	22%	48%
MD	AllSources	58%	74%
VA	AllSources	75%	68%
All 7 Jurisdictions	AllSources	42%	64%

Sediment Goal: 100%





ALWAYS:
Partnership: A Path Forward



EC CHARGE TO PSC

By the 2023 and 2024 Executive Council meetings, develop and prioritize next steps and recommendations for meeting the goals and outcomes of the 2014 Chesapeake Bay Watershed Agreement leading up to and beyond 2025



Thank you!

Dr. Kandis Boyd, Director, Chesapeake Bay Program

boyd.kandis@epa.gov



Chesapeake Bay Program
Science. Restoration. Partnership.



Chesapeake Bay Program
Science. Restoration. Partnership.

