



REPI UNITED STATES DEPARTMENT OF DEFENSE READINESS AND ENVIRONMENTAL PROTECTION INTEGRATION PROGRAM

The REPI Program: Partnerships for Conservation, Resilience and Readiness

Kristin Thomasgard

REPI Program Director

Office of the Assistant Secretary of Defense (Sustainment)

Chesapeake Bay Commission

2 January 2020

SUSTAINING

Military Mission Capabilities

THROUGH

INNOVATIVE

Land Protection Solutions

The Department of Defense's Readiness and Environmental Protection Integration (REPI) Program is a key tool for promoting innovative and land conservation partnerships that benefit national defense, neighboring communities and the environment.

Parachute training is halted when housing developments are built near drop sites



80% of military bases have surrounding development that is higher than the national average

Realistic combat training, pristine test environments, and operational capability are keys to keeping our service members safe. However, encroachment issues are creating obstacles that threaten military activities.



Flight testing, training, and operations are impeded by cellphone towers, wind farms, and developments

Weapons testing and training causes noise, dust, and smoke complaints from nearby communities

Urban sprawl decreases habitat and may cause Federally protected species to seek sanctuary on military lands

Night training is compromised when light pollution from nearby commercial areas spreads



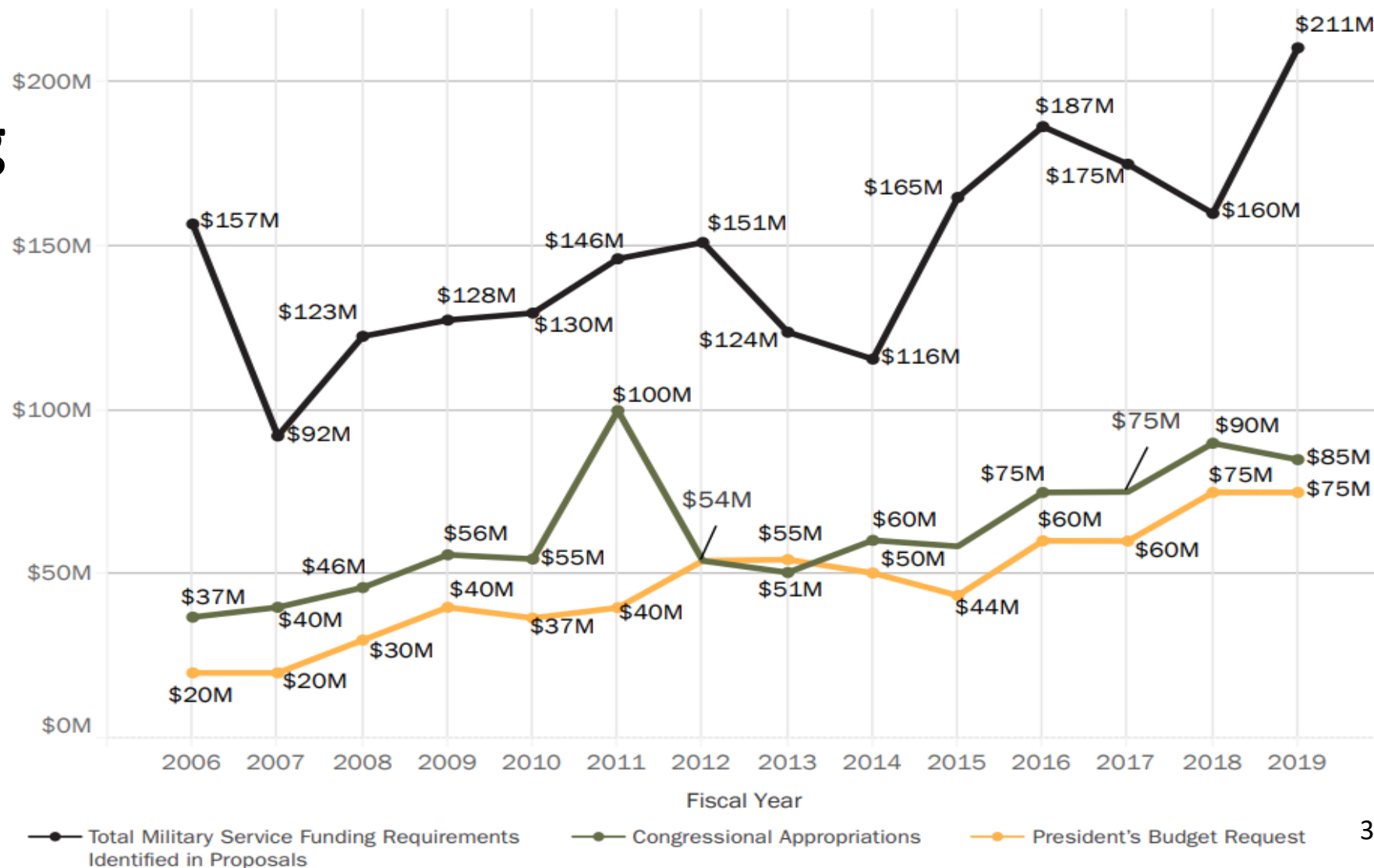


REPI

UNITED STATES DEPARTMENT OF DEFENSE READINESS AND ENVIRONMENTAL PROTECTION INTEGRATION PROGRAM

Program Funding

*\$962 million in DoD funds have been leveraged with \$854 million in partner funds under the REPI authority**



*Figures are estimates through FY19

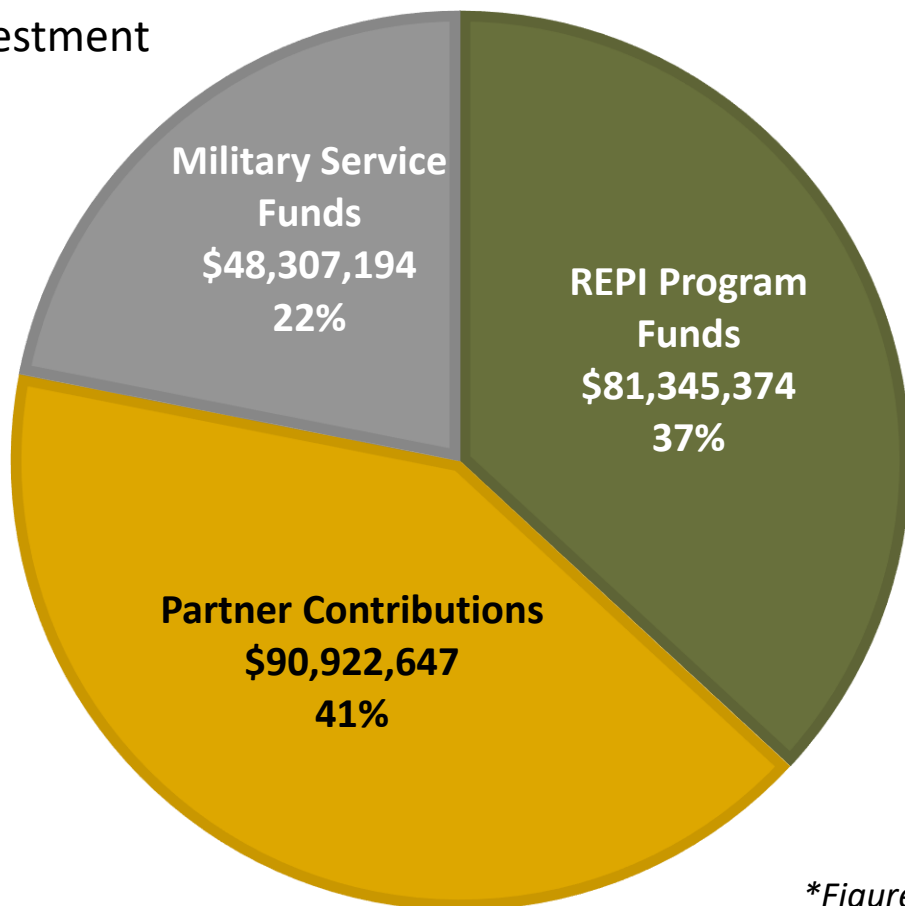


REPI UNITED STATES DEPARTMENT OF DEFENSE READINESS AND ENVIRONMENTAL PROTECTION INTEGRATION PROGRAM

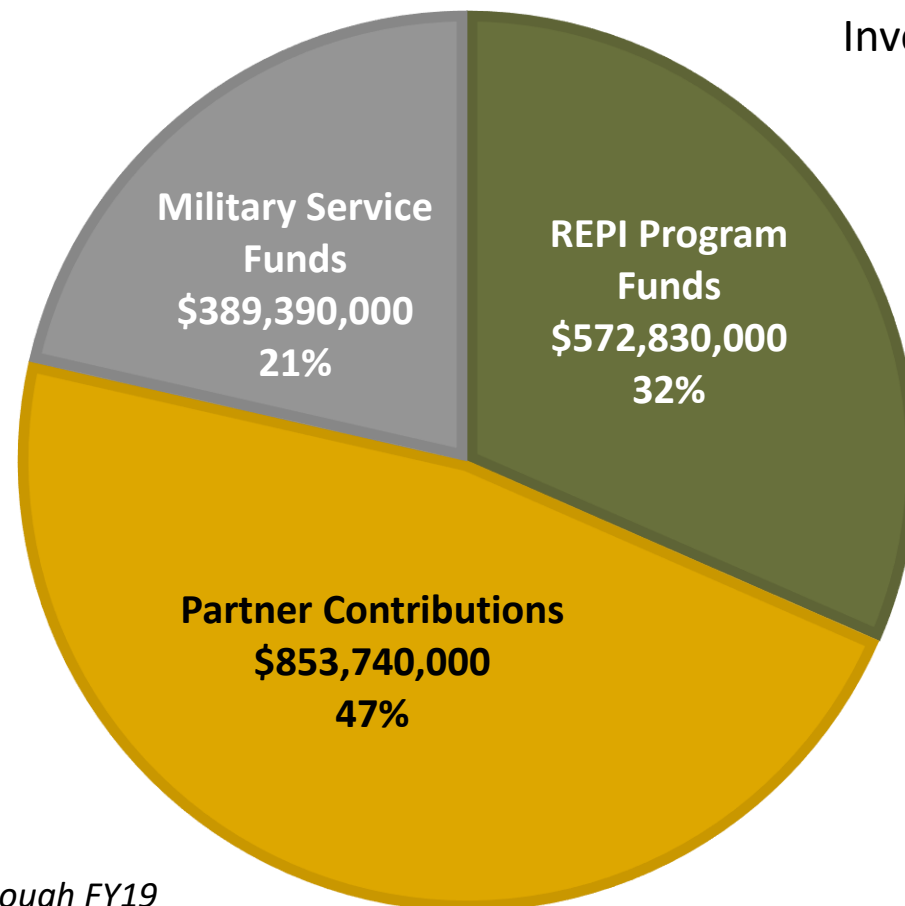
Chesapeake Bay vs. Nationwide Investments

(through FY19*)

\$220.5M Total
Investment



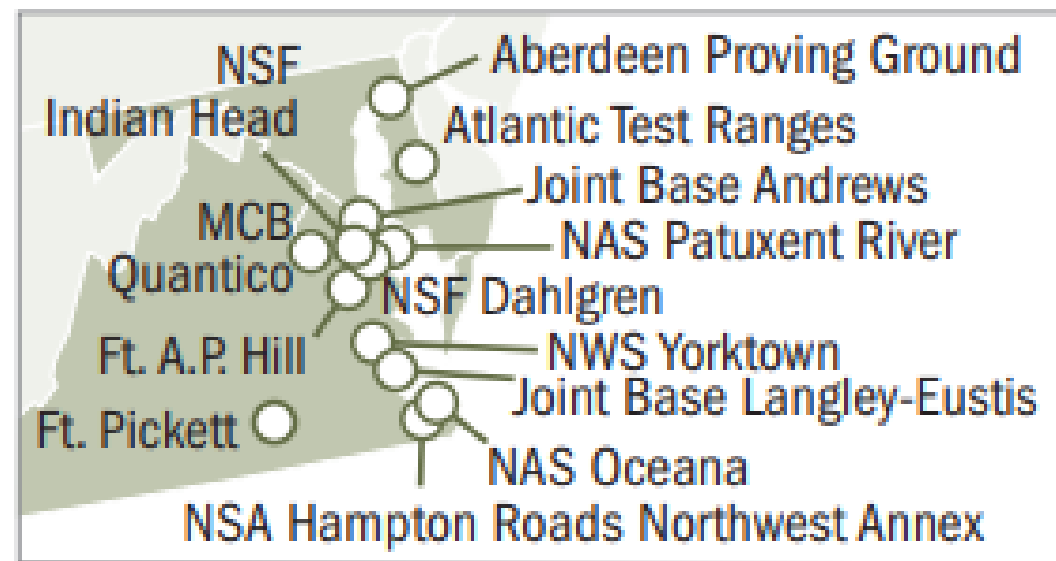
\$1.8B Total
Investment



**Figures are estimates through FY19*



Virginia and Maryland Inset:



**62,356 acres
protected within the
Chesapeake Bay
watershed**



REPI

UNITED STATES DEPARTMENT OF DEFENSE

READINESS AND ENVIRONMENTAL PROTECTION INTEGRATION PROGRAM

Partners in the Chesapeake Bay

- Albemarle-Chowan Watershed Roundtable
- Albemarle-Pamlico National Estuary Partnership
- Appalachian Trail Conservancy
- Audubon Pennsylvania
- Brunswick County
- Camden County
- Charles County
- Chesapeake Conservancy
- City of Chesapeake
- City of Hampton
- City of Virginia Beach
- Civil War Trust
- Conservancy for Charles County
- Currituck County
- Delaware Department of Agriculture
- Delaware Department of Natural Resources and Environmental Control
- Dinwiddie County
- Dorchester County
- Eastern Shore Land Conservancy
- Fauquier County
- Green Trust Alliance
- Hampton Roads Planning District Commission
- Harford County
- Harford Land Trust
- James City County
- Land Trust of Virginia
- Lower Shore Land Trust
- Lunenburg County
- Maryland Agricultural Land Preservation Foundation
- Maryland Department of Natural Resources
- Maryland Environmental Trust
- Northern Neck Land Conservancy
- Northern Virginia Conservation Trust
- Nottoway County
- National Park Service
- Patuxent Tidewater Land Trust
- Pennsylvania Department of Community and Economic Development
- Pennsylvania Department of Conservation and Natural Resources
- Pennsylvania Fish and Boat Commission
- Pennsylvania Game Commission
- Prince George County Parks and Recreation Department
- Prince William Conservation Alliance
- Roanoke River Basin Association
- Southern Maryland Resource Conservation and Development Board
- St. Mary's County
- Stafford County
- The Appalachian Trail Conservancy
- The Conservation Fund
- The Kittatinny Ridge Coalition
- The Lebanon Valley Conservancy
- The Manada Conservancy
- The Nature Conservancy
- The Trust for Public Land
- Trout Unlimited
- US Fish & Wildlife Service
- Virginia Department of Conservation and Recreation
- Virginia Department of Forestry
- Virginia Department of Game and Inland Fisheries
- Virginia Department of Historic Resources
- Virginia Outdoors Foundation
- Virginia Polytechnic Institute and State University - College of Natural Resources, Conservation Management Institute
- Ward Burton Wildlife Foundation
- Williamsburg Land Conservancy and Battlefield Trust



REPI UNITED STATES DEPARTMENT OF DEFENSE READINESS AND ENVIRONMENTAL PROTECTION INTEGRATION PROGRAM

Partnerships Authorized by 10 U.S.C. § 2684a (REPI Authority)

Must satisfy the following requirements:

- ✓ Possess an agreement between the military and eligible entity – state or local government or private conservation organization (non-profit or for-profit)
- ✓ The cost for the partner to acquire a land interest or easement to protect the land is shared between the military and partner
- ✓ Landowner enters into transaction and partnership voluntarily and willingly
- ✓ Protected land ensures compatible land use, habitat preservation, or military installation resilience



REPI UNITED STATES DEPARTMENT OF DEFENSE READINESS AND ENVIRONMENTAL PROTECTION INTEGRATION PROGRAM

Taking It Further – More Opportunities

❑ Natural resources stewardship and long-term management

10 USC § 2684a(d)(3) or 16 USC § 670c-1 support current and future cost of natural resource management, monitoring, and enforcement

❑ Promote and enhance resilience

Congress expanded 10 USC § 2684a in the FY2019 National Defense Authorization Act to include agreements that enhance or improve military installation resilience

❑ “Funds as Match” authority

Allows DoD funds to be considered a non-federal match for USDA or DOI conservation programs

❑ 2020 REPI Challenge

Up to \$15M in DoD funds for projects that preserve and enhance military installations or range capability, and maintain installation resilience (specifically coastal resilience). Open to all eligible partners at DoD installations.

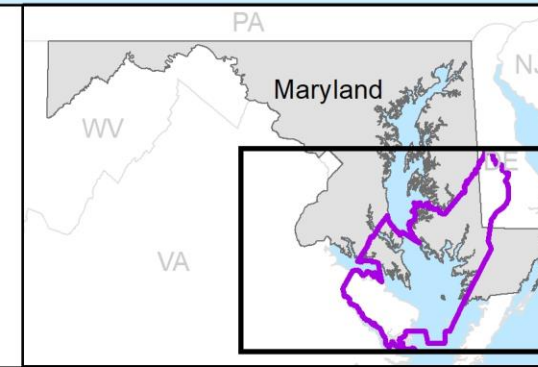
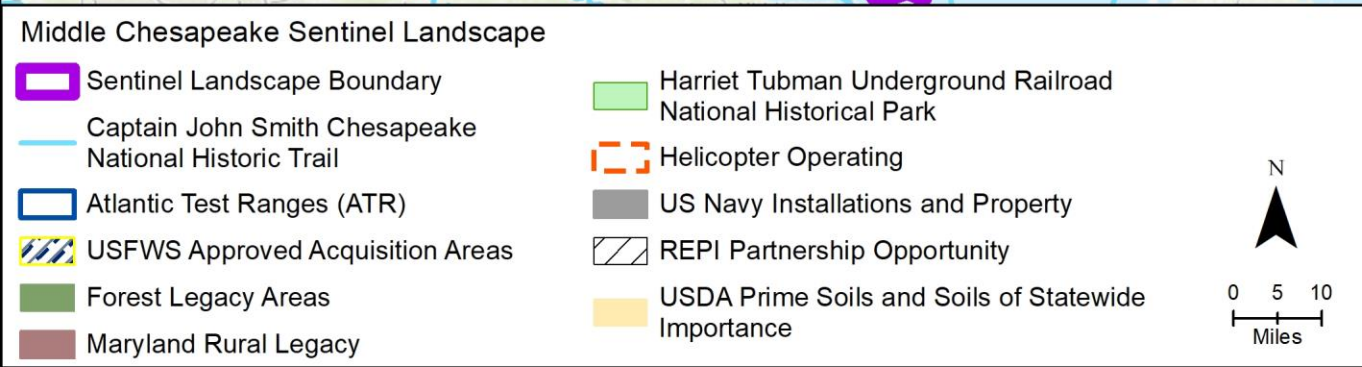
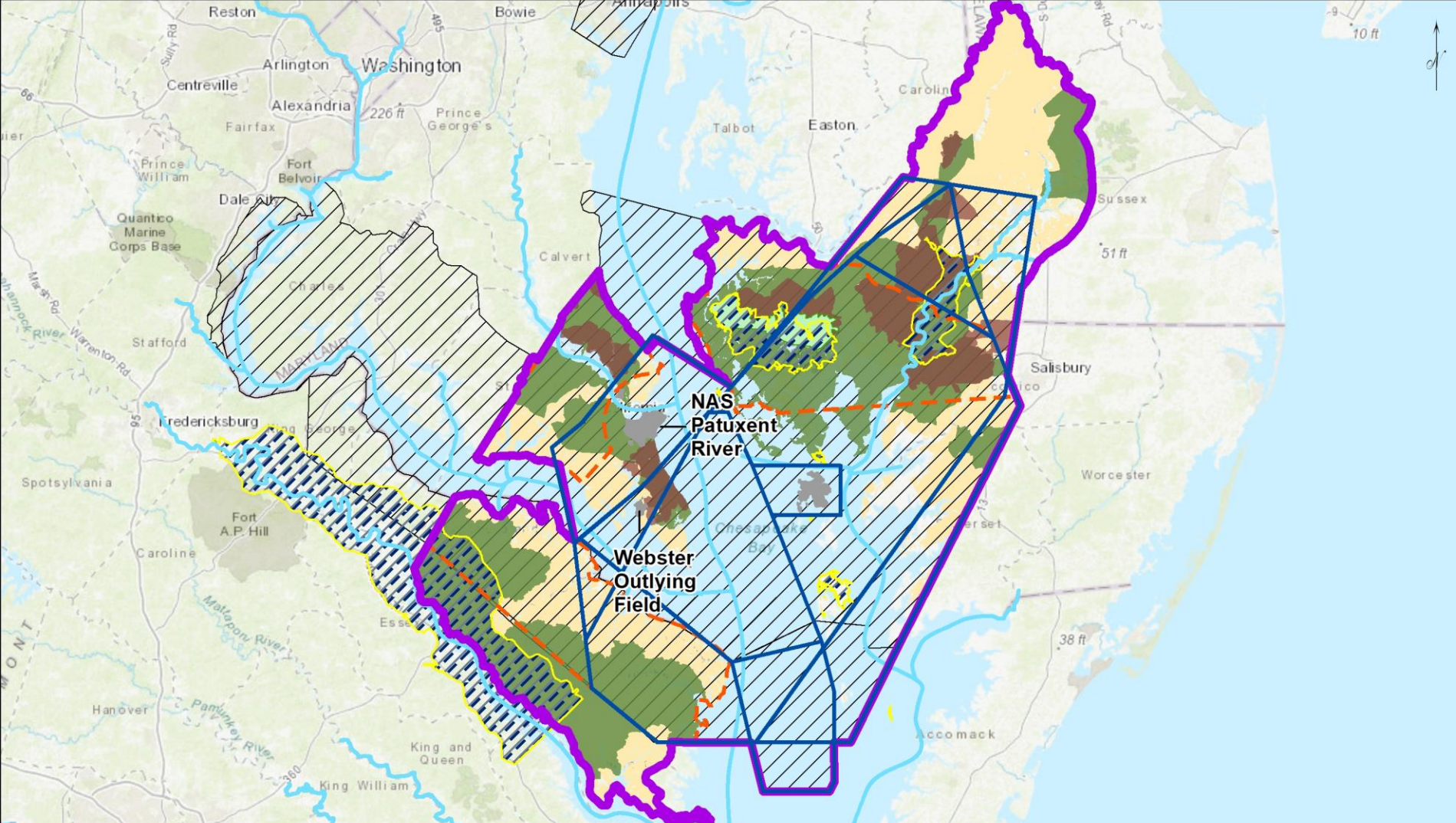


Middle Chesapeake Sentinel Landscape

□ Total Sentinel Landscape Area = 2,074,006 acres

□ Total Protected Acres = 12,686

□ Total Enrolled Acres = 130,326





REPI UNITED STATES DEPARTMENT OF DEFENSE READINESS AND ENVIRONMENTAL PROTECTION INTEGRATION PROGRAM

Questions & Discussion

For more information:

Kristin Thomasgard

REPI Program Director

Office of the Assistant Secretary of Defense (Sustainment)

kristin.j.thomasgard.civ@mail.mil

571-372-6835 (office)

www.REPI.mil

www.SentinelLandscapes.org