

# **OUR ICONIC LIVING RESOURCES**

## **BLUE CRABS & STRIPED BASS**

September 9, 2022

Chesapeake Bay Commission

David M. Goshorn, Ph.D

Senior Bay Restoration Coordinator

Maryland Department of Natural Resources

# Blue Crab Update



# Blue Crab Update

## Winter Dredge Survey Results

- Not overfishing and not depleted
- Spawning stock abundance above threshold, but below target
- Third consecutive below average recruitment

## Scientific Review & Advice

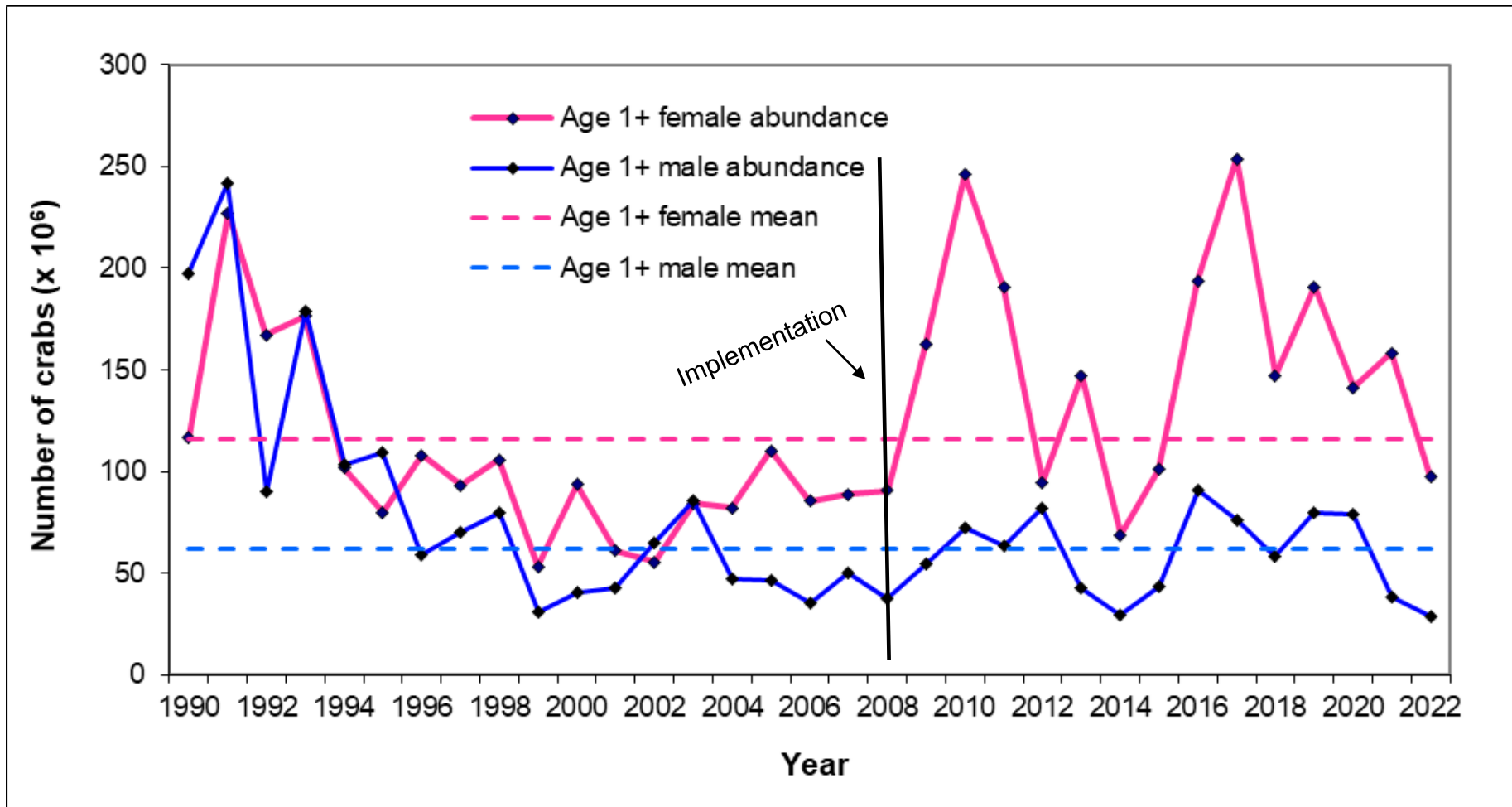
- Precautionary management measures to protect this year's cohort
- Address recruitment knowledge gaps
- Need a benchmark stock assessment

## Management Action

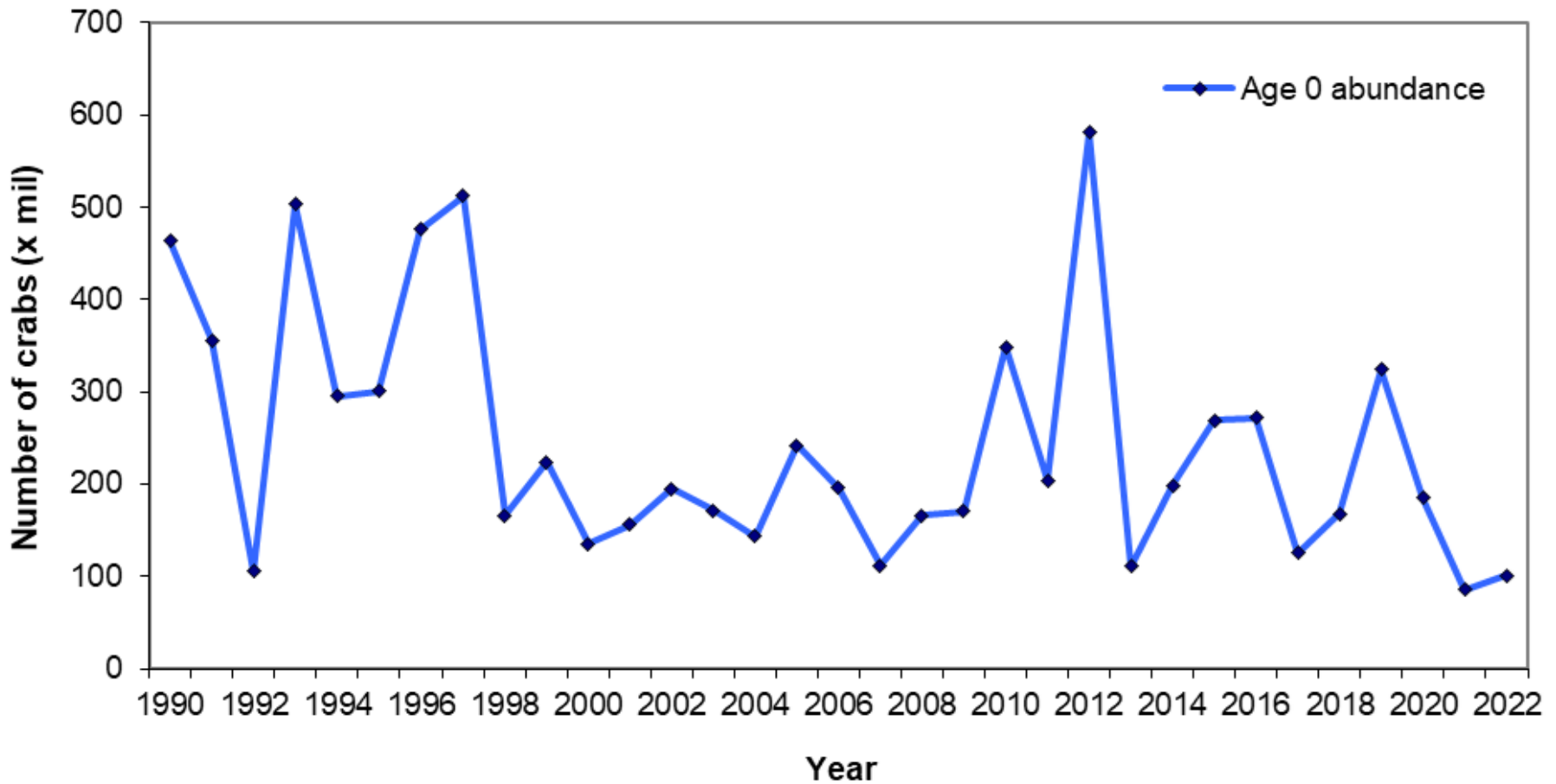
- MD, VA and PRFC tightened restrictions for crabbing season
- Host science workshop to address knowledge gaps
- Plan for a benchmark stock assessment

# Dredge Results

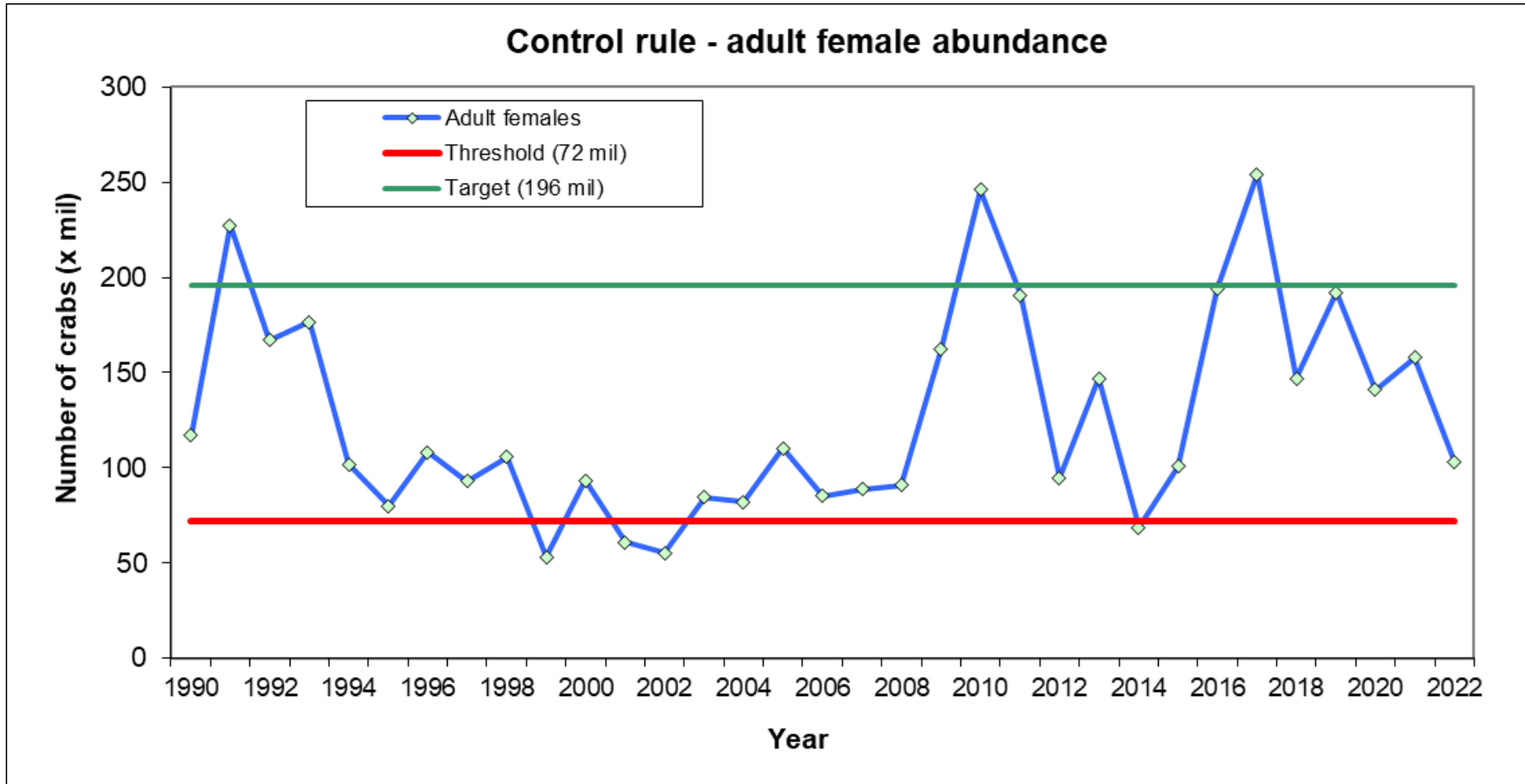
## Male and female abundance



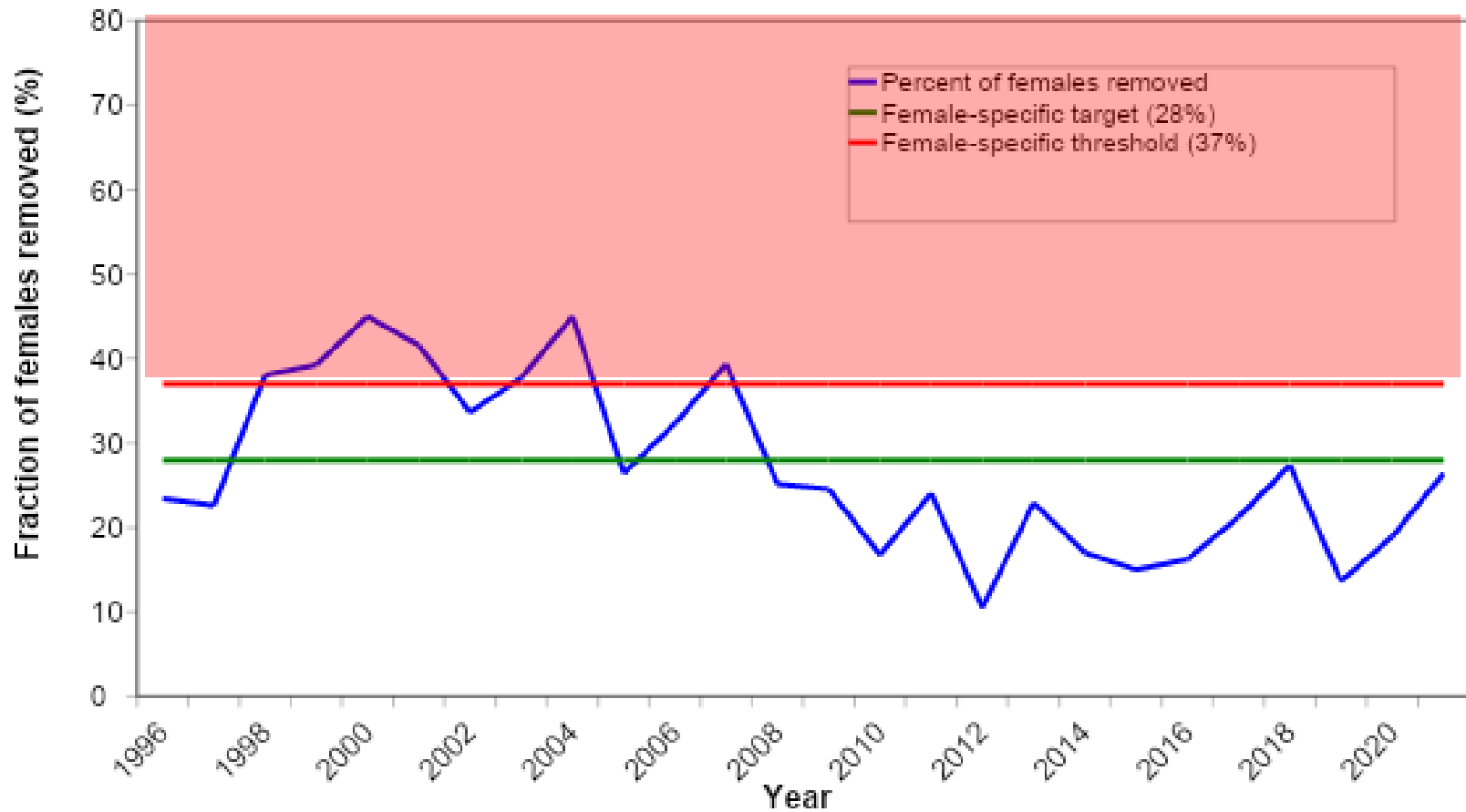
# Dredge Results Juvenile Abundance



# Blue Crab Status



# Blue Crab Status



# Blue Crab Workshop



## **Purpose:**

Bring together blue crab and other scientific experts to discuss Chesapeake Bay blue crab population dynamics and stock assessment

## **Objectives:**

1. Discuss mechanisms, data needs, and analytical methods to better understand drivers of blue crab recruitment
2. Discuss how the information developed above might inform a new stock assessment



# New Stock Assessment



## Setting the Stage for New Assessment:

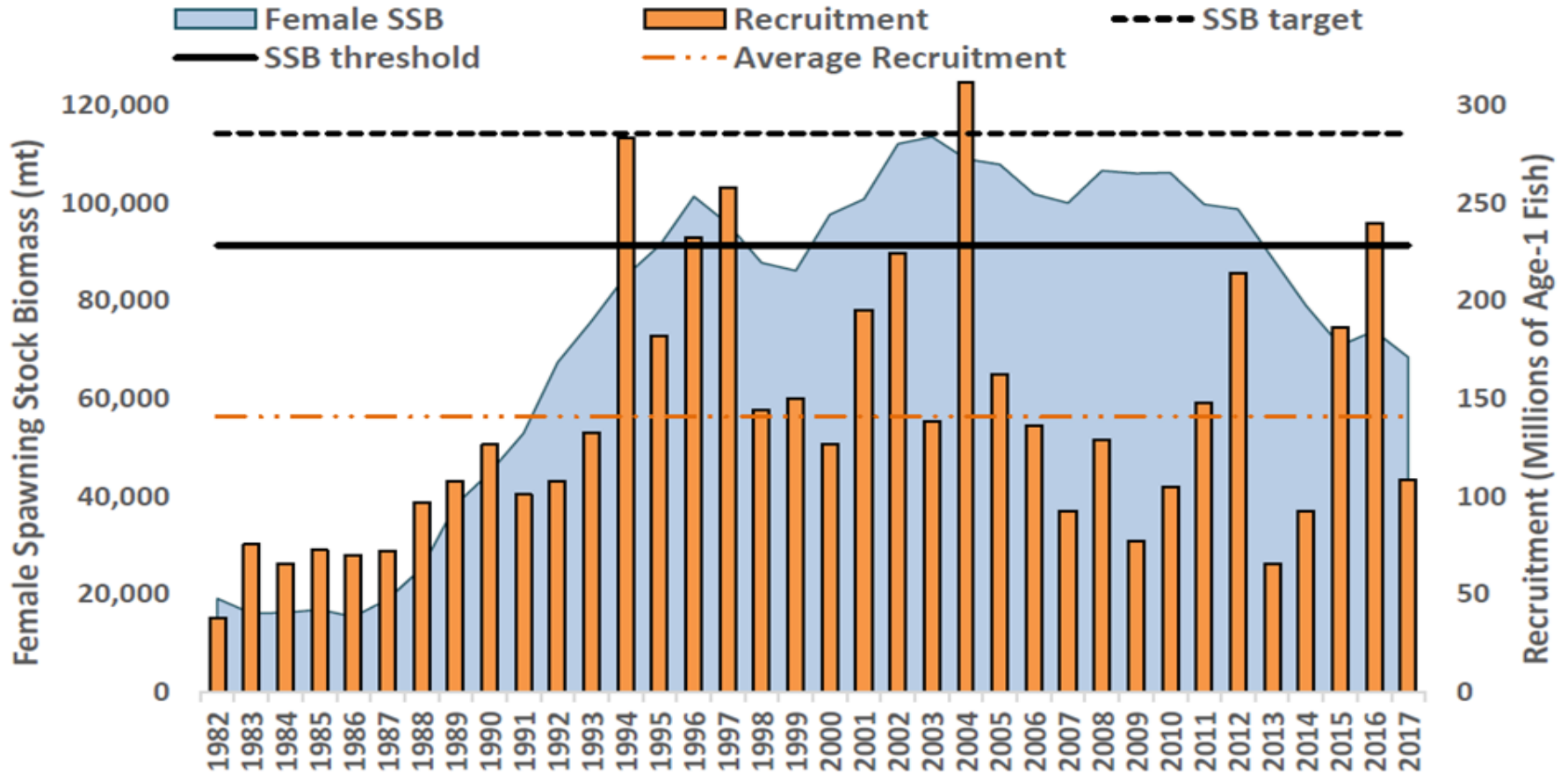
- Environmental Factors
- Habitat Availability
- Predation and Prey Availability
- Intrinsic Biological Factors
- Current Stock Assessment Model Assumptions

# Striped Bass

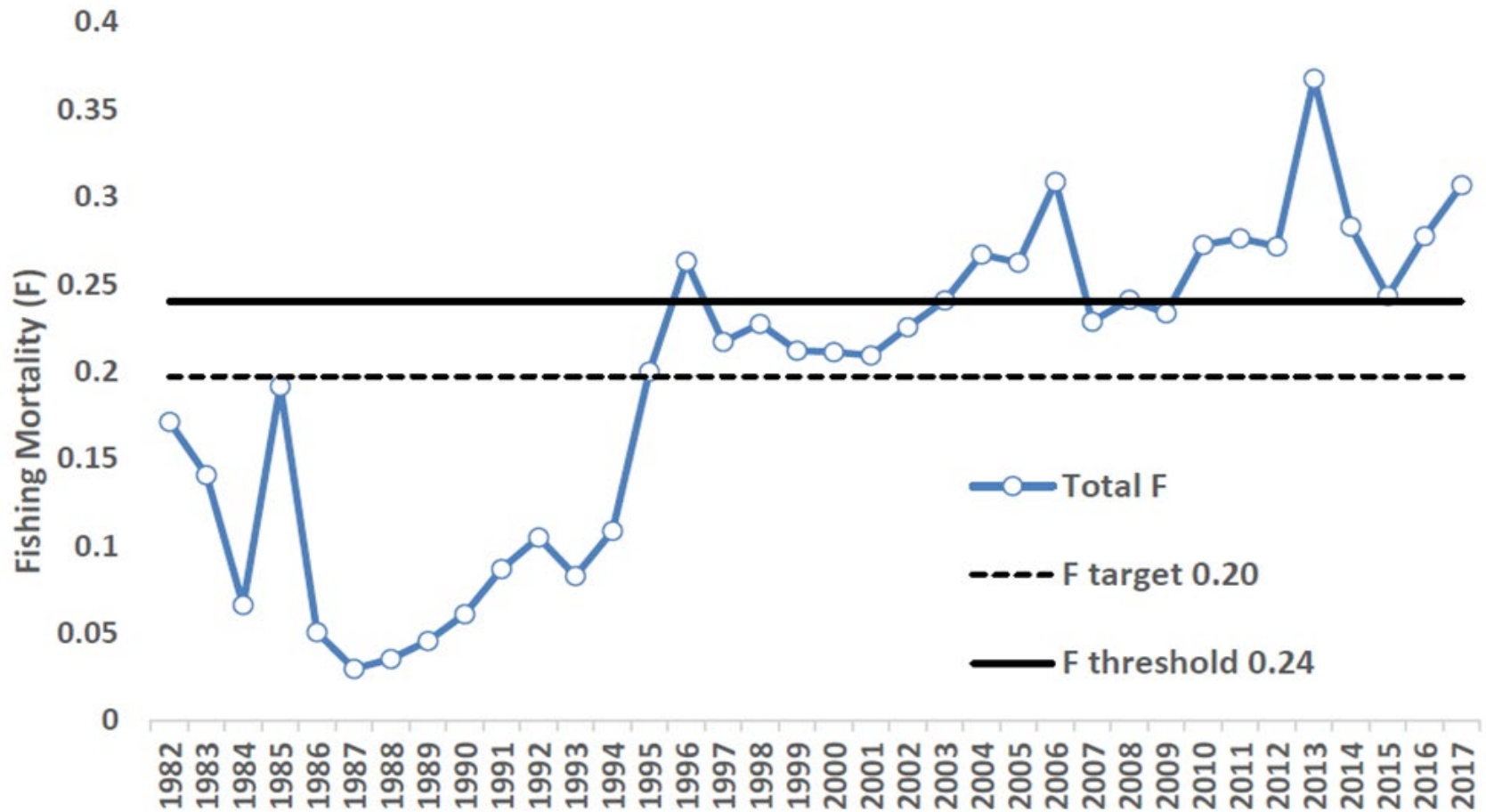
## Current Status and Next Steps



# Striped Bass Stock Status



# Striped Bass Fishing Mortality



Atlantic striped bass fishing mortality, 1982-2017. Source: ASMFC 2018 Benchmark Stock Assessment

# Striped Bass - Next Steps



**ASMFC approved Amendment 7 in May 2022 to update the striped bass management program to align with current fishery needs and priorities.**

- Establishes new requirements of the following components of the Fishery Management Plan (FMP):
  - Management triggers, conservation equivalency, additional measures to address recreational release mortality and the stock rebuilding plan
- These actions will address overfishing and initiate rebuilding in response to overfishing based on the 2022 stock assessment.
- Results expected in November 2022.