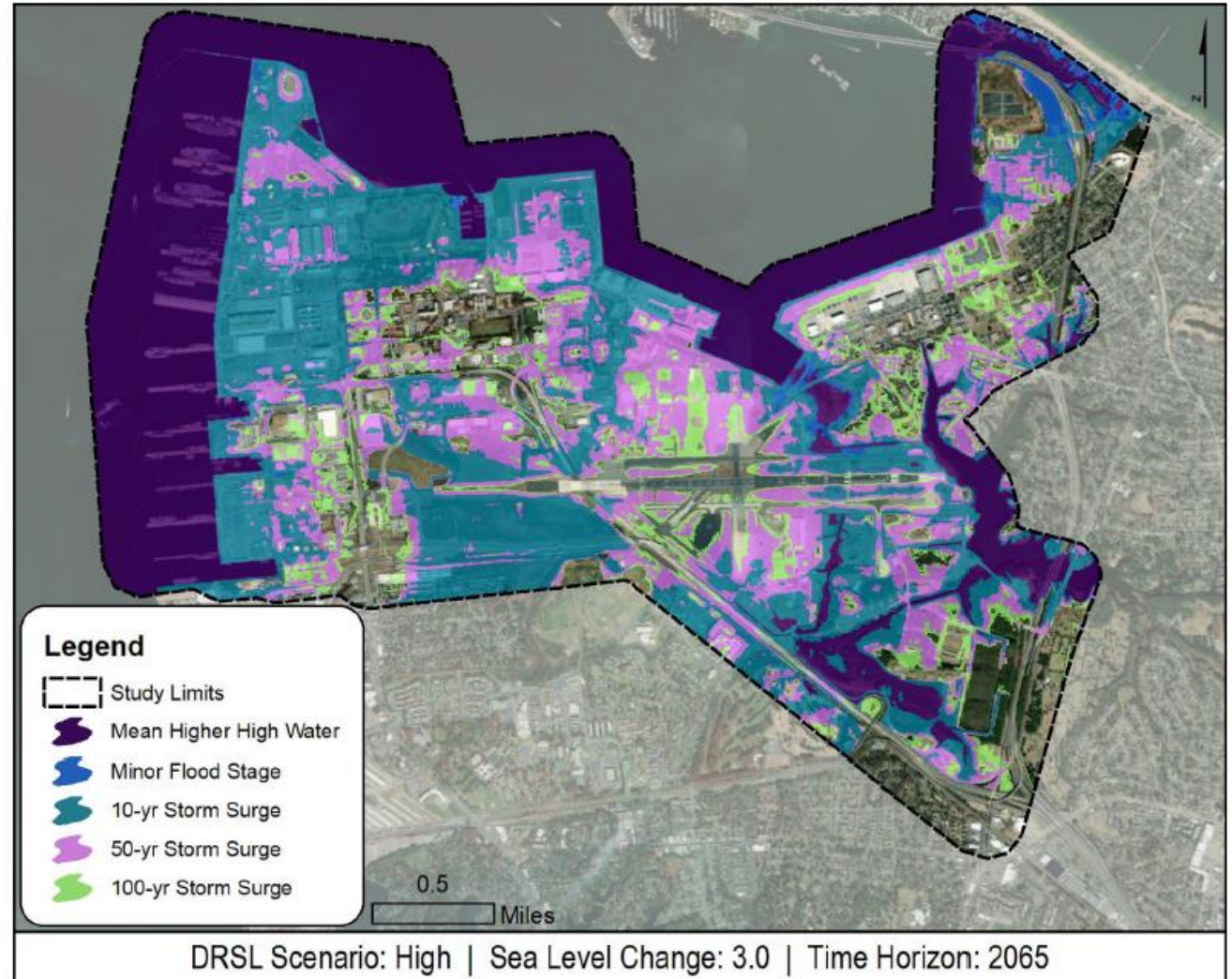


NS Norfolk Climate-Informed Flood Risk Assessment

This assessment is providing an understanding of future flood hazards, potential impacts, and courses of action to inform the long-term sustainability of Naval Station Norfolk.

- Assesses changing coastal and rainfall flood hazards (i.e. sea level change, storm surge, wave action and stormwater) through mapping and qualitative analyses.
- Provides an understanding of how the future flood conditions may impact the installation infrastructure and operations.
- Identifies potential cost-effective short- and long-term courses of action that address priority risks to the facility and maintain operations and mission.
- Builds on prior efforts of the City of Norfolk with USACE.
- Includes a feasibility assessment to replicate studies across other installations within the Mid-Atlantic Region.
- Assessment completion expected FY23.



Dewberry